



MLS 6708238 Lake Land

\$430,000

Description:

Beautiful piece of land, mix hardwoods, great hunting, wonderful fishing. Access with state and federal land.

Additional Details:

Lot Acres	21.46
Lot Dimensions	irregular
School District	318
Taxes	\$1,986
Taxes with Assessments	\$1,986
Tax Year	2024

Additional Features:

Driving Directions:

From Deer River take Hwy 46 to County Road 33



Listed By:
Wellson Group, Inc

Affinity Real Estate Inc. participates in the Regional Multiple Listing Service of Minnesota, Inc Broker Reciprocity (sm) program, allowing us to display other broker's listings on our website. All properties are subject to prior sale, change or withdrawal.



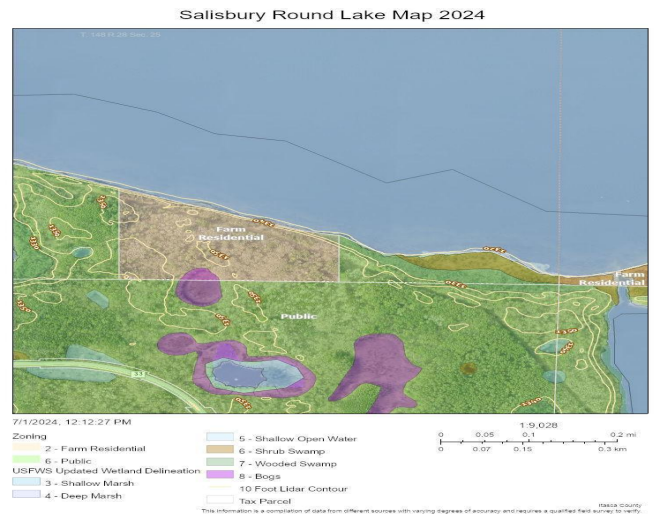
Call Affinity Real Estate

218-237-3333

info@affinityrealestate.com



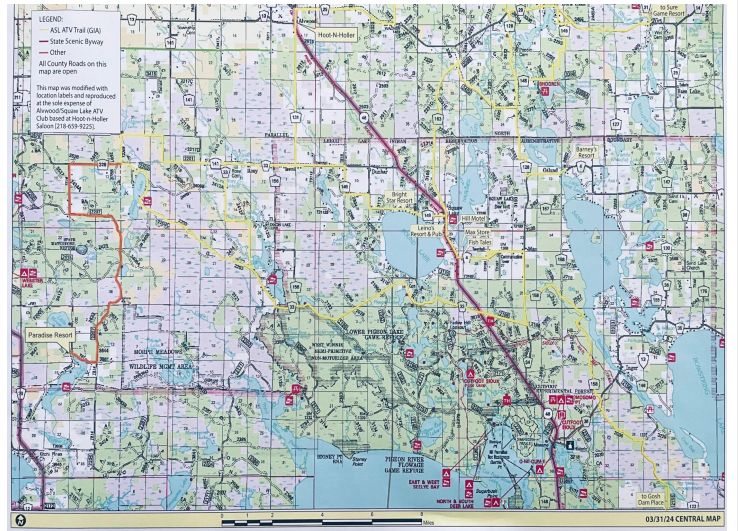
Affinity Real Estate - 600 Park Avenue South - Park Rapids MN 56470



website: www.AffinityRealEstate.com | email: info@affinityrealestate.com | office: 218-237-3333 | fax: 218-237-3377

Affinity
REAL ESTATE INC

\$430,000
MLS 6708238 Lake Land
TBD Forest Road 2196E
Squaw Lake MN 56681



website: www.AffinityRealEstate.com | email: info@affinityrealestate.com | office: 218-237-3333 | fax: 218-237-3377



\$430,000

MLS 6708238 Lake Land
TBD Forest Road 2196E
Squaw Lake MN 56681