



MLS 6708354 Land

\$57,900

2.02 Acres
Rough Grade

L44 B1 Navaho Trail
Breezy Point MN 56472

Status: Active



Description:

Ready to build? Here is a rough graded 2.01 acre lot on city tarred road, close to all Breezy Point has to offer. Look forward to everyday sunset views. 2.01 acre lot feels private due to power line 30 ft easement west and 1 acre lot to east. Seller has cleared, graded and installed the septic tank and drain-field 2023, which has been approved and inspected. Just needs to be connected to a home. Seller also has bid for Well installation, lot layout, blueprint for 2 bedroom home 1296sf w/o garage (the smallest as per city zoning). Come take a look!!

Additional Details:

Lot Acres	2.02
Lot Dimensions	217x405x217x405
School District	186
Taxes	\$500
Taxes with Assessments	\$500
Tax Year	2025

Additional Features:

Driving Directions:

"GPS" the address 7462 Navaho Trl - it's one more driveway west to Lot 44. From Breezy Point Resort gates go west on CR4 to RT on Dove St to LT on Ranchette to RT on Navaho just past 7462 on RT see for sale sign.



Listed By:
Edina Realty, Inc.

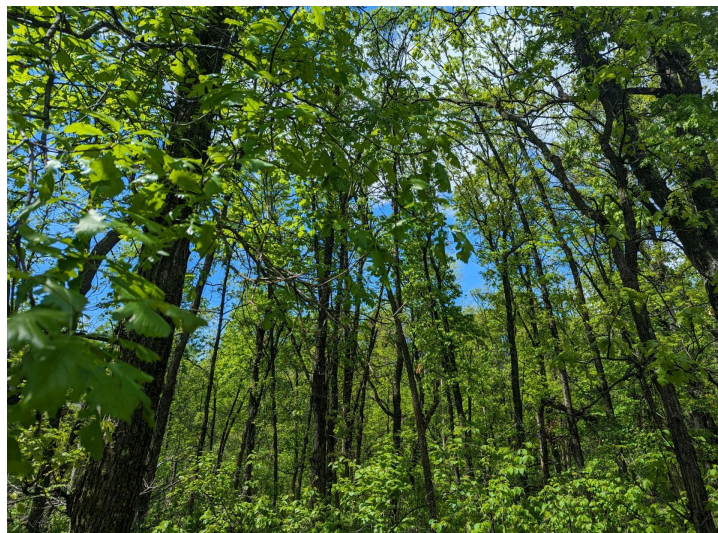
Affinity Real Estate Inc. participates in the Regional Multiple Listing Service of Minnesota, Inc Broker Reciprocity (sm) program, allowing us to display other broker's listings on our website. All properties are subject to prior sale, change or withdrawal.



Call Affinity Real Estate
218-237-3333
info@affinityrealestate.com



Affinity Real Estate - 600 Park Avenue South - Park Rapids MN 56470



website: www.AffinityRealEstate.com | email: info@affinityrealestate.com | office: 218-237-3333 | fax: 218-237-3377

Affinity
REAL ESTATE INC

\$57,900
MLS 6708354 Land
L44 B1 Navaho Trail
Breezy Point MN 56472



website: www.AffinityRealEstate.com | email: info@affinityrealestate.com | office: 218-237-3333 | fax: 218-237-3377



\$57,900
MLS 6708354 Land
L44 B1 Navaho Trail
Breezy Point MN 56472