

MLS 6708377 Land

\$165,000

1.8 Acres
Subdivided

2020 Nelson Lake Road
Pillager MN 56473

Status: Coming Soon

Description:

Located with Nelson Lake views and conveniently close to both Brainerd and Pillager off Highway 210. This 1.8-acre property features a expansive brand-new TO BE BUILT 40x72 , stick framed with 16-foot sidewalls, 2-foot overhangs, and two 12'x14' garage doors on the gable ends, plus a standard service door for easy access. This pole shed will be built with a concrete floor, and walls and ceilings will be UNFINISHED. Includes 200 Amp service onsite. Whether you're looking for the perfect spot to store your boats, RVs, snowmobiles, or equipment, or need a base for your business or hobbies. The level lot and massive pole shed will be ready for your storage needs.

Additional Details:

Lot Acres	1.8
Lot Dimensions	237x378
School District	116
Taxes	\$88
Taxes with Assessments	\$88
Tax Year	2025

Additional Features:

Driving Directions:

Turn onto (MN-210). Go for 9.4 mi., Turn right onto Upper Sylvan Rd SW. Go for 0.3 mi., Turn right onto Nelson Lake Rd SW. Go for 0.2 mi. 2020 Nelson Lake Rd SW Pillager, Minnesota 56473-2537



Listed By:
RE/MAX Results - Nisswa

Affinity Real Estate Inc. participates in the Regional Multiple Listing Service of Minnesota, Inc Broker Reciprocity (sm) program, allowing us to display other broker's listings on our website. All properties are subject to prior sale, change or withdrawal.



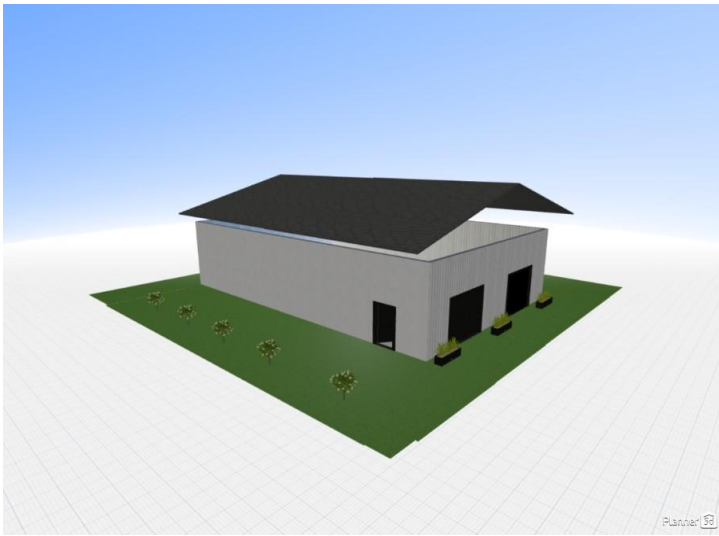
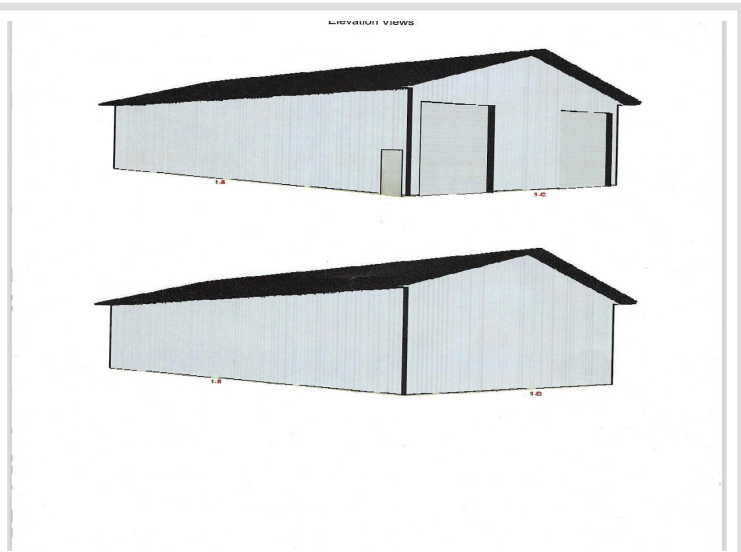
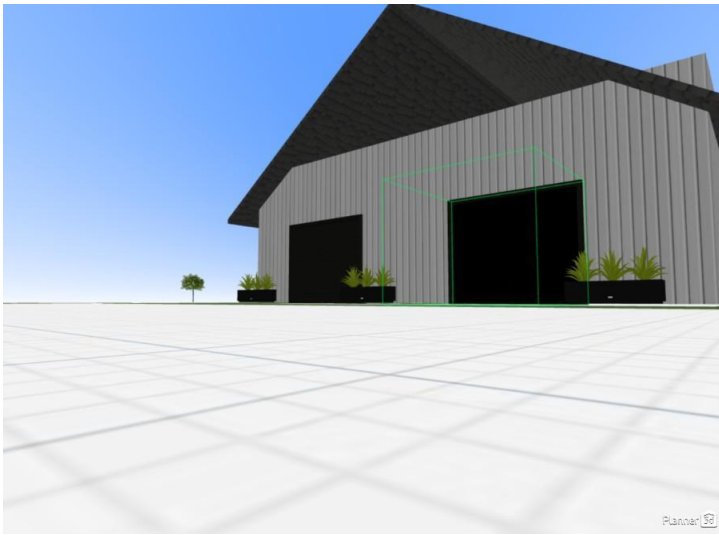
Call Affinity Real Estate

218-237-3333

info@affinityrealestate.com



Affinity Real Estate - 600 Park Avenue South - Park Rapids MN 56470



website: www.AffinityRealEstate.com | email: info@affinityrealestate.com | office: 218-237-3333 | fax:218-237-3377



\$165,000
MLS 6708377 Land
2020 Nelson Lake Road
Pillager MN 56473