



MLS 6708654 Commercial

\$1,999,000

1001 Naylor Drive
Bemidji MN 56601

Status: Active

Description:

Updated & well-maintained building. 20,000 sq ft with a mezzanine of 500 sq ft. Built in 2001. Current features include: front offices, conference room, lunchroom, large production area for packaging, high ceilings in back with a loading dock and 4 overhead doors for shipping/receiving. Located in Bemidji's Industrial Park on a 3+ acre lot. 37 designated paved parking spots with several electrical plugins & additional parking in the back. The 2 parcels are zoned I-1 (light industrial). Convenient access to major highways (Hwy 71 and Hwy 2) and also close to Fed Ex and UPS. Potential uses include: Manufacturing, assembly & packaging. Distribution/wholesale center. Climate controlled storage facility. Service Center, Professional sales offices, marketing call center. Multi-tenant space. Room for expansion. Versatile commercial property would be attractive to a range of businesses & investors. See feature sheet for additional information.

Additional Details:

Year Built	2001
Lot Acres	3.18
Lot Dimensions	443x382x270x308
School District	31
Taxes	\$19,438
Taxes with Assessments	\$19,438
Tax Year	2025

Additional Features:

Fuel: Natural Gas **Heat:** Boiler, Radiant Floor

Driving Directions:

South on Washington Ave, left on Mahnomen Dr (into the Industrial Park), left on Industrial Park Dr, then an immediate right on Mahnomen Dr, right on Naylor Dr.



Listed By:
Century 21 Dickinson

Affinity Real Estate Inc. participates in the Regional Multiple Listing Service of Minnesota, Inc Broker Reciprocity (sm) program, allowing us to display other broker's listings on our website. All properties are subject to prior sale, change or withdrawal.



Call Affinity Real Estate

218-237-3333

info@affinityrealestate.com



Affinity Real Estate - 600 Park Avenue South - Park Rapids MN 56470



website: www.AffinityRealEstate.com | email: info@affinityrealestate.com | office: 218-237-3333 | fax: 218-237-3377

Affinity
REAL ESTATE INC

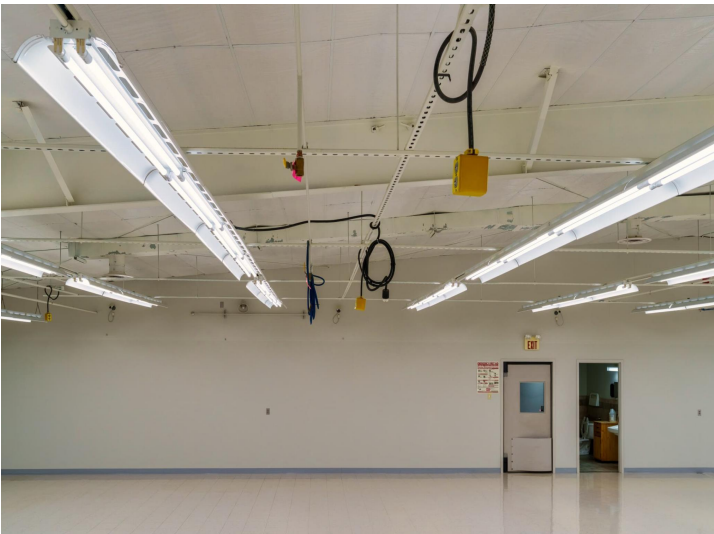
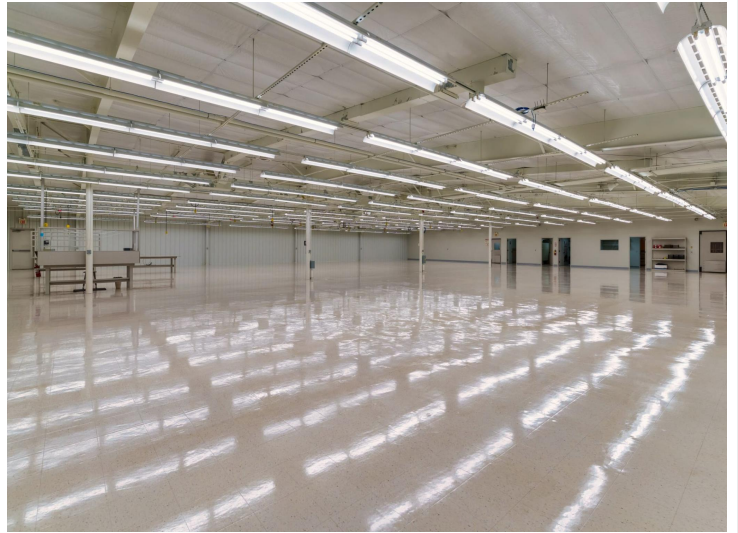
\$1,999,000
MLS 6708654 Commercial
1001 Naylor Drive
Bemidji MN 56601



website: www.AffinityRealEstate.com | email: info@affinityrealestate.com | office: 218-237-3333 | fax: 218-237-3377

Affinity
REAL ESTATE INC

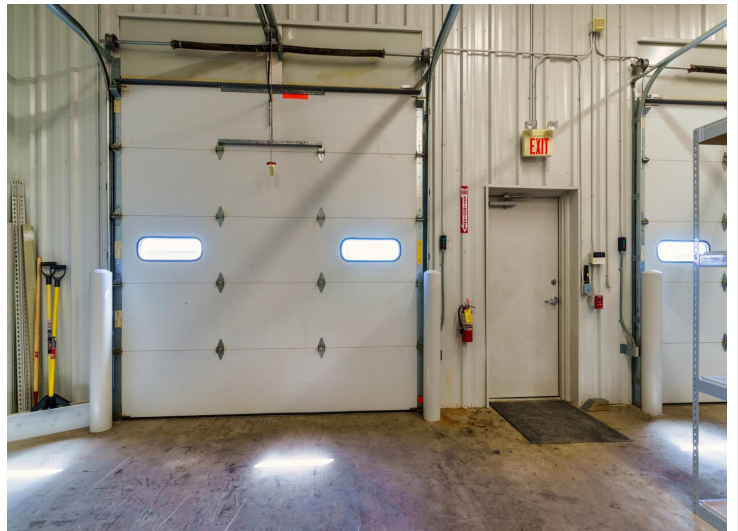
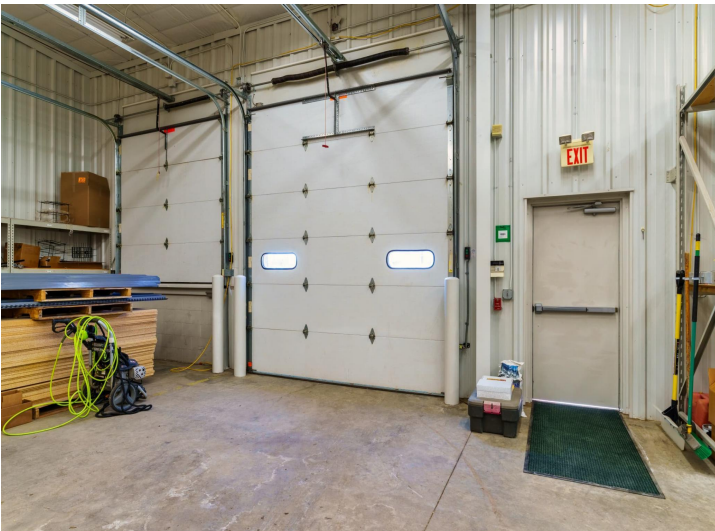
\$1,999,000
MLS 6708654 Commercial
1001 Naylor Drive
Bemidji MN 56601



website: www.AffinityRealEstate.com | email: info@affinityrealestate.com | office: 218-237-3333 | fax: 218-237-3377



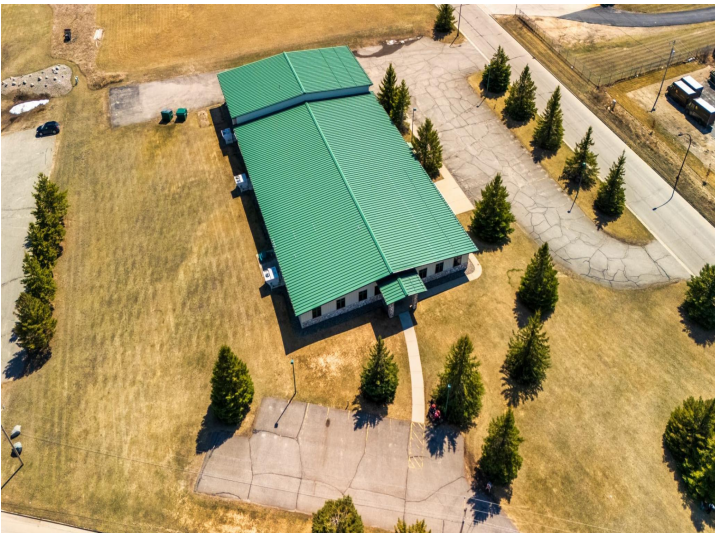
\$1,999,000
 MLS 6708654 Commercial
 1001 Naylor Drive
 Bemidji MN 56601



website: www.AffinityRealEstate.com | email: info@affinityrealestate.com | office: 218-237-3333 | fax: 218-237-3377

Affinity
REAL ESTATE INC

\$1,999,000
MLS 6708654 Commercial
1001 Naylor Drive
Bemidji MN 56601



website: www.AffinityRealEstate.com | email: info@affinityrealestate.com | office: 218-237-3333 | fax: 218-237-3377



\$1,999,000
 MLS 6708654 Commercial
 1001 Naylor Drive
 Bemidji MN 56601