



MLS 6708665 Residential

\$169,995

1,422 sq ft
3 bedrooms
2 baths

705 Woodland Avenue
Park Rapids MN 56470

Status: Closed

Description:

Park Rapids city home with so much to offer. The main level has a thoughtful floor plan with 3 bedrooms, a full bath, living room, kitchen, dining and easy access to both the front patio (10x18) or the rear deck (12x24). The basement is full-sized, partially finished and provides an ideal opportunity to expand your living space however you see fit. Both levels have 1,022 sq ft each. The furnace (nat gas), central air, water heater and electrical panel (200 amp) were new installs approximately 5 years ago. Seamless gutters and downs were also added. Nice curb appeal with a hipped roof, concrete driveway and a fabulous yard! Convenient in-town location walking distance to the Park Rapids schools. Whether you're looking for a personal residence, a flip opportunity, or a rent-ready investment, this property fits the bill!

Additional Details:

Year Built	1965
Lot Acres	0.31
Lot Dimensions	90 x 150
Garage Stalls	2
School District	309
Taxes	\$1,955
Taxes with Assessments	\$2,176
Tax Year	2025

Additional Features:

Basement: Block, Daylight/Lookout Windows, Full, Partially Finished **Fuel:** Natural Gas **Garage:** 2 **Heat:** Forced Air **Sewer:** City Sewer/Connected
Water: City Water/Connected **Air Conditioning:** Central Air

Driving Directions:

From Main Ave/Hwy 34: Go North on Main Ave to a left on Monico Lane. Follow to a right on Woodland Ave to the second home on left.



Listed By:
Affinity Real Estate Inc.

Affinity Real Estate Inc. participates in the Regional Multiple Listing Service of Minnesota, Inc Broker Reciprocity (sm) program, allowing us to display other broker's listings on our website. All properties are subject to prior sale, change or withdrawal.



Call Affinity Real Estate

218-237-3333

info@affinityrealestate.com



Affinity Real Estate - 600 Park Avenue South - Park Rapids MN 56470



website: www.AffinityRealEstate.com | email: info@affinityrealestate.com | office: 218-237-3333 | fax: 218-237-3377



\$169,995
 MLS 6708665 Residential
 705 Woodland Avenue
 Park Rapids MN 56470



website: www.AffinityRealEstate.com | email: info@affinityrealestate.com | office: 218-237-3333 | fax: 218-237-3377

Affinity
REAL ESTATE INC

\$169,995
MLS 6708665 Residential
705 Woodland Avenue
Park Rapids MN 56470



Main Floor BDRM 3



Main Floor Full Bath



Secondary Side Entry



Partially Finished BSMT



Partially Finished BSMT

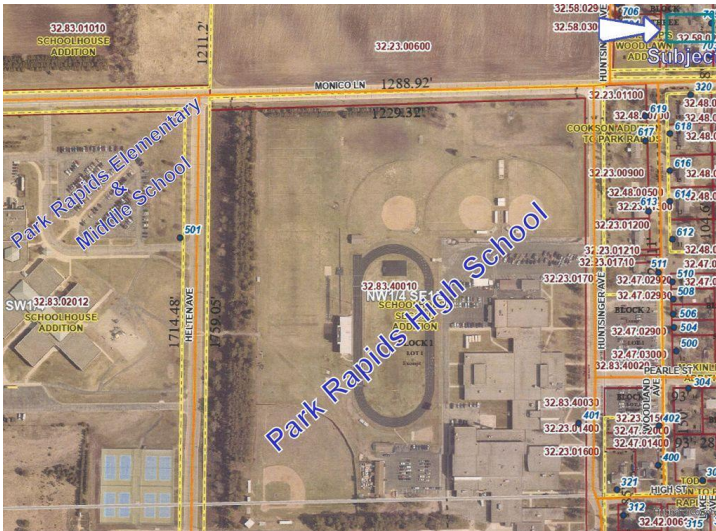


Partially Finished BSMT

website: www.AffinityRealEstate.com | email: info@affinityrealestate.com | office: 218-237-3333 | fax: 218-237-3377

Affinity
REAL ESTATE INC

\$169,995
MLS 6708665 Residential
705 Woodland Avenue
Park Rapids MN 56470



website: www.AffinityRealEstate.com | email: info@affinityrealestate.com | office: 218-237-3333 | fax: 218-237-3377



\$169,995
 MLS 6708665 Residential
 705 Woodland Avenue
 Park Rapids MN 56470