



MLS 6709089 Residential

\$324,900

2,240 sq ft
3 bedrooms
2 baths

1138 Pleasant Court
Bemidji MN 56601

Status: Active

Description:

This may be just the home for you! 3 bedrooms, 2 full baths, open floor plan, new kitchen with granite countertops and center island, lower family room and office, attached 2 stall garage all on a level lot with a big back yard and compliant septic. This home has been thoroughly updated, new flooring, new siding, new well, new lighting, doors, bathrooms. This owner has improved the property also, adding new gutters and 2 new front windows. Natural gas heating and central air conditioning add to your comfort. Move-in ready!

Additional Details:

Year Built	1980
Lot Acres	0.56
Lot Dimensions	113x188x130x188
Garage Stalls	2
School District	31
Taxes	\$98
Taxes with Assessments	\$98
Tax Year	2025

Additional Features:

Fuel: Electric, Natural Gas **Heat:** Baseboard, Forced Air

Driving Directions:

From the south end of Bemidji, take 197 south to Rako ST. Right on Rako. Rako turns into Lakeview Dr. Continue to 18th ST SW. Right on 18th. 18th turns into Yellowhead, follow to Pleasant CT SW. Left on Pleasant. Or 5th ST to Jefferson to Wee Gwaus to Yellowhead to Pleasant



Listed By:
Lake-N-Woods Realty

Affinity Real Estate Inc. participates in the Regional Multiple Listing Service of Minnesota, Inc Broker Reciprocity (sm) program, allowing us to display other broker's listings on our website. All properties are subject to prior sale, change or withdrawal.



Call Affinity Real Estate

218-237-3333

info@affinityrealestate.com



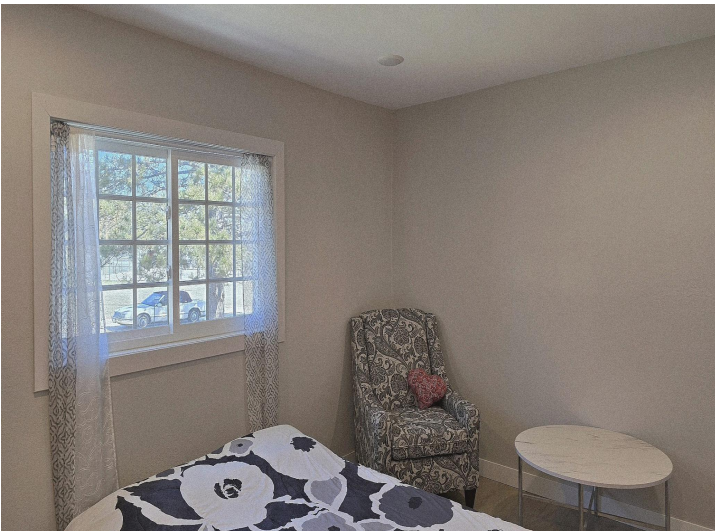
Affinity Real Estate - 600 Park Avenue South - Park Rapids MN 56470



website: www.AffinityRealEstate.com | email: info@affinityrealestate.com | office: 218-237-3333 | fax: 218-237-3377



\$324,900
 MLS 6709089 Residential
 1138 Pleasant Court
 Bemidji MN 56601



website: www.AffinityRealEstate.com | email: info@affinityrealestate.com | office: 218-237-3333 | fax: 218-237-3377



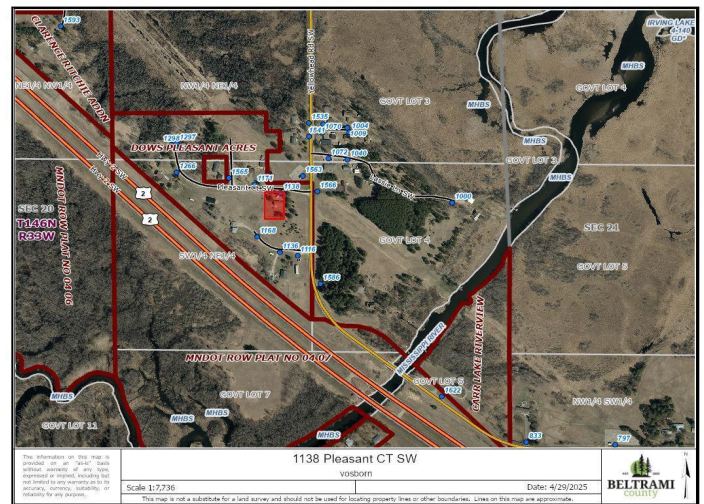
\$324,900
 MLS 6709089 Residential
 1138 Pleasant Court
 Bemidji MN 56601



website: www.AffinityRealEstate.com | email: info@affinityrealestate.com | office: 218-237-3333 | fax: 218-237-3377

Affinity
REAL ESTATE INC

\$324,900
MLS 6709089 Residential
1138 Pleasant Court
Bemidji MN 56601



website: www.AffinityRealEstate.com | email: info@affinityrealestate.com | office: 218-237-3333 | fax: 218-237-3377

Affinity
REAL ESTATE INC

\$324,900
MLS 6709089 Residential
1138 Pleasant Court
Bemidji MN 56601



website: www.AffinityRealEstate.com | email: info@affinityrealestate.com | office: 218-237-3333 | fax: 218-237-3377



\$324,900
MLS 6709089 Residential
1138 Pleasant Court
Bemidji MN 56601