



MLS 6709499 Land

\$240,000

60 Acres
Raw Land

xxx County Road 1
Eagle Bend MN 56446

Status: Coming Soon

Description:

A Hunter's Dream Come True! Experience world-class deer, turkey, waterfowl, and coyote hunting—all on one exceptional property. This rare piece of land offers a perfect blend of farm fields, open pasture, and mature woods, creating an ideal environment for wildlife. Two enclosed deer blinds are already in place and ready for the season, so you can hit the ground running. Whether you're a seasoned sportsman or looking for your private hunting retreat, this property delivers. Don't miss your chance to own one of the most incredible hunting properties on the market today.

Additional Details:

Lot Acres	60
Lot Dimensions	Irregular
School District	2759
Taxes	\$1,506
Taxes with Assessments	\$1,506
Tax Year	2025

Additional Features:

Driving Directions:

From Rose City follow County Road 14 east to County Road 1 (north) to sign on left.



Listed By:
Premier Real Estate Services

Affinity Real Estate Inc. participates in the Regional Multiple Listing Service of Minnesota, Inc Broker Reciprocity (sm) program, allowing us to display other broker's listings on our website. All properties are subject to prior sale, change or withdrawal.



Call Affinity Real Estate

218-237-3333

info@affinityrealestate.com



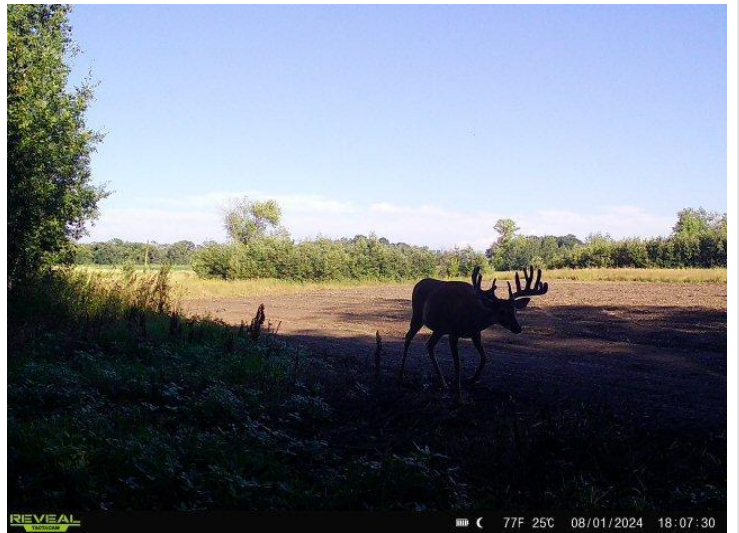
Affinity Real Estate - 600 Park Avenue South - Park Rapids MN 56470



website: www.AffinityRealEstate.com | email: info@affinityrealestate.com | office: 218-237-3333 | fax: 218-237-3377



\$240,000
 MLS 6709499 Land
 xxx County Road 1
 Eagle Bend MN 56446



website: www.AffinityRealEstate.com | email: info@affinityrealestate.com | office: 218-237-3333 | fax: 218-237-3377



\$240,000
 MLS 6709499 Land
 xxx County Road 1
 Eagle Bend MN 56446



website: www.AffinityRealEstate.com | email: info@affinityrealestate.com | office: 218-237-3333 | fax:218-237-3377



\$240,000
MLS 6709499 Land
xxx County Road 1
Eagle Bend MN 56446