



MLS 6709535 Residential

\$275,000

1,864 sq ft
3 bedrooms
2 baths

1815 Carr Lake Road
Bemidji MN 56601

Status: Active

Description:

Spacious home sits on an elevated, 1.42 acre, lot with views overlooking Lake Marquette! This street bends and turns off to curve around the lake just before the street becomes Jefferson. Quiet and quaint neighborhood. If you need lots of storage, this home has you covered: ATVs, Snowmobiles, Boats, Bikes and more! The three car garage has a one car section set up like a neighborhood bar... It is heated, insulated and sheet rocked. Just a gem. Lake Irvine access is about 1.5 miles away. Home is close to the high school...which is convenient when people are very involved there! Home is nestled among many beautiful trees that are soon to bloom! Vaulted living room/dining room/kitchen ceiling is finished with locally milled pine which adds warmth and charm. Newer flooring in this area as well. Cooking is a breeze with the center island and lots of counter space! Because the yard is so big and on a corner, there is a sense of privacy.

Lower level has a walk out. Could be a private entrance for a roommate. Schedule your showing soon!

Additional Details:

Year Built	1970
Lot Acres	1.42
Lot Dimensions	301x170
Garage Stalls	5
School District	31
Taxes	\$2,254
Taxes with Assessments	\$2,254
Tax Year	2025

Additional Features:

Basement: Finished **Fuel:** Propane **Garage:** 5 **Heat:** Forced Air **Sewer:** Private Sewer **Water:** Well **Air Conditioning:** Central Air

Driving Directions:

Carr Lake Road where it curves just before it becomes Jefferson.



Listed By:
Headwaters Realty Services LLC

Affinity Real Estate Inc. participates in the Regional Multiple Listing Service of Minnesota, Inc Broker Reciprocity (sm) program, allowing us to display other broker's listings on our website. All properties are subject to prior sale, change or withdrawal.



Call Affinity Real Estate

218-237-3333

info@affinityrealestate.com



Affinity Real Estate - 600 Park Avenue South - Park Rapids MN 56470



website: www.AffinityRealEstate.com | email: info@affinityrealestate.com | office: 218-237-3333 | fax: 218-237-3377

Affinity
REAL ESTATE INC

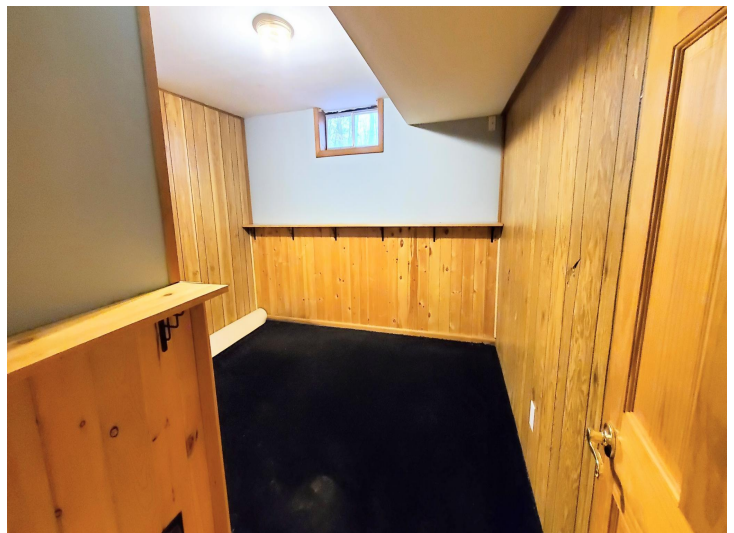
\$275,000
MLS 6709535 Residential
1815 Carr Lake Road
Bemidji MN 56601



website: www.AffinityRealEstate.com | email: info@affinityrealestate.com | office: 218-237-3333 | fax: 218-237-3377

Affinity
REAL ESTATE INC

\$275,000
MLS 6709535 Residential
1815 Carr Lake Road
Bemidji MN 56601



website: www.AffinityRealEstate.com | email: info@affinityrealestate.com | office: 218-237-3333 | fax: 218-237-3377



\$275,000
 MLS 6709535 Residential
 1815 Carr Lake Road
 Bemidji MN 56601



website: www.AffinityRealEstate.com | email: info@affinityrealestate.com | office: 218-237-3333 | fax: 218-237-3377

Affinity
REAL ESTATE INC

\$275,000
MLS 6709535 Residential
1815 Carr Lake Road
Bemidji MN 56601



website: www.AffinityRealEstate.com | email: info@affinityrealestate.com | office: 218-237-3333 | fax: 218-237-3377

Affinity
REAL ESTATE INC

\$275,000
MLS 6709535 Residential
1815 Carr Lake Road
Bemidji MN 56601



website: www.AffinityRealEstate.com | email: info@affinityrealestate.com | office: 218-237-3333 | fax: 218-237-3377



\$275,000
MLS 6709535 Residential
1815 Carr Lake Road
Bemidji MN 56601

website: www.AffinityRealEstate.com | email: info@affinityrealestate.com | office: 218-237-3333 | fax:218-237-3377



\$275,000

MLS 6709535 Residential
1815 Carr Lake Road
Bemidji MN 56601