



MLS 6709596 Lake Land

**\$266,000**

**Description:**

Welcome to this amazing river front property with endless opportunities! Property has over 1/2 mile of shoreline on the Mississippi River!! Tax forfeited land on all sides and the entire 2 mile drive into the property. Over 1,900 acres to explore, hunt and hike! Main camp area has a beautiful view overlooking the river. Trail system throughout the property brings you near many of the deer stands situated on the property. Deer, turkey, bear and waterfowl are plentiful!! Excellent hard bottom on the river bottom which makes for great swimming and hanging out near by. Smallmouth bass, northern pike and walleye can be caught from the shoreline. Two ponds near the river edge set up perfectly for waterfowl hunting! 10x20 wood shed in the camp area stocked with fresh cut wood! Food plot near the entrance of the property is ready for planting this spring/summer. Come check out this amazing recreational property!

**Additional Details:**

Lot Acres	49.66
Lot Dimensions	Lengthy
School District	182
Taxes	\$444
Taxes with Assessments	\$444
Tax Year	2024

**Additional Features:**

**Driving Directions:**

Take South Bear lake rd to the end.



Listed By:  
Timber Ghost Realty, LLC

Affinity Real Estate Inc. participates in the Regional Multiple Listing Service of Minnesota, Inc Broker Reciprocity (sm) program, allowing us to display other broker's listings on our website. All properties are subject to prior sale, change or withdrawal.



**Call Affinity Real Estate**

**218-237-3333**

**[info@affinityrealestate.com](mailto:info@affinityrealestate.com)**



**Affinity Real Estate - 600 Park Avenue South - Park Rapids MN 56470**





SPARTAN GC-A4Gb M 10/30/2019 08:53:50 024°F P3



website: [www.AffinityRealEstate.com](http://www.AffinityRealEstate.com) | email: [info@affinityrealestate.com](mailto:info@affinityrealestate.com) | office: 218-237-3333 | fax: 218-237-3377



**\$266,000**  
MLS 6709596 Lake Land  
XXX South Bear Lake Road  
Crosby MN 56455





website: [www.AffinityRealEstate.com](http://www.AffinityRealEstate.com) | email: [info@affinityrealestate.com](mailto:info@affinityrealestate.com) | office: 218-237-3333 | fax: 218-237-3377



**\$266,000**

MLS 6709596 Lake Land  
XXX South Bear Lake Road  
Crosby MN 56455





website: [www.AffinityRealEstate.com](http://www.AffinityRealEstate.com) | email: [info@affinityrealestate.com](mailto:info@affinityrealestate.com) | office: 218-237-3333 | fax: 218-237-3377



**\$266,000**  
 MLS 6709596 Lake Land  
 XXX South Bear Lake Road  
 Crosby MN 56455





website: [www.AffinityRealEstate.com](http://www.AffinityRealEstate.com) | email: [info@affinityrealestate.com](mailto:info@affinityrealestate.com) | office: 218-237-3333 | fax: 218-237-3377

**Affinity**  
REAL ESTATE INC

**\$266,000**  
MLS 6709596 Lake Land  
XXX South Bear Lake Road  
Crosby MN 56455





website: [www.AffinityRealEstate.com](http://www.AffinityRealEstate.com) | email: [info@affinityrealestate.com](mailto:info@affinityrealestate.com) | office: 218-237-3333 | fax: 218-237-3377



**\$266,000**  
 MLS 6709596 Lake Land  
 XXX South Bear Lake Road  
 Crosby MN 56455





website: [www.AffinityRealEstate.com](http://www.AffinityRealEstate.com) | email: [info@affinityrealestate.com](mailto:info@affinityrealestate.com) | office: 218-237-3333 | fax: 218-237-3377



**\$266,000**  
MLS 6709596 Lake Land  
XXX South Bear Lake Road  
Crosby MN 56455



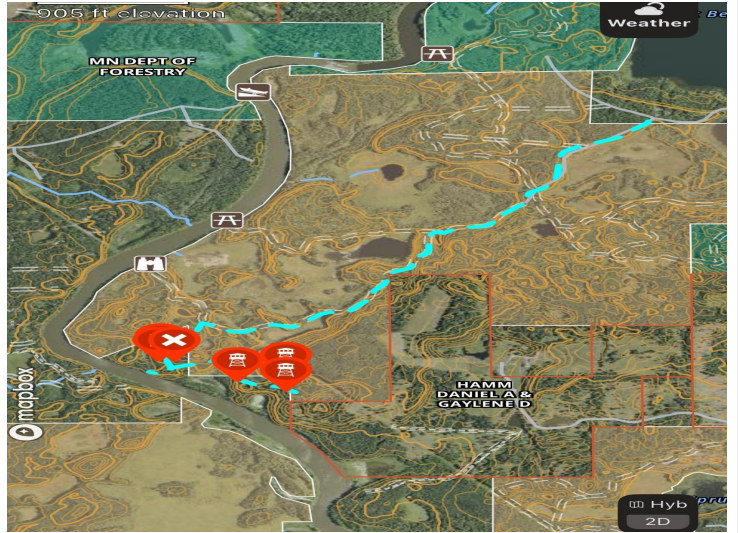


website: [www.AffinityRealEstate.com](http://www.AffinityRealEstate.com) | email: [info@affinityrealestate.com](mailto:info@affinityrealestate.com) | office: 218-237-3333 | fax: 218-237-3377



**\$266,000**  
 MLS 6709596 Lake Land  
 XXX South Bear Lake Road  
 Crosby MN 56455





website: [www.AffinityRealEstate.com](http://www.AffinityRealEstate.com) | email: [info@affinityrealestate.com](mailto:info@affinityrealestate.com) | office: 218-237-3333 | fax: 218-237-3377



**\$266,000**  
 MLS 6709596 Lake Land  
 XXX South Bear Lake Road  
 Crosby MN 56455





website: [www.AffinityRealEstate.com](http://www.AffinityRealEstate.com) | email: [info@affinityrealestate.com](mailto:info@affinityrealestate.com) | office: 218-237-3333 | fax: 218-237-3377



**\$266,000**

MLS 6709596 Lake Land  
XXX South Bear Lake Road  
Crosby MN 56455





website: [www.AffinityRealEstate.com](http://www.AffinityRealEstate.com) | email: [info@affinityrealestate.com](mailto:info@affinityrealestate.com) | office: 218-237-3333 | fax: 218-237-3377



**\$266,000**  
 MLS 6709596 Lake Land  
 XXX South Bear Lake Road  
 Crosby MN 56455





website: [www.AffinityRealEstate.com](http://www.AffinityRealEstate.com) | email: [info@affinityrealestate.com](mailto:info@affinityrealestate.com) | office: 218-237-3333 | fax:218-237-3377



**\$266,000**

MLS 6709596 Lake Land  
XXX South Bear Lake Road  
Crosby MN 56455