



MLS 6709668 Residential

\$378,500

2,094 sq ft
3 bedrooms
2 baths

12858 Edgewater Road
Bemidji MN 56601

Status: Active

Description:

8.8 ACRES of land to play on, with a garage large enough for the tall trucks and toys. This home that is 3BED/2BATH was new in 2019 and is very efficient. The office space is the perfect space for personal or business. Less than 15 min to Bemidji creates the perfect space for privacy and yet convenient for shopping. Low maintenance and low taxes are what you will find at this lovely home. Contact your Realtor today..

Additional Details:

Year Built	2019
Lot Acres	8.8
Lot Dimensions	1000x500
Garage Stalls	2
School District	31
Taxes	\$2,062
Taxes with Assessments	\$2,062
Tax Year	2025

Additional Features:

Basement: Slab **Fuel:** Propane **Garage:** 2 **Heat:** Forced Air, Fireplace(s) **Sewer:** Private Sewer, Tank with Drainage Field **Water:** Submersible - 4 Inch, Drilled, Private **Air Conditioning:** Central Air

Driving Directions:

Hwy to Blom Rd, Holly Hock Rd NE, Grant Creek Rd NW, to Edgewater Rd NW, left, Property will be on the left



Listed By:
Andy Williams Realty Group, LLC

Affinity Real Estate Inc. participates in the Regional Multiple Listing Service of Minnesota, Inc Broker Reciprocity (sm) program, allowing us to display other broker's listings on our website. All properties are subject to prior sale, change or withdrawal.



Call Affinity Real Estate

218-237-3333

info@affinityrealestate.com



Affinity Real Estate - 600 Park Avenue South - Park Rapids MN 56470



website: www.AffinityRealEstate.com | email: info@affinityrealestate.com | office: 218-237-3333 | fax: 218-237-3377



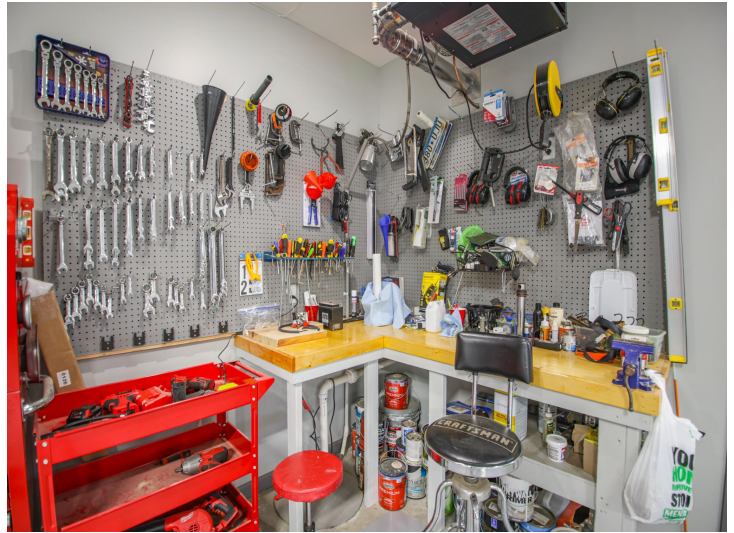
\$378,500
 MLS 6709668 Residential
 12858 Edgewater Road
 Bemidji MN 56601



website: www.AffinityRealEstate.com | email: info@affinityrealestate.com | office: 218-237-3333 | fax: 218-237-3377



\$378,500
 MLS 6709668 Residential
 12858 Edgewater Road
 Bemidji MN 56601



website: www.AffinityRealEstate.com | email: info@affinityrealestate.com | office: 218-237-3333 | fax: 218-237-3377



\$378,500
 MLS 6709668 Residential
 12858 Edgewater Road
 Bemidji MN 56601



website: www.AffinityRealEstate.com | email: info@affinityrealestate.com | office: 218-237-3333 | fax: 218-237-3377

Affinity
REAL ESTATE INC

\$378,500
MLS 6709668 Residential
12858 Edgewater Road
Bemidji MN 56601



website: www.AffinityRealEstate.com | email: info@affinityrealestate.com | office: 218-237-3333 | fax: 218-237-3377



\$378,500
 MLS 6709668 Residential
 12858 Edgewater Road
 Bemidji MN 56601



website: www.AffinityRealEstate.com | email: info@affinityrealestate.com | office: 218-237-3333 | fax: 218-237-3377



\$378,500
 MLS 6709668 Residential
 12858 Edgewater Road
 Bemidji MN 56601