



MLS 6709713 Lake Home

\$500,000

1,424 sq ft
3 bedrooms
2 baths

38227 County Highway 34
Ogema MN 56569

Waterfront: White Earth

Status: Active

Description:

\$20,000 PRICE DROP Discover this charming 3-bedroom, 2-bath year-round home situated on a 1-acre corner lot with picturesque views of Little White Earth Lake. The open-concept kitchen/dining area features a large walk-in pantry and patio access to enjoy the beautiful lake views. The living room offers a cozy gas fireplace and a skylight that fills the space with natural light. The master bedroom includes a private bath and a spacious walk-in closet. Designed for comfort and accessibility, the home is handicap accessible, features in-floor heating, and includes a washer and dryer. Exterior amenities include an oversized, finished, and heated 20x22 attached two-stall garage, plus a 24x36 detached storage shed and workshop that is insulated, heated, and powered. Fruit trees have been started on the south side of the property. Additionally, the home boasts 177 feet of frontage on Little White Earth Lake with direct boat access to the highly desirable White Earth Lake. Don't miss your opportunity to own this property offering an ideal combination of comfort, functionality, and waterfront living! Book your showing today before this one gets away!!

Additional Details:

Year Built	2001
Lot Acres	1.02
Lot Dimensions	Irregular
Garage Stalls	4
School District	435
Taxes	\$2,366
Taxes with Assessments	\$2,426
Tax Year	2024

Additional Features:

Basement: Slab **Fuel:** Electric **Garage:** 4 **Heat:** Radiant Floor, Radiant **Sewer:** Private Sewer, Septic System Compliant - Yes, Tank with Drainage Field **Water:** Private, Well **Air Conditioning:** None

Driving Directions:

Follow Google Map instructions. Property will be located directly off of CR-34 to the North. 2 entrances - to attached garage and detached garage.



Listed By:
REALTY XPERTS

Affinity Real Estate Inc. participates in the Regional Multiple Listing Service of Minnesota, Inc Broker Reciprocity (sm) program, allowing us to display other broker's listings on our website. All properties are subject to prior sale, change or withdrawal.



Call Affinity Real Estate

218-237-3333

info@affinityrealestate.com



Affinity Real Estate - 600 Park Avenue South - Park Rapids MN 56470



website: www.AffinityRealEstate.com | email: info@affinityrealestate.com | office: 218-237-3333 | fax: 218-237-3377



\$500,000
 MLS 6709713 Lake Home
 38227 County Highway 34
 Ogema MN 56569



website: www.AffinityRealEstate.com | email: info@affinityrealestate.com | office: 218-237-3333 | fax: 218-237-3377

Affinity
REAL ESTATE INC

\$500,000
MLS 6709713 Lake Home
38227 County Highway 34
Ogema MN 56569



website: www.AffinityRealEstate.com | email: info@affinityrealestate.com | office: 218-237-3333 | fax: 218-237-3377

Affinity
REAL ESTATE INC

\$500,000
MLS 6709713 Lake Home
38227 County Highway 34
Ogema MN 56569



website: www.AffinityRealEstate.com | email: info@affinityrealestate.com | office: 218-237-3333 | fax: 218-237-3377

Affinity
REAL ESTATE INC

\$500,000
MLS 6709713 Lake Home
38227 County Highway 34
Ogema MN 56569



website: www.AffinityRealEstate.com | email: info@affinityrealestate.com | office: 218-237-3333 | fax: 218-237-3377

Affinity
REAL ESTATE INC

\$500,000

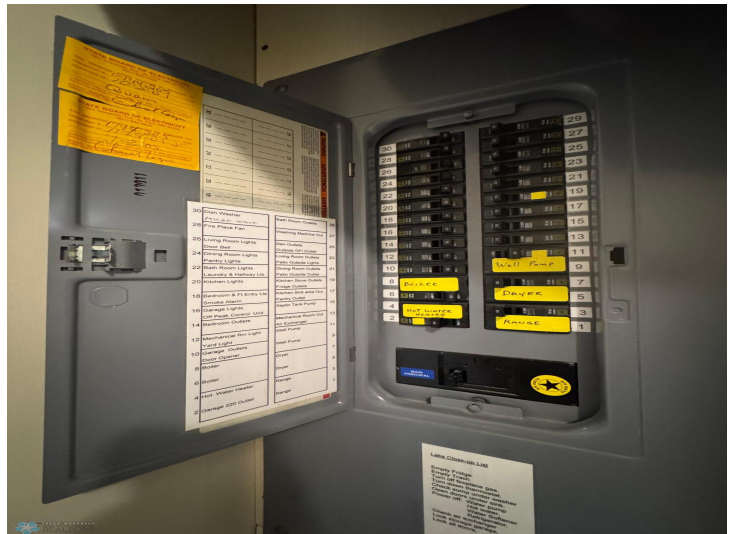
MLS 6709713 Lake Home
38227 County Highway 34
Ogema MN 56569



website: www.AffinityRealEstate.com | email: info@affinityrealestate.com | office: 218-237-3333 | fax: 218-237-3377

Affinity
REAL ESTATE INC

\$500,000
MLS 6709713 Lake Home
38227 County Highway 34
Ogema MN 56569



website: www.AffinityRealEstate.com | email: info@affinityrealestate.com | office: 218-237-3333 | fax: 218-237-3377

Affinity
REAL ESTATE INC

\$500,000
MLS 6709713 Lake Home
38227 County Highway 34
Ogema MN 56569



website: www.AffinityRealEstate.com | email: info@affinityrealestate.com | office: 218-237-3333 | fax: 218-237-3377

Affinity
REAL ESTATE INC

\$500,000

MLS 6709713 Lake Home
38227 County Highway 34
Ogema MN 56569



website: www.AffinityRealEstate.com | email: info@affinityrealestate.com | office: 218-237-3333 | fax:218-237-3377



\$500,000
MLS 6709713 Lake Home
38227 County Highway 34
Ogema MN 56569

website: www.AffinityRealEstate.com | email: info@affinityrealestate.com | office: 218-237-3333 | fax:218-237-3377



\$500,000

MLS 6709713 Lake Home
38227 County Highway 34
Ogema MN 56569

website: www.AffinityRealEstate.com | email: info@affinityrealestate.com | office: 218-237-3333 | fax:218-237-3377



\$500,000

MLS 6709713 Lake Home
38227 County Highway 34
Ogema MN 56569