



MLS 6709915 Residential

\$349,900

1,930 sq ft
5 bedrooms
2 baths

6528 Excelsior Road
Baxter MN 56425

Status: Active

Description:

Check out this 5-bedroom, 2-bathroom home, located in great Baxter neighborhood offers spacious living with convenience and comfort. Lower level has kitchenette with separate entrance making it ideal for an investment opportunity/rental. This residence boasts many new updates (see supplements) A 2-stall attached garage, providing ample space for vehicles and storage. The interior of the home is designed with family living in mind, the deck is accessible from the kitchen and extends the living space outdoors. Ideal for relaxation or entertaining. New privacy fence in the backyard, shed for extra storage, and large fenced garden on this corner 0.93 lot. Brand new roof in 2023, new hickory hardwood floors, lower level bathroom remodel, fresh paint throughout, and much more! Its location is a highlight offering easy access to amenities, schools, shopping, and dining. This home is a perfect blend of comfort, convenience, and community, don't wait on this one!

Additional Details:

Year Built	1970
Lot Acres	0.93
Lot Dimensions	200 x 204
Garage Stalls	2
School District	181
Taxes	\$2,565
Taxes with Assessments	\$2,590
Tax Year	2025

Additional Features:

Fuel: Natural Gas **Heat:** Boiler, Hot Water

Driving Directions:

From intersection of State Hwy 371 & State Hwy 210 in Baxter, west on 210 for 1 mile, right on Inglewood, proceed 0.4 mile then right on Excelsior to house & fire # 6528 on left.



Listed By:
Kurilla Real Estate LTD

Affinity Real Estate Inc. participates in the Regional Multiple Listing Service of Minnesota, Inc Broker Reciprocity (sm) program, allowing us to display other broker's listings on our website. All properties are subject to prior sale, change or withdrawal.



Call Affinity Real Estate

218-237-3333

info@affinityrealestate.com



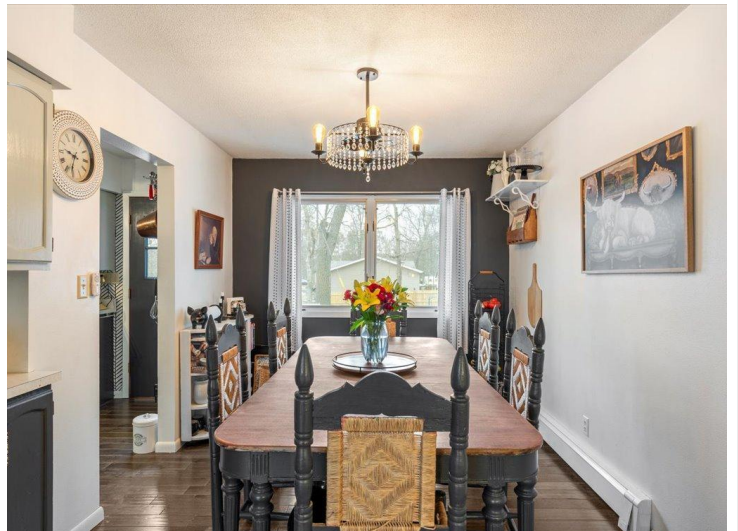
Affinity Real Estate - 600 Park Avenue South - Park Rapids MN 56470



website: www.AffinityRealEstate.com | email: info@affinityrealestate.com | office: 218-237-3333 | fax: 218-237-3377

Affinity
REAL ESTATE INC

\$349,900
MLS 6709915 Residential
6528 Excelsior Road
Baxter MN 56425



website: www.AffinityRealEstate.com | email: info@affinityrealestate.com | office: 218-237-3333 | fax: 218-237-3377

Affinity
REAL ESTATE INC

\$349,900
MLS 6709915 Residential
6528 Excelsior Road
Baxter MN 56425



website: www.AffinityRealEstate.com | email: info@affinityrealestate.com | office: 218-237-3333 | fax: 218-237-3377

Affinity
REAL ESTATE INC

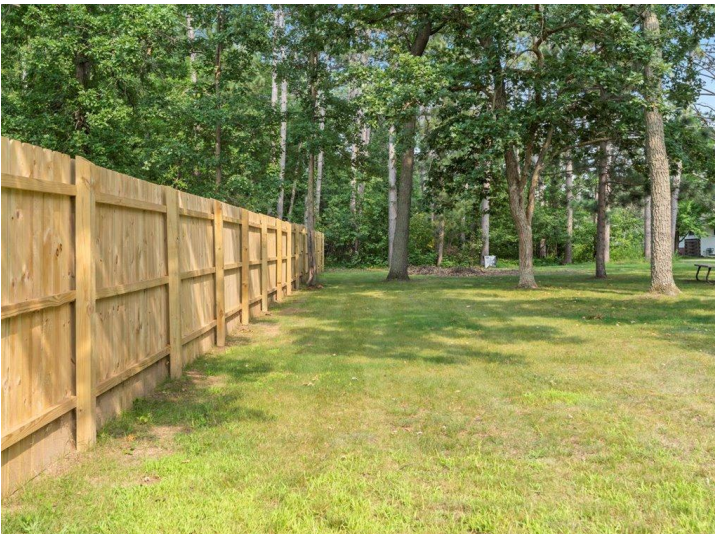
\$349,900
MLS 6709915 Residential
6528 Excelsior Road
Baxter MN 56425



website: www.AffinityRealEstate.com | email: info@affinityrealestate.com | office: 218-237-3333 | fax: 218-237-3377



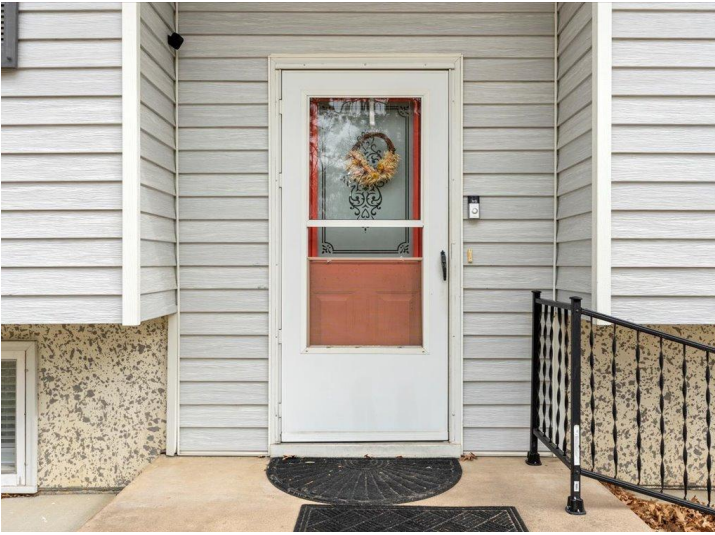
\$349,900
MLS 6709915 Residential
6528 Excelsior Road
Baxter MN 56425



website: www.AffinityRealEstate.com | email: info@affinityrealestate.com | office: 218-237-3333 | fax: 218-237-3377



\$349,900
 MLS 6709915 Residential
 6528 Excelsior Road
 Baxter MN 56425



website: www.AffinityRealEstate.com | email: info@affinityrealestate.com | office: 218-237-3333 | fax: 218-237-3377



\$349,900
MLS 6709915 Residential
6528 Excelsior Road
Baxter MN 56425