



MLS 6710052 Lake Land

**\$47,000**

**Description:**

Welcome to Nordenstua on Sibley. This property offers a peaceful wooded setting with access to tranquil Sibley Lake. One can enjoy all that the Breezy Point/ Pequot Lakes area has to offer. Perfect for the golfer, shopper, or the peace and quiet to sit in the outside and enjoy the latest best seller. Visit the property to truly enjoy what it offers.

**Additional Details:**

Lot Acres	0.09
Lot Dimensions	43x88
School District	186
Taxes	\$562
Taxes with Assessments	\$562
Tax Year	2025

**Additional Features:**

**Driving Directions:**

From Patriot Avenue, go east on Co Rd 17 to property.



Listed By:  
Coldwell Banker Realty

Affinity Real Estate Inc. participates in the Regional Multiple Listing Service of Minnesota, Inc Broker Reciprocity (sm) program, allowing us to display other broker's listings on our website. All properties are subject to prior sale, change or withdrawal.



**Call Affinity Real Estate**

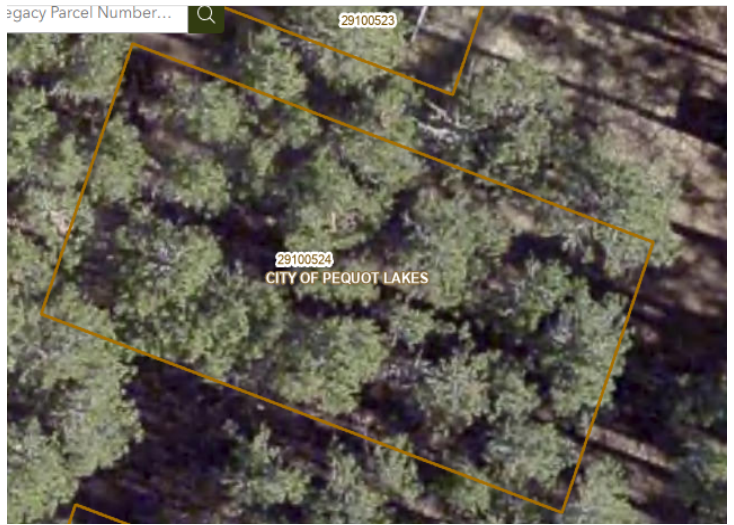
**218-237-3333**

**info@affinityrealestate.com**



**Affinity Real Estate - 600 Park Avenue South - Park Rapids MN 56470**





website: [www.AffinityRealEstate.com](http://www.AffinityRealEstate.com) | email: [info@affinityrealestate.com](mailto:info@affinityrealestate.com) | office: 218-237-3333 | fax: 218-237-3377



**\$47,000**

MLS 6710052 Lake Land  
3823 County Road 17  
Pequot Lakes MN 56472



website: [www.AffinityRealEstate.com](http://www.AffinityRealEstate.com) | email: [info@affinityrealestate.com](mailto:info@affinityrealestate.com) | office: 218-237-3333 | fax:218-237-3377



**\$47,000**

MLS 6710052 Lake Land  
3823 County Road 17  
Pequot Lakes MN 56472

website: [www.AffinityRealEstate.com](http://www.AffinityRealEstate.com) | email: [info@affinityrealestate.com](mailto:info@affinityrealestate.com) | office: 218-237-3333 | fax:218-237-3377



**\$47,000**

MLS 6710052 Lake Land  
3823 County Road 17  
Pequot Lakes MN 56472