



MLS 6710276 Lake Home

\$1,100,000

2,800 sq ft
5 bedrooms
2 baths

23062 Gosslee Lane
Detroit Lakes MN 56501

Waterfront: Pelican

Status: Active

Description:

Pelican Lake! Enjoy Scenic Views and Privacy from this Large 2.4 Acre Lot that Boasts a Three Bedroom Two Bath Year-Around Home with an Additional 2 Rooms in Guest House. This Lot has 100 Feet of Exceptional Hard Bottom Sand for Swimming and Entertaining. Find Yourself relaxing on Multiple Decks Overlooking the Lake or playing a Game of Basketball or Sand Volleyball on the back Lot. Unique Large Master Bedroom (500 sq ft.) with Panoramic View of Lake. Updates Include: Newer 3-Stall Garage (2021) with Guest House and Gym, Granite Counters, Hickory Cabinets, Heated Tile Floors, New HVAC Mini Split System (2023), Newer Smart Siding and Steel Storage Shed(30x50) on Back Lot. A Total of 2800 Square Feet of Finished Living Space. This Lot has very good privacy as its located at the end of the Beach Road. Frontage has Convenient Walkway slab for Easy Access to Water. Large Septic and Drain Field with Deep Well.

Additional Details:

Year Built	2007
Lot Acres	2.44
Lot Dimensions	100x1100
Garage Stalls	3
School District	548
Taxes	\$6,732
Taxes with Assessments	\$6,178
Tax Year	2024

Additional Features:

Basement: Crawl Space **Fuel:** Propane **Garage:** 3 **Heat:** Baseboard, Ductless Mini-Split **Sewer:** Septic System Compliant - Yes, Tank with Drainage Field **Water:** Well **Air Conditioning:** Ductless Mini-Split

Driving Directions:



Listed By:
Better Homes and Gardens Real Estate
Advantage

Affinity Real Estate Inc. participates in the Regional Multiple Listing Service of Minnesota, Inc Broker Reciprocity (sm) program, allowing us to display other broker's listings on our website. All properties are subject to prior sale, change or withdrawal.



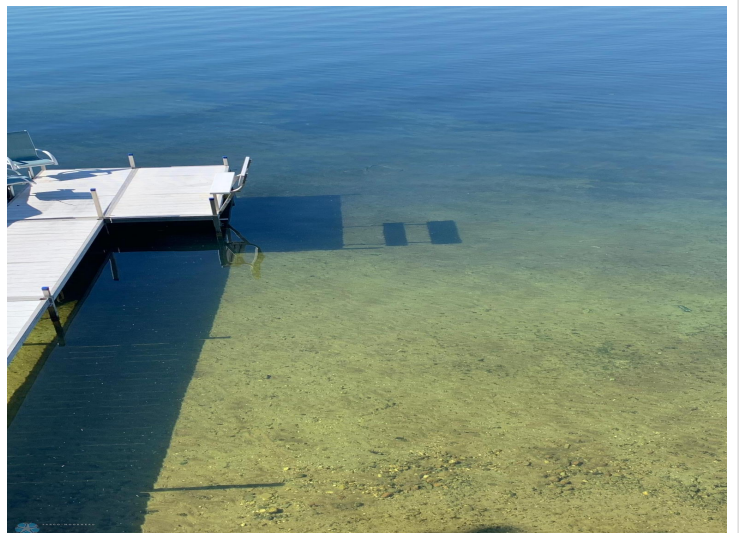
Call Affinity Real Estate

218-237-3333

info@affinityrealestate.com



Affinity Real Estate - 600 Park Avenue South - Park Rapids MN 56470

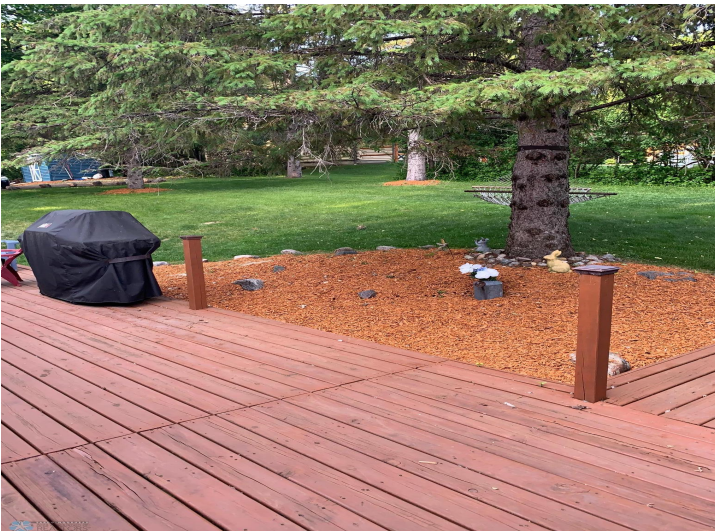
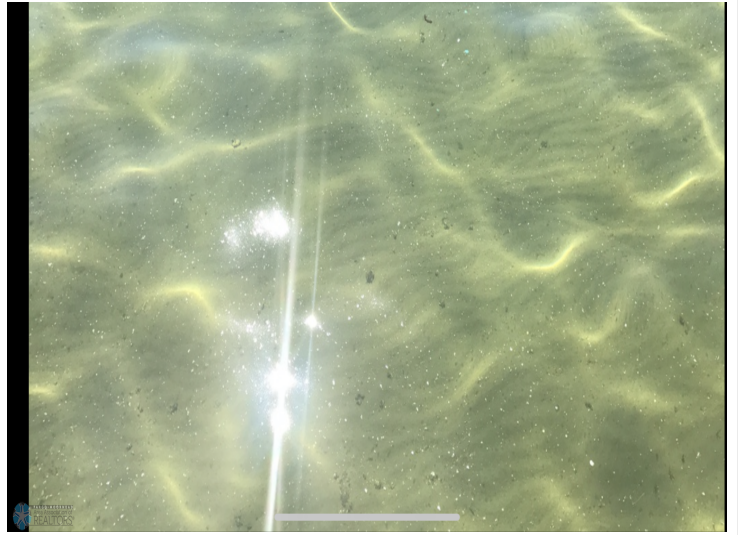


website: www.AffinityRealEstate.com | email: info@affinityrealestate.com | office: 218-237-3333 | fax: 218-237-3377

Affinity
REAL ESTATE INC

\$1,100,000

MLS 6710276 Lake Home
23062 Gosslee Lane
Detroit Lakes MN 56501



website: www.AffinityRealEstate.com | email: info@affinityrealestate.com | office: 218-237-3333 | fax: 218-237-3377

Affinity
REAL ESTATE INC

\$1,100,000

MLS 6710276 Lake Home
23062 Gosslee Lane
Detroit Lakes MN 56501



website: www.AffinityRealEstate.com | email: info@affinityrealestate.com | office: 218-237-3333 | fax: 218-237-3377

Affinity
REAL ESTATE INC

\$1,100,000
MLS 6710276 Lake Home
23062 Gosslee Lane
Detroit Lakes MN 56501



website: www.AffinityRealEstate.com | email: info@affinityrealestate.com | office: 218-237-3333 | fax: 218-237-3377

Affinity
REAL ESTATE INC

\$1,100,000
MLS 6710276 Lake Home
23062 Gosslee Lane
Detroit Lakes MN 56501



website: www.AffinityRealEstate.com | email: info@affinityrealestate.com | office: 218-237-3333 | fax: 218-237-3377

Affinity
REAL ESTATE INC

\$1,100,000
MLS 6710276 Lake Home
23062 Gosslee Lane
Detroit Lakes MN 56501



website: www.AffinityRealEstate.com | email: info@affinityrealestate.com | office: 218-237-3333 | fax: 218-237-3377

Affinity
REAL ESTATE INC

\$1,100,000
MLS 6710276 Lake Home
23062 Gosslee Lane
Detroit Lakes MN 56501



website: www.AffinityRealEstate.com | email: info@affinityrealestate.com | office: 218-237-3333 | fax: 218-237-3377

Affinity
REAL ESTATE INC

\$1,100,000
MLS 6710276 Lake Home
23062 Gosslee Lane
Detroit Lakes MN 56501



website: www.AffinityRealEstate.com | email: info@affinityrealestate.com | office: 218-237-3333 | fax: 218-237-3377

Affinity
REAL ESTATE INC

\$1,100,000
MLS 6710276 Lake Home
23062 Gosslee Lane
Detroit Lakes MN 56501



website: www.AffinityRealEstate.com | email: info@affinityrealestate.com | office: 218-237-3333 | fax: 218-237-3377



\$1,100,000

MLS 6710276 Lake Home
23062 Gosslee Lane
Detroit Lakes MN 56501

website: www.AffinityRealEstate.com | email: info@affinityrealestate.com | office: 218-237-3333 | fax:218-237-3377



\$1,100,000

MLS 6710276 Lake Home
23062 Gosslee Lane
Detroit Lakes MN 56501

website: www.AffinityRealEstate.com | email: info@affinityrealestate.com | office: 218-237-3333 | fax: 218-237-3377



\$1,100,000

MLS 6710276 Lake Home
23062 Gosslee Lane
Detroit Lakes MN 56501