



MLS 6710916 Residential

\$265,000

1,283 sq ft
3 bedrooms
2 baths

508 Main Avenue
Frazee MN 56544

Status: Active

Description:

Updated 1692 sq. ft. single-story home in Frazee, MN with new siding/roof/windows offers a blend of comfort and functionality. Set on nearly 4 City acres including the 2nd parcel, the spacious layout includes 3 bedrooms, 2 bathrooms, and a variety of living spaces. The kitchen is a highlight, featuring ample cabinetry, black appliances, and a large center island with a breakfast bar. Natural light floods the rooms through multiple (new) windows, while ceiling fans provide air circulation. The home boasts both carpeted and new LVP flooring, creating a warm ambiance. A dedicated laundry and mud room adds convenience, and multiple closets offer plenty of storage. This expansive city property offers multiple detached buildings including the newly sided 26x40 garage. The practical design of the home, generous room sizes, and multiple outbuildings make it an ideal family property for those seeking a rural feel with city amenities!

Additional Details:

Year Built	1946
Lot Acres	3.82
Lot Dimensions	Irregular
Garage Stalls	3
School District	23
Taxes	\$2,824
Taxes with Assessments	\$2,824
Tax Year	2024

Additional Features:

Basement: Concrete, Unfinished **Fuel:** Natural Gas **Garage:** 3 **Heat:** Forced Air **Sewer:** City Sewer/Connected **Water:** City Water/Connected
Air Conditioning: Central Air

Driving Directions:

Highway 10 to Frazee Exit, North on 87 into Frazee, Right on to E Main Ave to 508 E Main Ave



Listed By:
The Real Estate Company of Detroit Lakes

Affinity Real Estate Inc. participates in the Regional Multiple Listing Service of Minnesota, Inc Broker Reciprocity (sm) program, allowing us to display other broker's listings on our website. All properties are subject to prior sale, change or withdrawal.



Call Affinity Real Estate

218-237-3333

info@affinityrealestate.com



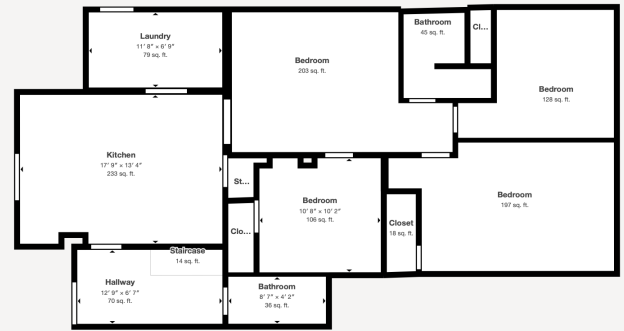
Affinity Real Estate - 600 Park Avenue South - Park Rapids MN 56470



website: www.AffinityRealEstate.com | email: info@affinityrealestate.com | office: 218-237-3333 | fax: 218-237-3377

Affinity
REAL ESTATE INC

\$265,000
MLS 6710916 Residential
508 Main Avenue
Frazee MN 56544



Matterport Property Report
 Frazee city home on 4 acres
 Gross Floor Area - Full Property 1,381 sq. ft. | Floor 1 1,381 sq. ft.
 Colors and dimensions are approximate. Actual may vary.

Visit 3D space on
 Matterport



website: www.AffinityRealEstate.com | email: info@affinityrealestate.com | office: 218-237-3333 | fax: 218-237-3377

Affinity
 REAL ESTATE INC

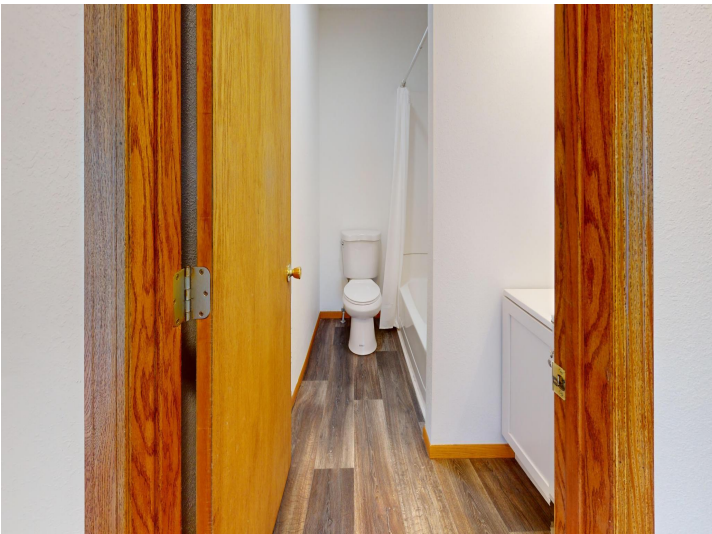
\$265,000
 MLS 6710916 Residential
 508 Main Avenue
 Frazee MN 56544



website: www.AffinityRealEstate.com | email: info@affinityrealestate.com | office: 218-237-3333 | fax: 218-237-3377



\$265,000
 MLS 6710916 Residential
 508 Main Avenue
 Frazee MN 56544



website: www.AffinityRealEstate.com | email: info@affinityrealestate.com | office: 218-237-3333 | fax: 218-237-3377



\$265,000
 MLS 6710916 Residential
 508 Main Avenue
 Frazee MN 56544



website: www.AffinityRealEstate.com | email: info@affinityrealestate.com | office: 218-237-3333 | fax: 218-237-3377



\$265,000
 MLS 6710916 Residential
 508 Main Avenue
 Frazee MN 56544



website: www.AffinityRealEstate.com | email: info@affinityrealestate.com | office: 218-237-3333 | fax: 218-237-3377



\$265,000
 MLS 6710916 Residential
 508 Main Avenue
 Frazee MN 56544



website: www.AffinityRealEstate.com | email: info@affinityrealestate.com | office: 218-237-3333 | fax: 218-237-3377

Affinity
REAL ESTATE INC

\$265,000
MLS 6710916 Residential
508 Main Avenue
Frazee MN 56544



website: www.AffinityRealEstate.com | email: info@affinityrealestate.com | office: 218-237-3333 | fax: 218-237-3377

Affinity
REAL ESTATE INC

\$265,000
MLS 6710916 Residential
508 Main Avenue
Frazee MN 56544



website: www.AffinityRealEstate.com | email: info@affinityrealestate.com | office: 218-237-3333 | fax:218-237-3377



\$265,000
MLS 6710916 Residential
508 Main Avenue
Frazee MN 56544