



MLS 6711119 Lake Land

\$69,900

Description:

Excellent location near numerous area lakes, and minutes to Crosby trails, mountain biking, hunting, snowmobiling, and four-wheeling! The rolling land features a cleared building site, suitable for an RV or cabin. It includes a compliant septic system, a drilled well, and electricity (not currently connected), with limited views of Maple Lake. This beautifully wooded, rolling terrain is situated on a minimally maintained road and was surveyed in 2019. Enjoy the serenity and wildlife. The buyer should confirm any building uses and permits with the county. Close to Brainerd, Deerwood, Crosby, and Garrison for shopping, healthcare, and entertainment! The seller will consider a Contract for Deed.

Additional Details:

Lot Acres	6.33
Lot Dimensions	irregular
School District	182
Taxes	\$392
Taxes with Assessments	\$352
Tax Year	2025

Additional Features:

Driving Directions:

From Garrison, Take State Hwy 18 (MN 18) 4.3 miles to Right on State Hwy 6 (MN 6). Continue 2.1 miles to Left on Warren Dr. Go approximately 500 feet to left on Maple Lake Drive. Continue less than ½ mile to property on Right.



Listed By:
Sandelands Realty

Affinity Real Estate Inc. participates in the Regional Multiple Listing Service of Minnesota, Inc Broker Reciprocity (sm) program, allowing us to display other broker's listings on our website. All properties are subject to prior sale, change or withdrawal.



Call Affinity Real Estate

218-237-3333

info@affinityrealestate.com

MLS



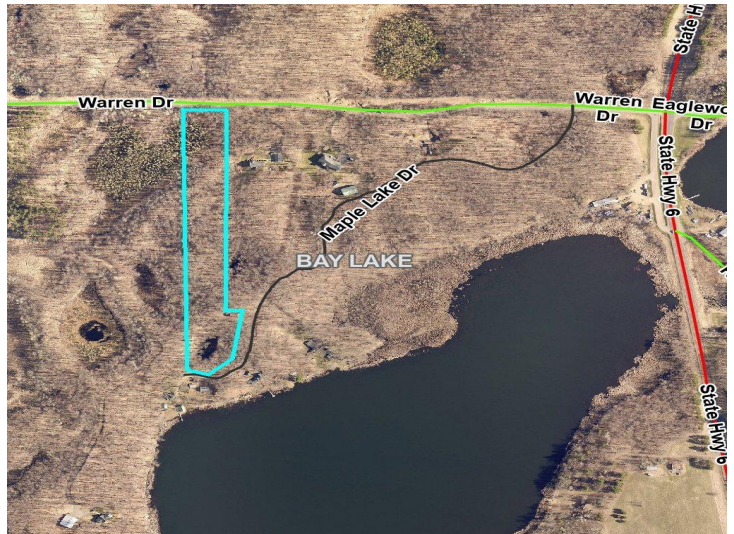
Affinity Real Estate - 600 Park Avenue South - Park Rapids MN 56470



website: www.AffinityRealEstate.com | email: info@affinityrealestate.com | office: 218-237-3333 | fax: 218-237-3377



\$69,900
 MLS 6711119 Lake Land
 14755 Maple Lake Drive
 Deerwood MN 56444



website: www.AffinityRealEstate.com | email: info@affinityrealestate.com | office: 218-237-3333 | fax: 218-237-3377



\$69,900
 MLS 6711119 Lake Land
 14755 Maple Lake Drive
 Deerwood MN 56444



website: www.AffinityRealEstate.com | email: info@affinityrealestate.com | office: 218-237-3333 | fax: 218-237-3377



\$69,900
MLS 6711119 Lake Land
14755 Maple Lake Drive
Deerwood MN 56444



website: www.AffinityRealEstate.com | email: info@affinityrealestate.com | office: 218-237-3333 | fax: 218-237-3377



\$69,900
MLS 6711119 Lake Land
14755 Maple Lake Drive
Deerwood MN 56444