



MLS 6711161 Residential

\$149,900

1,600 sq ft
2 bedrooms
1 baths

1538 State 84
Backus MN 56435

Status: Pending

Description:

Charming 2-bedroom fully furnished home on 1.84 acres, featuring spacious rooms, a walk-in closet, and a beautifully tiled 3/4 bath. Enjoy recent updates including new flooring, tongue-and-groove pine accents, refreshed kitchen cabinets, countertops, and a newer fridge. Just a stone's throw from Ponto Lake public access and close to tons of public hunting land, this property is perfect as a first home, rental, or affordable up-north retreat. Conveniently located between Backus and Longville—don't miss out on this opportunity!

Additional Details:

Year Built	1960
Lot Acres	1.84
Lot Dimensions	400x200
School District	2174
Taxes	\$466
Taxes with Assessments	\$532
Tax Year	2025

Additional Features:

Basement: Block, Egress Window(s), Finished, Full **Fuel:** Propane **Heat:** Forced Air **Sewer:** Private Sewer, Tank with Drainage Field
Water: Submersible - 4 Inch, Drilled, Private, Well **Air Conditioning:** None

Driving Directions:

From Godfrey's travel 9.1 miles on State Hwy 87 and the property will be on your right.



Listed By:
eXp Realty

Affinity Real Estate Inc. participates in the Regional Multiple Listing Service of Minnesota, Inc Broker Reciprocity (sm) program, allowing us to display other broker's listings on our website. All properties are subject to prior sale, change or withdrawal.



Call Affinity Real Estate

218-237-3333

info@affinityrealestate.com



Affinity Real Estate - 600 Park Avenue South - Park Rapids MN 56470



website: www.AffinityRealEstate.com | email: info@affinityrealestate.com | office: 218-237-3333 | fax: 218-237-3377

Affinity
REAL ESTATE INC

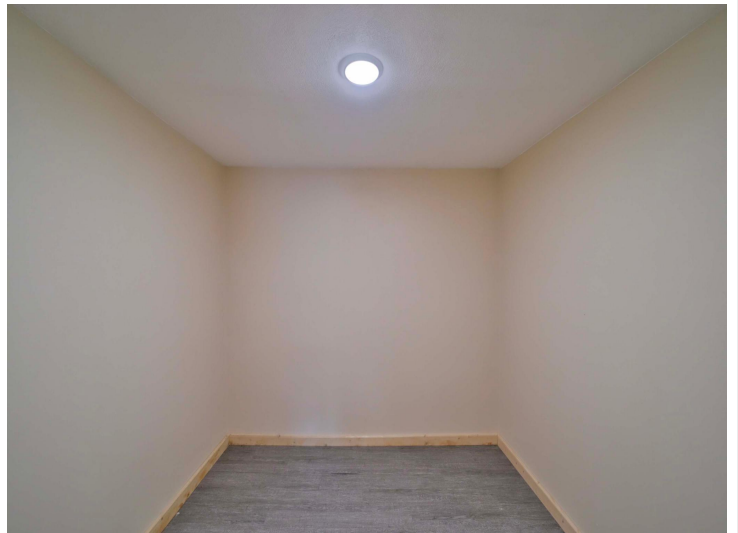
\$149,900
MLS 6711161 Residential
1538 State 84
Backus MN 56435



website: www.AffinityRealEstate.com | email: info@affinityrealestate.com | office: 218-237-3333 | fax: 218-237-3377

Affinity
REAL ESTATE INC

\$149,900
MLS 6711161 Residential
1538 State 84
Backus MN 56435



website: www.AffinityRealEstate.com | email: info@affinityrealestate.com | office: 218-237-3333 | fax: 218-237-3377



\$149,900
MLS 6711161 Residential
1538 State 84
Backus MN 56435



website: www.AffinityRealEstate.com | email: info@affinityrealestate.com | office: 218-237-3333 | fax: 218-237-3377



\$149,900
 MLS 6711161 Residential
 1538 State 84
 Backus MN 56435



website: www.AffinityRealEstate.com | email: info@affinityrealestate.com | office: 218-237-3333 | fax: 218-237-3377



\$149,900
MLS 6711161 Residential
1538 State 84
Backus MN 56435