



MLS 6711224 Residential

\$599,900

3,512 sq ft
3 bedrooms
4 baths

6076 Tall Pines Road
Bemidji MN 56601

Status: Active

Description:

Welcome to your dream Up North getaway or year-round residence! Nestled on nearly 6 private acres across from public access on Big Bass Lake, this exceptional 3+ bedroom, 4 bathroom home offers the perfect blend of comfort, luxury, and nature.

Step inside to a vaulted living room filled with natural light, anchored by a cozy fireplace and open-concept layout ideal for entertaining. The lower level features a beautiful built in bar area, another fireplace and plenty of flex space. The heart of the home features a spacious kitchen with ample storage, and a built-in outdoor grill for seamless indoor-outdoor gatherings. Unwind year-round in the four-season porch or enjoy evenings by the outdoor firepit.

This property includes a 3-stall attached garage and an additional 2-stall detached garage, providing abundant space for vehicles, boats, or all your recreational gear. The home's flexible floor plan offers multiple options for office space, guest rooms, or a hobby room.

Set up high, the curb appeal is unmatched with a manicured yard, stucco and stone exterior with patios in both the front and back yard, you will be the envy of the neighborhood!!

Additional Details:

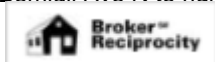
Year Built	1994
Lot Acres	5.97
Lot Dimensions	300x620x595x270x276x260
Garage Stalls	5
School District	31
Taxes	\$2,180
Taxes with Assessments	\$2,180
Tax Year	2025

Additional Features:

Basement: Block, Finished, Full **Fuel:** Electric, Propane **Garage:** 5 **Heat:** Forced Air, Fireplace(s) **Sewer:** Private Sewer **Water:** Private **Air Conditioning:** Central Air

Driving Directions:

Bemidji Ave N to right on Birchmont Beach Rd to right on New Bass Lake Rd to right on Tall Pines Rd to right on the right.



Listed By:
Real Broker, LLC

Affinity Real Estate Inc. participates in the Regional Multiple Listing Service of Minnesota, Inc Broker Reciprocity (sm) program, allowing us to display other broker's listings on our website. All properties are subject to prior sale, change or withdrawal.



Call Affinity Real Estate

218-237-3333

info@affinityrealestate.com



Affinity Real Estate - 600 Park Avenue South - Park Rapids MN 56470



website: www.AffinityRealEstate.com | email: info@affinityrealestate.com | office: 218-237-3333 | fax: 218-237-3377

Affinity
REAL ESTATE INC

\$599,900

MLS 6711224 Residential
6076 Tall Pines Road
Bemidji MN 56601



website: www.AffinityRealEstate.com | email: info@affinityrealestate.com | office: 218-237-3333 | fax: 218-237-3377



\$599,900
 MLS 6711224 Residential
 6076 Tall Pines Road
 Bemidji MN 56601



website: www.AffinityRealEstate.com | email: info@affinityrealestate.com | office: 218-237-3333 | fax: 218-237-3377

Affinity
REAL ESTATE INC

\$599,900
MLS 6711224 Residential
6076 Tall Pines Road
Bemidji MN 56601



website: www.AffinityRealEstate.com | email: info@affinityrealestate.com | office: 218-237-3333 | fax: 218-237-3377

Affinity
REAL ESTATE INC

\$599,900
MLS 6711224 Residential
6076 Tall Pines Road
Bemidji MN 56601



website: www.AffinityRealEstate.com | email: info@affinityrealestate.com | office: 218-237-3333 | fax: 218-237-3377

Affinity
REAL ESTATE INC

\$599,900

MLS 6711224 Residential
6076 Tall Pines Road
Bemidji MN 56601



website: www.AffinityRealEstate.com | email: info@affinityrealestate.com | office: 218-237-3333 | fax: 218-237-3377

Affinity
REAL ESTATE INC

\$599,900
MLS 6711224 Residential
6076 Tall Pines Road
Bemidji MN 56601



website: www.AffinityRealEstate.com | email: info@affinityrealestate.com | office: 218-237-3333 | fax: 218-237-3377

Affinity
REAL ESTATE INC

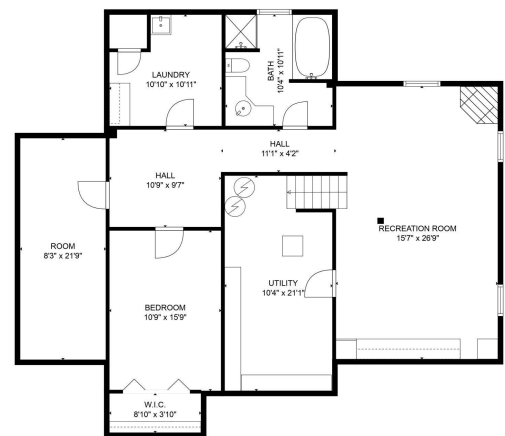
\$599,900
MLS 6711224 Residential
6076 Tall Pines Road
Bemidji MN 56601



website: www.AffinityRealEstate.com | email: info@affinityrealestate.com | office: 218-237-3333 | fax: 218-237-3377

Affinity
REAL ESTATE INC

\$599,900
MLS 6711224 Residential
6076 Tall Pines Road
Bemidji MN 56601

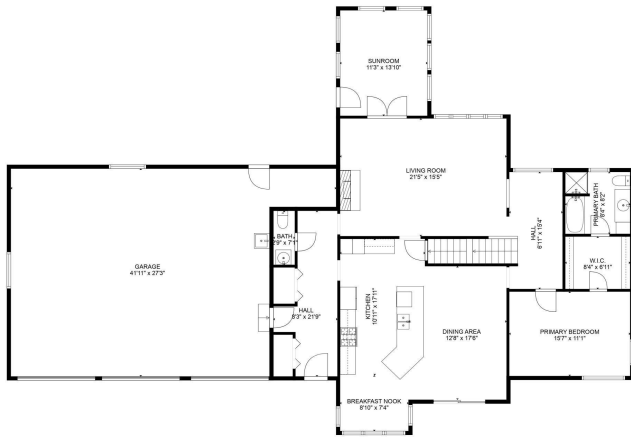


TOTAL: 3291 sq. ft.
 BELOW GROUND: 1235 sq. ft., FLOOR 2: 1598 sq. ft., FLOOR 3: 458 sq. ft.
 EXCLUDED AREAS: UTILITY: 203 sq. ft., GARAGE: 950 sq. ft., OPEN TO BELOW: 281 sq. ft.
 FLOOR PLAN CREATED BY CIRCULAR AIR MEASUREMENTS DEEMED HIGHLY RELIABLE BUT NOT GUARANTEED.

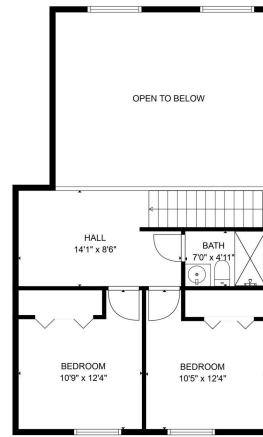
website: www.AffinityRealEstate.com | email: info@affinityrealestate.com | office: 218-237-3333 | fax: 218-237-3377



\$599,900
 MLS 6711224 Residential
 6076 Tall Pines Road
 Bemidji MN 56601



TOTAL: 3291 sq. ft.
 BELOW GROUND: 1235 sq. ft., FLOOR 2: 1598 sq. ft., FLOOR 3: 458 sq. ft.
 EXCLUDED AREAS: UTILITY: 203 sq. ft., GARAGE: 950 sq. ft., OPEN TO BELOW: 281 sq. ft.
 FLOOR PLAN CREATED BY CIRCULAR AIR MEASUREMENTS DEEMED HIGHLY RELIABLE BUT NOT GUARANTEED.



TOTAL: 3291 sq. ft.
 BELOW GROUND: 1235 sq. ft., FLOOR 2: 1598 sq. ft., FLOOR 3: 458 sq. ft.
 EXCLUDED AREAS: UTILITY: 203 sq. ft., GARAGE: 950 sq. ft., OPEN TO BELOW: 281 sq. ft.
 FLOOR PLAN CREATED BY CIRCULAR AIR MEASUREMENTS DEEMED HIGHLY RELIABLE BUT NOT GUARANTEED.



TOTAL: 3291 sq. ft.
 BELOW GROUND: 1235 sq. ft., FLOOR 2: 1598 sq. ft., FLOOR 3: 458 sq. ft.
 EXCLUDED AREAS: UTILITY: 203 sq. ft., GARAGE: 950 sq. ft., OPEN TO BELOW: 281 sq. ft.
 FLOOR PLAN CREATED BY CIRCULAR AIR MEASUREMENTS DEEMED HIGHLY RELIABLE BUT NOT GUARANTEED.

website: www.AffinityRealEstate.com | email: info@affinityrealestate.com | office: 218-237-3333 | fax: 218-237-3377



\$599,900
 MLS 6711224 Residential
 6076 Tall Pines Road
 Bemidji MN 56601