



MLS 6711244 Land

\$179,900

1.72 Acres
Rough Grade

XXX 400th Street
Waubun MN 56589

Status: Active

Description:

Storage Building for Sale – \$179,900. Very well-maintained pole shed built in 2011, measuring 82' x 60' with 17' sidewalls and a 16' x 36' wide opening with double sliding doors. The building includes a 32' x 60' concrete floor area, engineered to support heavy equipment. The lot was professionally prepared by removing black dirt and clay; and replacing it with a substantial base of Class 5 gravel—minimizing rutting during wet seasons. Set on 1.72 acres, the property includes a nicely landscaped road buffer for privacy. It's an ideal space for storing extra equipment, recreational vehicles, or seasonal gear. Located just 2 miles from Waubun and in close proximity to White Earth Lake and Strawberry Lake.

Additional Details:

Lot Acres	1.72
Lot Dimensions	250 x 300
School District	435
Taxes	\$218
Taxes with Assessments	\$218
Tax Year	2025

Additional Features:

Driving Directions:

From Waubun, take US Highway 59 South approximately 2 miles and turn left (East) on 400th Street. Proceed 1 1/4 mile and building will be on left side.



Listed By:
Affinity Real Estate Inc.

Affinity Real Estate Inc. participates in the Regional Multiple Listing Service of Minnesota, Inc Broker Reciprocity (sm) program, allowing us to display other broker's listings on our website. All properties are subject to prior sale, change or withdrawal.



Call Affinity Real Estate

218-237-3333

info@affinityrealestate.com



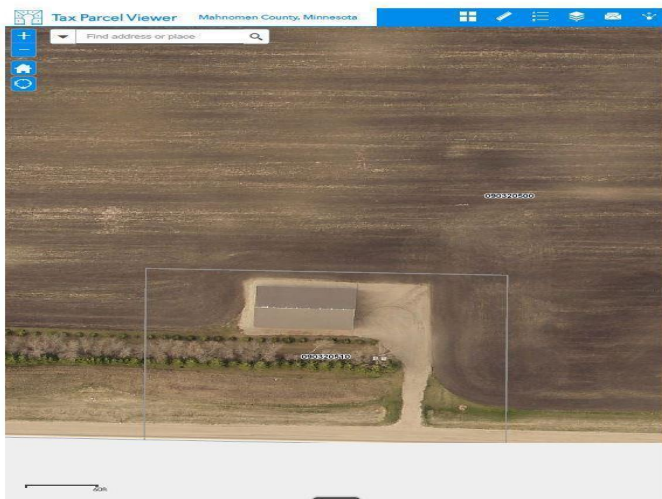
Affinity Real Estate - 600 Park Avenue South - Park Rapids MN 56470



website: www.AffinityRealEstate.com | email: info@affinityrealestate.com | office: 218-237-3333 | fax: 218-237-3377



\$179,900
 MLS 6711244 Land
 XXX 400th Street
 Waubun MN 56589



website: www.AffinityRealEstate.com | email: info@affinityrealestate.com | office: 218-237-3333 | fax: 218-237-3377



\$179,900
 MLS 6711244 Land
 XXX 400th Street
 Waubun MN 56589