



MLS 6711271 Lake Home

**\$450,000**

1,536 sq ft  
4 bedrooms  
2 baths

39710 Bald Eagle Haven Road  
Waubun MN 56589

Waterfront: Tulaby

Status: Pending

#### Description:

Dreaming of your perfect lake retreat? This Lake Tulaby home offers 150 feet of beautiful shoreline on nearly an acre of land. Enjoy breathtaking panoramic lake views and spectacular sunsets from the expansive deck and patio, perfect for entertaining or relaxing. Inside, you'll find a spacious 4 bedroom, 2 bath layout designed for comfortable living. Two lower-level bedrooms seamlessly integrate with the family room, creating a unique and versatile space ideal for guests or a fun bunkhouse setup. Plus, furnishings, a pontoon, and a lift are negotiable, making this your turnkey lake home opportunity.

#### Additional Details:

Year Built	1974
Lot Acres	0.99
Lot Dimensions	150x272x195x259
Garage Stalls	3
School District	435
Taxes	\$2,384
Taxes with Assessments	\$2,384
Tax Year	2025

#### Additional Features:

**Basement:** Brick/Mortar, Egress Window(s), Finished, Full, Walkout **Fuel:** Electric **Garage:** 3 **Heat:** Baseboard, Radiant **Sewer:** Private Sewer, Tank with Drainage Field **Water:** Submersible - 4 Inch, Artesian, Drilled, Private, Well **Air Conditioning:** Wall Unit(s)

#### Driving Directions:

In Waubun Hwy 59 and Hwy 113 go East on Hwy 113 for 17.3 miles to right on Bald Eagle Haven Rd, in .8 miles you will come to home.



Listed By:  
Dane Arthur Real Estate Agency-Crosslake

Affinity Real Estate Inc. participates in the Regional Multiple Listing Service of Minnesota, Inc Broker Reciprocity (sm) program, allowing us to display other broker's listings on our website. All properties are subject to prior sale, change or withdrawal.



Call Affinity Real Estate

**218-237-3333**

[info@affinityrealestate.com](mailto:info@affinityrealestate.com)



Affinity Real Estate - 600 Park Avenue South - Park Rapids MN 56470





website: [www.AffinityRealEstate.com](http://www.AffinityRealEstate.com) | email: [info@affinityrealestate.com](mailto:info@affinityrealestate.com) | office: 218-237-3333 | fax: 218-237-3377

**Affinity**  
REAL ESTATE INC

**\$450,000**  
MLS 6711271 Lake Home  
39710 Bald Eagle Haven  
Road  
Waubun MN 56589





website: [www.AffinityRealEstate.com](http://www.AffinityRealEstate.com) | email: [info@affinityrealestate.com](mailto:info@affinityrealestate.com) | office: 218-237-3333 | fax: 218-237-3377



**\$450,000**  
MLS 6711271 Lake Home  
39710 Bald Eagle Haven  
Road  
Waubun MN 56589





website: [www.AffinityRealEstate.com](http://www.AffinityRealEstate.com) | email: [info@affinityrealestate.com](mailto:info@affinityrealestate.com) | office: 218-237-3333 | fax: 218-237-3377



**\$450,000**  
 MLS 6711271 Lake Home  
 39710 Bald Eagle Haven  
 Road  
 Waubun MN 56589





website: [www.AffinityRealEstate.com](http://www.AffinityRealEstate.com) | email: [info@affinityrealestate.com](mailto:info@affinityrealestate.com) | office: 218-237-3333 | fax: 218-237-3377

**Affinity**  
REAL ESTATE INC

**\$450,000**  
MLS 6711271 Lake Home  
39710 Bald Eagle Haven  
Road  
Waubun MN 56589



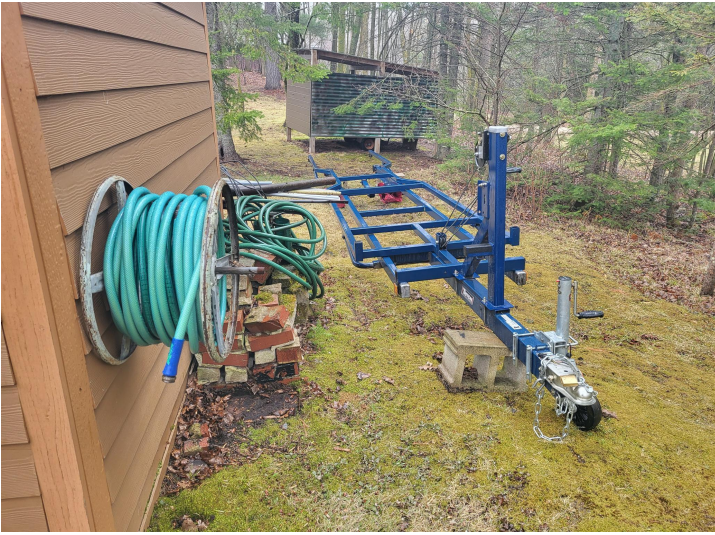


website: [www.AffinityRealEstate.com](http://www.AffinityRealEstate.com) | email: [info@affinityrealestate.com](mailto:info@affinityrealestate.com) | office: 218-237-3333 | fax: 218-237-3377

**Affinity**  
REAL ESTATE INC

**\$450,000**  
MLS 6711271 Lake Home  
39710 Bald Eagle Haven  
Road  
Waubun MN 56589





website: [www.AffinityRealEstate.com](http://www.AffinityRealEstate.com) | email: [info@affinityrealestate.com](mailto:info@affinityrealestate.com) | office: 218-237-3333 | fax: 218-237-3377



**\$450,000**  
 MLS 6711271 Lake Home  
 39710 Bald Eagle Haven  
 Road  
 Waubun MN 56589





website: [www.AffinityRealEstate.com](http://www.AffinityRealEstate.com) | email: [info@affinityrealestate.com](mailto:info@affinityrealestate.com) | office: 218-237-3333 | fax:218-237-3377



**\$450,000**

MLS 6711271 Lake Home  
39710 Bald Eagle Haven  
Road  
Waubun MN 56589



website: [www.AffinityRealEstate.com](http://www.AffinityRealEstate.com) | email: [info@affinityrealestate.com](mailto:info@affinityrealestate.com) | office: 218-237-3333 | fax:218-237-3377



**\$450,000**

MLS 6711271 Lake Home  
39710 Bald Eagle Haven  
Road  
Waubun MN 56589