



MLS 6711275 Land

\$169,900

1.43 Acres
Subdivided

LOT 7 Retriever Road
Crosslake MN 56442

Status: Active



Description:

This lot is perfect for your business or personal storage needs. Hard to find 1.43 acre limited commercial with mixed use lot on a paved private cul-de-sac road in the heart of Crosslake with 50% impervious coverage. The lot is partially cleared and ready for your new building. Electricity and natural gas have been brought into the development and are available at the road.

Additional Details:

Lot Acres	1.43
Lot Dimensions	40x19x88x564x104x482x225x29
School District	186
Taxes	\$548
Taxes with Assessments	\$548
Tax Year	2025

Additional Features:

Driving Directions:

From Crosslake, go South on County Road 3 to a left on Black Bear Path, go 1/2 block to a left on Northern Terrace. Go to the end of the road and follow signs to Retriever Road.



Listed By:
Edina Realty, Inc.

Affinity Real Estate Inc. participates in the Regional Multiple Listing Service of Minnesota, Inc Broker Reciprocity (sm) program, allowing us to display other broker's listings on our website. All properties are subject to prior sale, change or withdrawal.



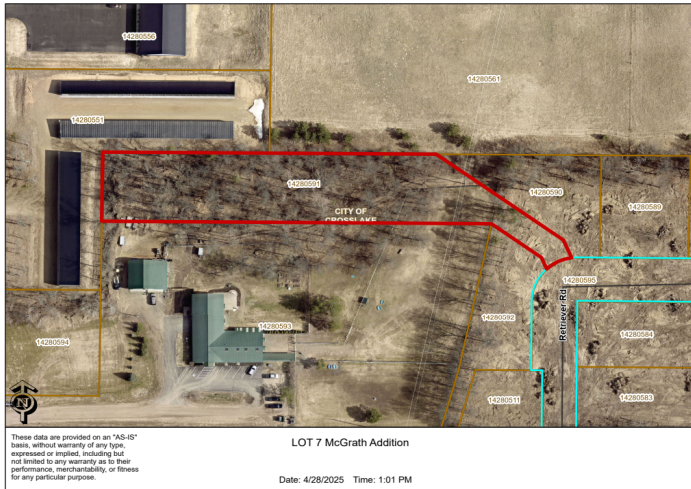
Call Affinity Real Estate

218-237-3333

info@affinityrealestate.com



Affinity Real Estate - 600 Park Avenue South - Park Rapids MN 56470



website: www.AffinityRealEstate.com | email: info@affinityrealestate.com | office: 218-237-3333 | fax: 218-237-3377



\$169,900
 MLS 6711275 Land
 LOT 7 Retriever Road
 Crosslake MN 56442