



MLS 6711713 Residential

\$489,900

2,656 sq ft
4 bedrooms
3 baths

14898 Lynndale Lane
Baxter MN 56425

Status: Active

Description:

This 4 bedroom, 3 bathroom home offers the perfect blend of classic charm, modern updates and functionality. The spacious front porch and beautifully landscaped yard provide inviting curb appeal. Step inside to an open and airy main level filled with natural light and spanning windows. The heart of the home is the updated kitchen, complete with rich wood cabinetry, crisp white quartz countertops, updated lighting, open shelving and a stylish breakfast bar. Relax in the cozy living room featuring a custom fireplace and easy access to the 800 square foot deck and spacious backyard with custom firepit area. The formal dining room and family room offer added gathering space on the main level. Upstairs you'll find 4 generously sized bedrooms including a beautiful primary suite complete with updated bathroom and a walk-in closet. The fully unfinished basement provides plenty of space for storage, and the opportunity to add more living space finished to your liking! This home is situated on a level .94 acre lot with mature trees, two storage sheds and plenty of space to play! Don't miss the opportunity to make this home yours!

Additional Details:

Year Built	1995
Lot Acres	0.94
Lot Dimensions	175x195x140x280
Garage Stalls	2
School District	181
Taxes	\$5,031
Taxes with Assessments	\$5,056
Tax Year	2025

Additional Features:

Basement: Full, Unfinished **Fuel:** Electric, Natural Gas **Garage:** 2 **Heat:** Forced Air **Sewer:** Private Sewer, Septic System Compliant - Yes, Tank with Drainage Field **Water:** Drilled, Private, Well **Air Conditioning:** Central Air

Driving Directions:

From 371 N, turn left onto Wolda Road, turn left onto Lynndale Lane, property on the left.



Listed By:
RE/MAX Results - Nisswa

Affinity Real Estate Inc. participates in the Regional Multiple Listing Service of Minnesota, Inc Broker Reciprocity (sm) program, allowing us to display other broker's listings on our website. All properties are subject to prior sale, change or withdrawal.



Call Affinity Real Estate

218-237-3333

info@affinityrealestate.com



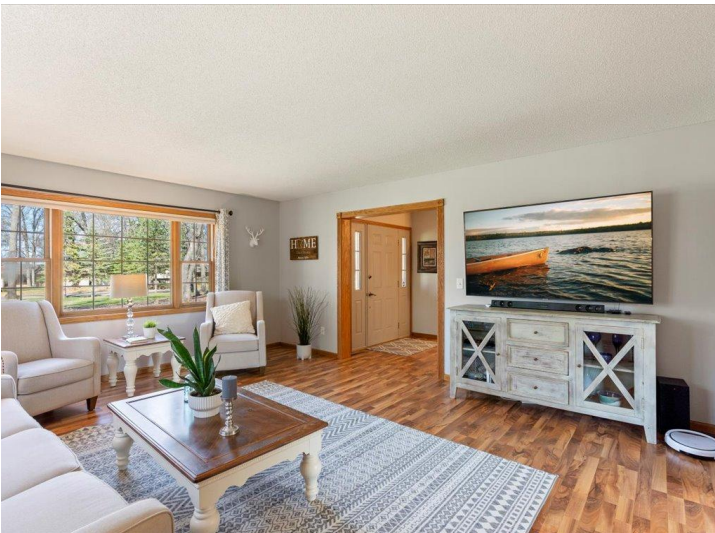
Affinity Real Estate - 600 Park Avenue South - Park Rapids MN 56470



website: www.AffinityRealEstate.com | email: info@affinityrealestate.com | office: 218-237-3333 | fax: 218-237-3377

Affinity
REAL ESTATE INC

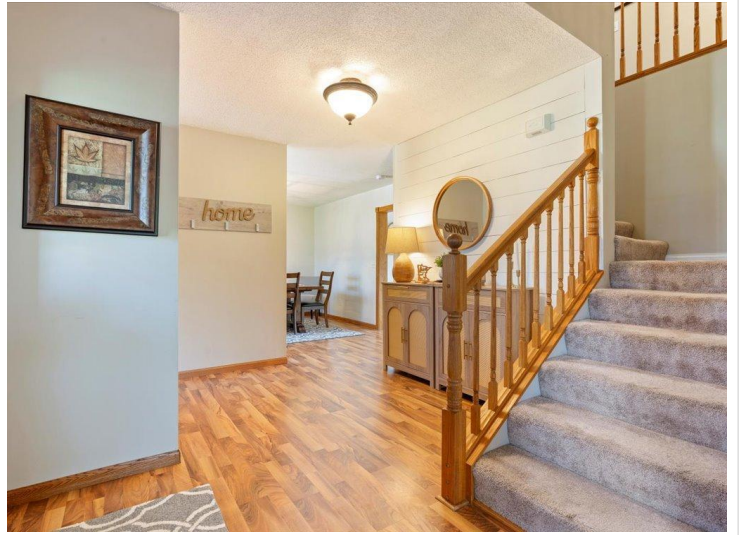
\$489,900
MLS 6711713 Residential
14898 Lynndale Lane
Baxter MN 56425



website: www.AffinityRealEstate.com | email: info@affinityrealestate.com | office: 218-237-3333 | fax: 218-237-3377

Affinity
REAL ESTATE INC

\$489,900
MLS 6711713 Residential
14898 Lynndale Lane
Baxter MN 56425



website: www.AffinityRealEstate.com | email: info@affinityrealestate.com | office: 218-237-3333 | fax: 218-237-3377

Affinity
REAL ESTATE INC

\$489,900
MLS 6711713 Residential
14898 Lynndale Lane
Baxter MN 56425



website: www.AffinityRealEstate.com | email: info@affinityrealestate.com | office: 218-237-3333 | fax: 218-237-3377

Affinity
REAL ESTATE INC

\$489,900
MLS 6711713 Residential
14898 Lynndale Lane
Baxter MN 56425



website: www.AffinityRealEstate.com | email: info@affinityrealestate.com | office: 218-237-3333 | fax: 218-237-3377

Affinity
REAL ESTATE INC

\$489,900
MLS 6711713 Residential
14898 Lynndale Lane
Baxter MN 56425



website: www.AffinityRealEstate.com | email: info@affinityrealestate.com | office: 218-237-3333 | fax:218-237-3377



\$489,900
MLS 6711713 Residential
14898 Lynndale Lane
Baxter MN 56425