



MLS 6711770 Residential

\$279,900

1,086 sq ft
2 bedrooms
2 baths

13145 Berrywood Drive
Baxter MN 56425

Status: Active

Description:

Lakes area twin homes maintenance free community located in Baxter! Don't worry about snow removal or mowing! Irrigation system included as well as seeded yard!! This home contains master en suite with a second bedroom for guests or use as an office. Open concept home with 9' ceilings throughout the entire home!! Stainless steel appliances and granite countertops in the Kitchen. Spacious dining room and living room that flow beautifully together. Other floor plans, developments, and lots available! Price subject to change**Taxes are based on New Construction Lot Price

Additional Details:


Year Built	2024
Lot Acres	0.1
Lot Dimensions	95x48
Garage Stalls	2
School District	181
Taxes	\$94
Taxes with Assessments	\$94
Tax Year	2023

Additional Features:

Basement: Slab **Fuel:** Natural Gas **Garage:** 2 **Heat:** Forced Air **Sewer:** City Sewer/Connected **Water:** City Water/Connected **Air Conditioning:** Central Air

Driving Directions:

From 371|210 go south on 371 to College rd turn left to Berrywood turn right to property on right

 Listed By:
Counselor Realty Brainerd Lakes

Affinity Real Estate Inc. participates in the Regional Multiple Listing Service of Minnesota, Inc Broker Reciprocity (sm) program, allowing us to display other broker's listings on our website. All properties are subject to prior sale, change or withdrawal.

 **Call Affinity Real Estate**
218-237-3333
info@affinityrealestate.com

Affinity Real Estate - 600 Park Avenue South - Park Rapids MN 56470



website: www.AffinityRealEstate.com | email: info@affinityrealestate.com | office: 218-237-3333 | fax: 218-237-3377

Affinity
REAL ESTATE INC

\$279,900
MLS 6711770 Residential
13145 Berrywood Drive
Baxter MN 56425



website: www.AffinityRealEstate.com | email: info@affinityrealestate.com | office: 218-237-3333 | fax:218-237-3377

Affinity
REAL ESTATE INC

\$279,900
MLS 6711770 Residential
13145 Berrywood Drive
Baxter MN 56425



website: www.AffinityRealEstate.com | email: info@affinityrealestate.com | office: 218-237-3333 | fax: 218-237-3377

Affinity
REAL ESTATE INC

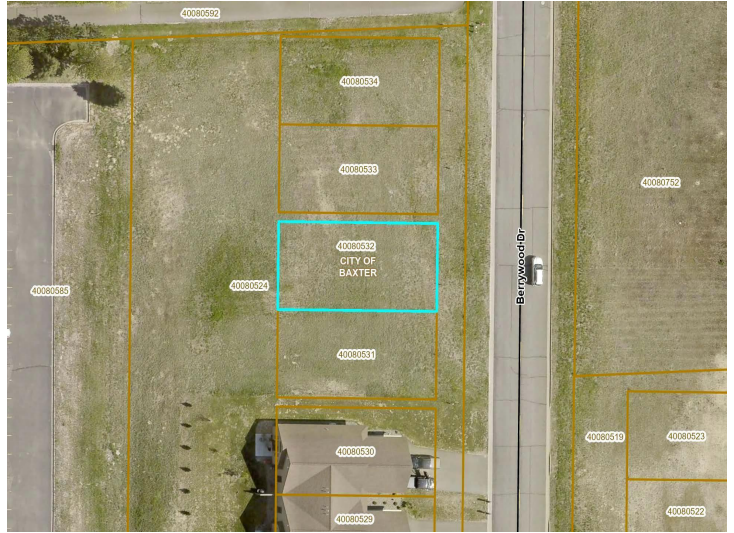
\$279,900
MLS 6711770 Residential
13145 Berrywood Drive
Baxter MN 56425



website: www.AffinityRealEstate.com | email: info@affinityrealestate.com | office: 218-237-3333 | fax:218-237-3377

Affinity
REAL ESTATE INC

\$279,900
MLS 6711770 Residential
13145 Berrywood Drive
Baxter MN 56425



website: www.AffinityRealEstate.com | email: info@affinityrealestate.com | office: 218-237-3333 | fax:218-237-3377



\$279,900
MLS 6711770 Residential
13145 Berrywood Drive
Baxter MN 56425



website: www.AffinityRealEstate.com | email: info@affinityrealestate.com | office: 218-237-3333 | fax:218-237-3377



\$279,900
MLS 6711770 Residential
13145 Berrywood Drive
Baxter MN 56425