



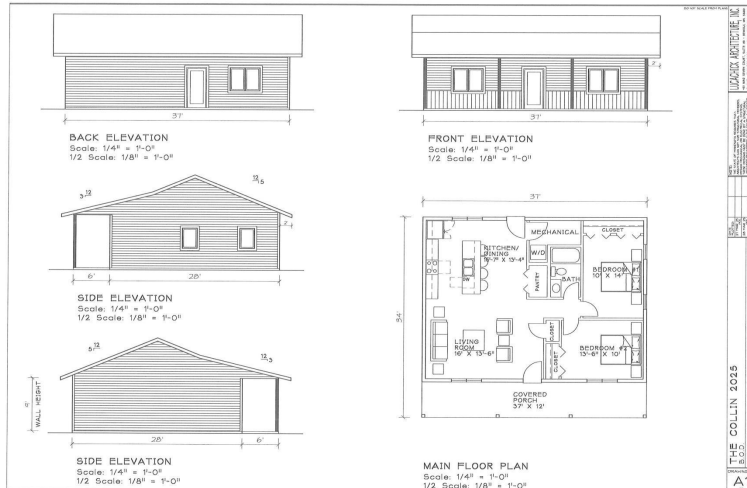
MLS 6711801 Residential

**\$219,900**

1,036 sq ft  
2 bedrooms  
1 baths

Lot 11 Open Meadows Court  
Bemidji MN 56601

Status: Active



#### Description:

Step into easy, luxurious living with this beautifully designed new construction home, tailored for today's lifestyle. Featuring 2 spacious bedrooms and a well-appointed bathroom, every detail reflects quality—from solid core doors and in-floor heating to energy-efficient Marvin Windows and durable LP SmartSide siding.

The open-concept layout offers a bright and welcoming space, highlighted by a large center island with seating for four. Generous closet space throughout ensures plenty of room for storage without sacrificing elegance.

Tucked in a peaceful neighborhood just minutes from Bemidji, you'll enjoy the best of both worlds: a quiet retreat with convenient access to shopping, dining, and local amenities. Make it truly yours with customizable options for cabinetry, paint, flooring, doors, and siding.

Garage packages—both attached and detached—are also available. Ask us today about Down Payment Assistance and start your journey to owning this stunning home!

#### Additional Details:

Year Built	2025
Lot Acres	1.04
Lot Dimensions	294x152
School District	31
Taxes	\$168
Taxes with Assessments	\$168
Tax Year	2025

#### Additional Features:

**Basement:** None **Fuel:** Propane **Heat:** Boiler, Heat Pump, Radiant Floor **Sewer:** Septic System Compliant - Yes **Water:** Submersible - 4 Inch **Air Conditioning:** Heat Pump

#### Driving Directions:

Little Norway Ave SE to Open Meadows Court SE, follow to the end.



Listed By:  
Lake-N-Woods Realty

Affinity Real Estate Inc. participates in the Regional Multiple Listing Service of Minnesota, Inc Broker Reciprocity (sm) program, allowing us to display other broker's listings on our website. All properties are subject to prior sale, change or withdrawal.



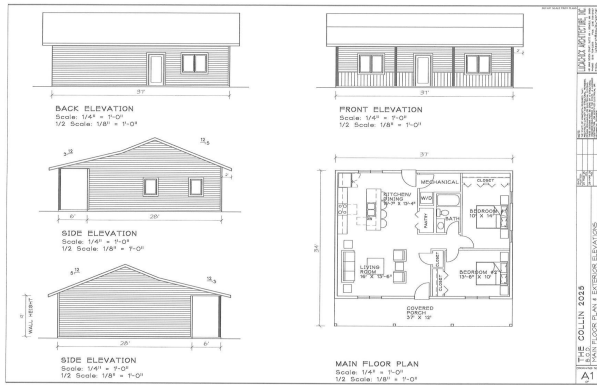
Call Affinity Real Estate

**218-237-3333**

[info@affinityrealestate.com](mailto:info@affinityrealestate.com)



Affinity Real Estate - 600 Park Avenue South - Park Rapids MN 56470



website: [www.AffinityRealEstate.com](http://www.AffinityRealEstate.com) | email: [info@affinityrealestate.com](mailto:info@affinityrealestate.com) | office: 218-237-3333 | fax: 218-237-3377



**\$219,900**  
MLS 6711801 Residential  
Lot 11 Open Meadows Court  
Bemidji MN 56601





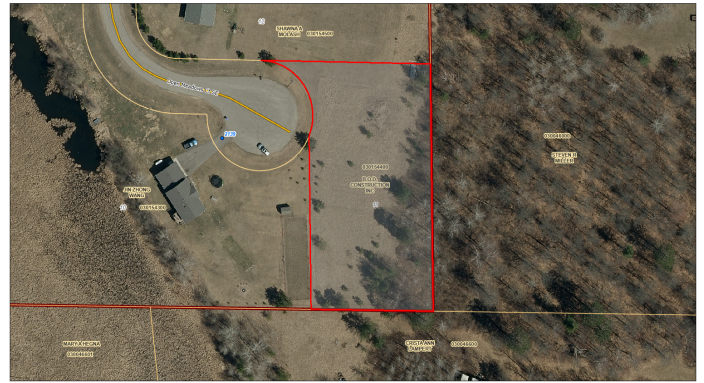
website: [www.AffinityRealEstate.com](http://www.AffinityRealEstate.com) | email: [info@affinityrealestate.com](mailto:info@affinityrealestate.com) | office: 218-237-3333 | fax: 218-237-3377



**\$219,900**  
MLS 6711801 Residential  
Lot 11 Open Meadows Court  
Bemidji MN 56601



030154400



April 24, 2025

1:960  
0 0.01 0.02 0.03 mi  
0 0.01 0.03 0.05 km  
Beltrami County

Soil County Property Information

website: [www.AffinityRealEstate.com](http://www.AffinityRealEstate.com) | email: [info@affinityrealestate.com](mailto:info@affinityrealestate.com) | office: 218-237-3333 | fax: 218-237-3377



**\$219,900**  
MLS 6711801 Residential  
Lot 11 Open Meadows Court  
Bemidji MN 56601