

MLS 6712083 Land

**\$75,000**

4.32 Acres  
Raw Land

XXX State 371  
Walker MN 56484

Status: Active

**Description:**

A perfect opportunity for that 'Up North' locations building site or commercial dream. Priced two sell.

**Additional Details:**

Lot Acres	4.32
Lot Dimensions	150x1256
School District	113
Taxes	\$110
Taxes with Assessments	\$110
Tax Year	2024

**Additional Features:**

**Driving Directions:**

From the Y junction go south about 1/2-mile sign on west side



Listed By:  
Rusty's Up North Realty

Affinity Real Estate Inc. participates in the Regional Multiple Listing Service of Minnesota, Inc Broker Reciprocity (sm) program, allowing us to display other broker's listings on our website. All properties are subject to prior sale, change or withdrawal.



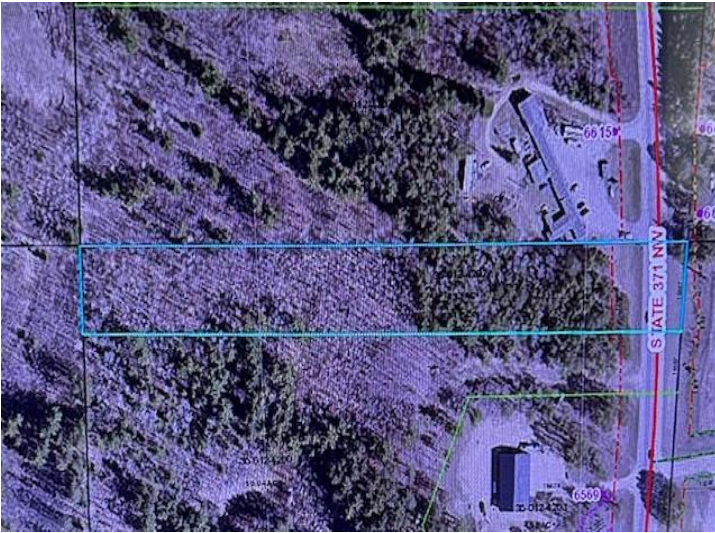
Call Affinity Real Estate

**218-237-3333**

[info@affinityrealestate.com](mailto:info@affinityrealestate.com)



Affinity Real Estate - 600 Park Avenue South - Park Rapids MN 56470



website: [www.AffinityRealEstate.com](http://www.AffinityRealEstate.com) | email: [info@affinityrealestate.com](mailto:info@affinityrealestate.com) | office: 218-237-3333 | fax:218-237-3377



**\$75,000**  
MLS 6712083 Land  
XXX State 371  
Walker MN 56484