

MLS 6712111 Land

\$1,025,000

41.08 Acres
Raw Land

41 AC Mesabi Road
Baxter MN 56425

Status: Active

Description:

Prime 40-acre development opportunity in the heart of Baxter. Discover an exceptional opportunity to shape the future of residential living in the thriving Brainerd/Baxter area. This expansive 40-acre parcel, ideally situated just off Forestview Drive, offers an outstanding canvas for both low- and high-density residential development. Surrounded by mature woodlands, the property provides a peaceful, private setting while remaining remarkably close to everything Baxter has to offer. Residents will enjoy effortless access to Hwy 371 and be just minutes from top-rated schools, churches, shopping centers, restaurants, and endless recreational amenities. Whether you envision a thoughtfully planned neighborhood or a blend of housing styles, this land offers the space, location, and natural beauty to bring your vision to life. Don't miss this rare chance to develop in one of central Minnesota's most desirable and fast-growing communities.

Additional Details:

Lot Acres	41.08
Lot Dimensions	Irregular
School District	181
Taxes	\$2,322
Taxes with Assessments	\$2,322
Tax Year	2025

Additional Features:

Driving Directions:

From the Baxter Hwy 210/371 intersection - South on Hwy 371 - East on CR 48 (Highland Scenic Road) - South on Forestview Drive - North on Fiber Drive - Property is on the North where Fiber Drive ends, and also on the North and South sides of Mesabi Road



Listed By:
Close-Converse Commercial Prop

Affinity Real Estate Inc. participates in the Regional Multiple Listing Service of Minnesota, Inc Broker Reciprocity (sm) program, allowing us to display other broker's listings on our website. All properties are subject to prior sale, change or withdrawal.



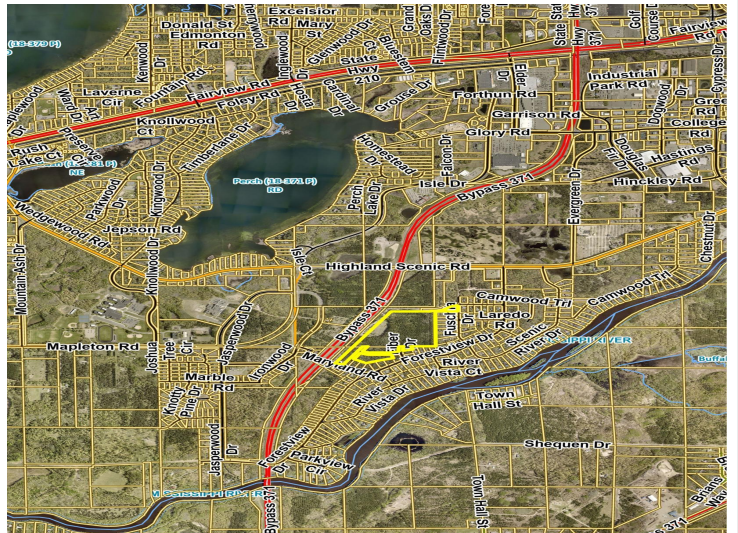
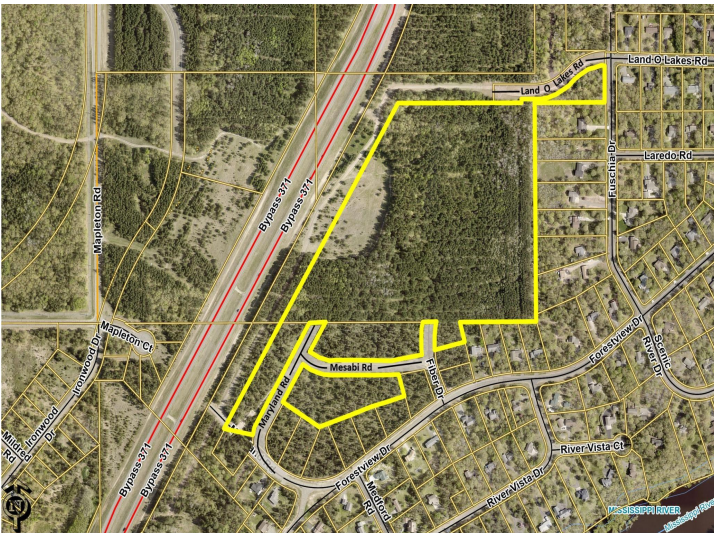
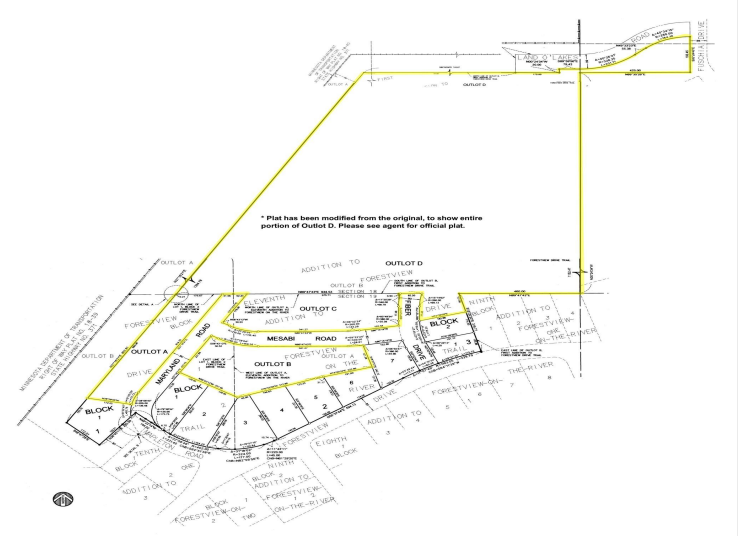
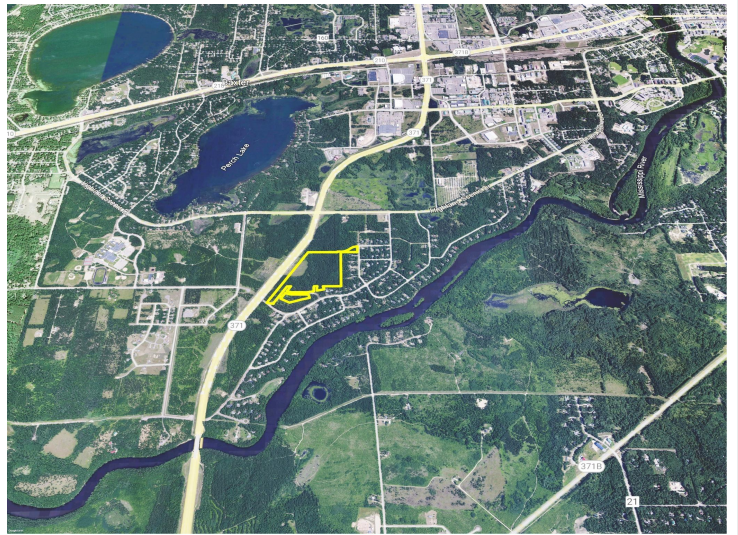
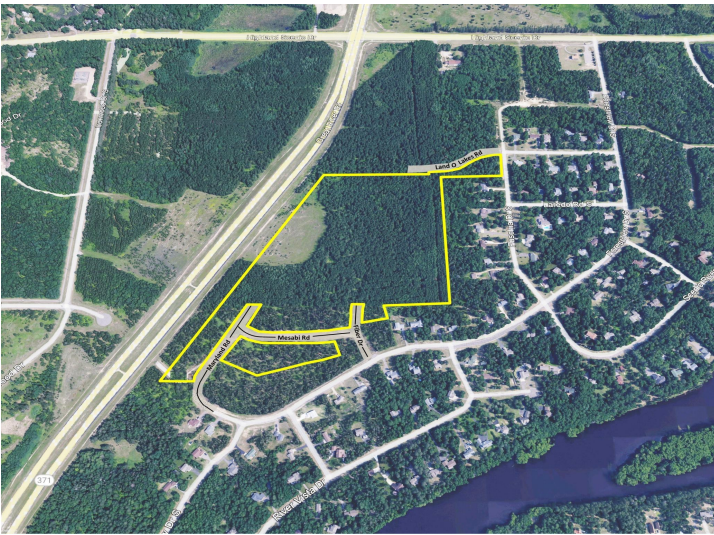
Call Affinity Real Estate

218-237-3333

info@affinityrealestate.com



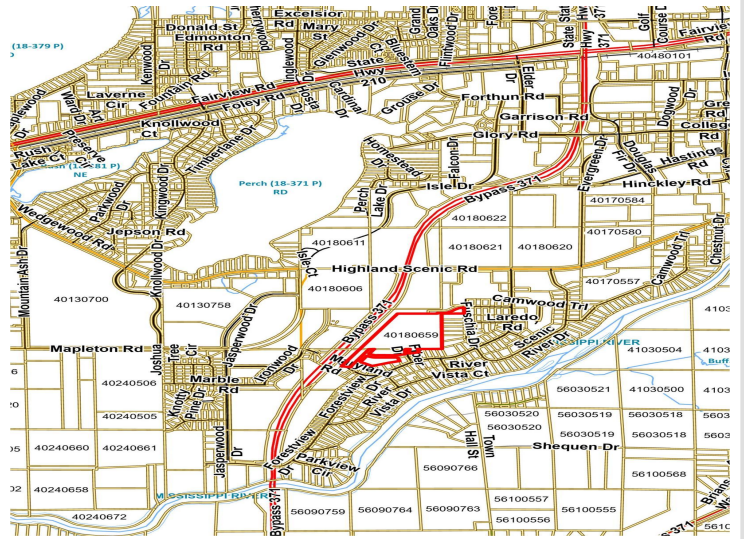
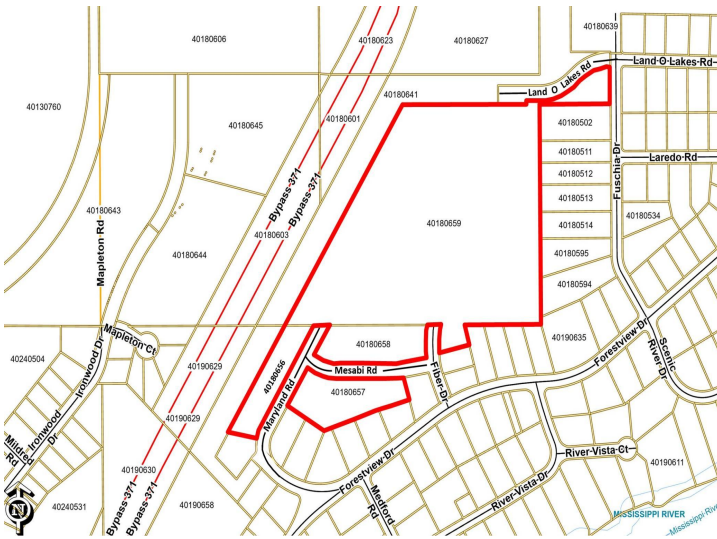
Affinity Real Estate - 600 Park Avenue South - Park Rapids MN 56470



website: www.AffinityRealEstate.com | email: info@affinityrealestate.com | office: 218-237-3333 | fax: 218-237-3377



\$1,025,000
 MLS 6712111 Land
 41 AC Mesabi Road
 Baxter MN 56425



website: www.AffinityRealEstate.com | email: info@affinityrealestate.com | office: 218-237-3333 | fax: 218-237-3377



\$1,025,000
 MLS 6712111 Land
 41 AC Mesabi Road
 Baxter MN 56425