



MLS 6712224 Residential

\$369,900

2,886 sq ft
4 bedrooms
3 baths

16201 Co Hwy 15
Audubon MN 56511

Status: Active

Description:

Nestled on a picturesque 3-acre lot, this delightful rural home offers the perfect sanctuary for relaxation and enjoyment. Boasting 3 bedrooms and 3 bathrooms, it seamlessly combines comfort with practicality. At the heart of the home is a spacious living area that seamlessly transitions to an outdoor patio, ideal for entertaining or simply enjoying the peaceful surroundings.

With four garage stalls, you'll find plenty of room for vehicles and storage, while the beautifully landscaped property adds charm and curb appeal. Whether you're indulging in the privacy of your acreage or exploring the natural beauty that envelops your home, this property promises a lifestyle of relaxation and contentment.

Additional Details:

Year Built	1994
Lot Acres	3
Lot Dimensions	629 x 155
Garage Stalls	4
School District	2889
Taxes	\$2,184
Taxes with Assessments	\$2,184
Tax Year	2025

Additional Features:

Basement: Egress Window(s), Finished, Walkout **Fuel:** Oil **Garage:** 4 **Heat:** Forced Air **Sewer:** Private Sewer, Septic System Compliant - Yes
Water: Well **Air Conditioning:** Central Air

Driving Directions:



Listed By:
Berkshire Hathaway HomeServices Premier
Property

Affinity Real Estate Inc. participates in the Regional Multiple Listing Service of Minnesota, Inc Broker Reciprocity (sm) program, allowing us to display other broker's listings on our website. All properties are subject to prior sale, change or withdrawal.



Call Affinity Real Estate

218-237-3333

info@affinityrealestate.com



Affinity Real Estate - 600 Park Avenue South - Park Rapids MN 56470



website: www.AffinityRealEstate.com | email: info@affinityrealestate.com | office: 218-237-3333 | fax: 218-237-3377

Affinity
REAL ESTATE INC

\$369,900
MLS 6712224 Residential
16201 Co Hwy 15
Audubon MN 56511



website: www.AffinityRealEstate.com | email: info@affinityrealestate.com | office: 218-237-3333 | fax: 218-237-3377

Affinity
REAL ESTATE INC

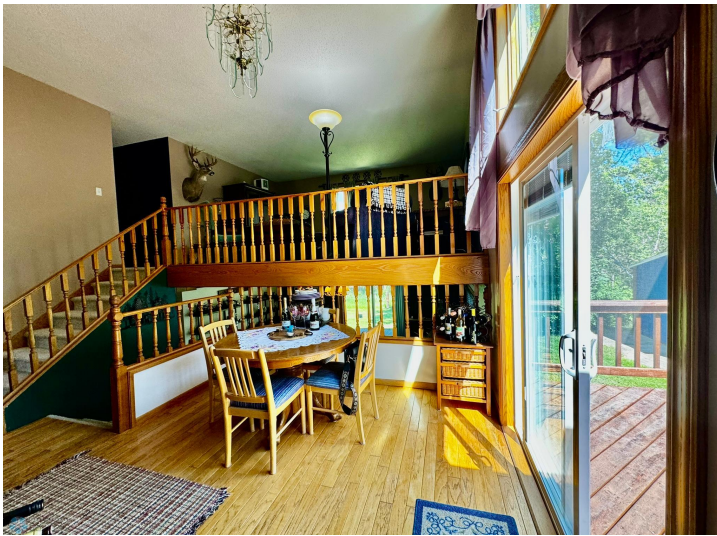
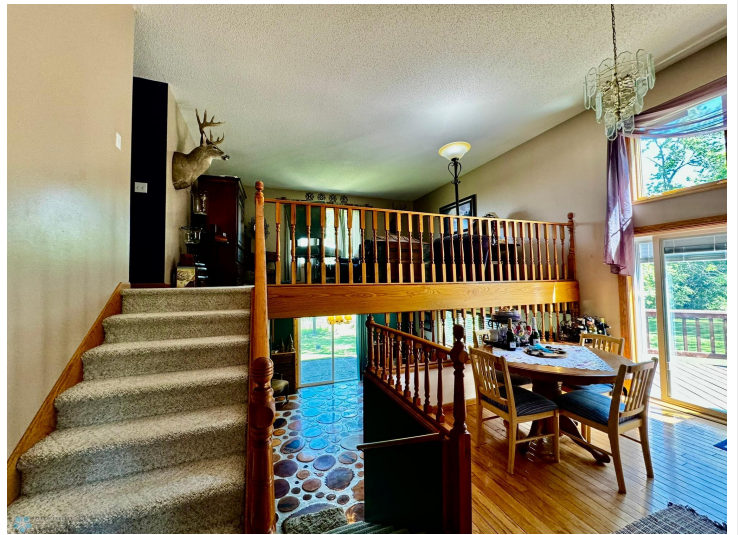
\$369,900
MLS 6712224 Residential
16201 Co Hwy 15
Audubon MN 56511



website: www.AffinityRealEstate.com | email: info@affinityrealestate.com | office: 218-237-3333 | fax: 218-237-3377

Affinity
REAL ESTATE INC

\$369,900
MLS 6712224 Residential
16201 Co Hwy 15
Audubon MN 56511



website: www.AffinityRealEstate.com | email: info@affinityrealestate.com | office: 218-237-3333 | fax: 218-237-3377

Affinity
REAL ESTATE INC

\$369,900
MLS 6712224 Residential
16201 Co Hwy 15
Audubon MN 56511



website: www.AffinityRealEstate.com | email: info@affinityrealestate.com | office: 218-237-3333 | fax: 218-237-3377

Affinity
REAL ESTATE INC

\$369,900
MLS 6712224 Residential
16201 Co Hwy 15
Audubon MN 56511



website: www.AffinityRealEstate.com | email: info@affinityrealestate.com | office: 218-237-3333 | fax: 218-237-3377

Affinity
REAL ESTATE INC

\$369,900
MLS 6712224 Residential
16201 Co Hwy 15
Audubon MN 56511



website: www.AffinityRealEstate.com | email: info@affinityrealestate.com | office: 218-237-3333 | fax: 218-237-3377



\$369,900
MLS 6712224 Residential
16201 Co Hwy 15
Audubon MN 56511