



MLS 6712309 Residential

\$379,900

1,664 sq ft
2 bedrooms
2 baths

10098 Pin Oak Lane
Brainerd MN 56401

Status: Pending

Description:

This Home features a maintenance-free vinyl exterior, main floor living, private primary suite with w/walk-in closet, bonus/flex room can be used as a 3rd bedroom on the main level, This home was built with 36in doors in case the need for wheel chair access, 2-stall attached insulated garage, private 2.5-acre setting with room for an additional garage, paved driveway, close to all of the amenities of the Brainerd Lakes Area.

Additional Details:

Year Built	2016
Lot Acres	2.5
Lot Dimensions	311x305x397x343
Garage Stalls	2
School District	181
Taxes	\$1,776
Taxes with Assessments	\$1,776
Tax Year	2024

Additional Features:

Fuel: Natural Gas **Heat:** Forced Air

Driving Directions:

North on County Rd 3 to West on County Rd 49 (Wise Rd) to North on Smith Road to East on Pin Oak Lane to property on the Left. Or North on NW 4th street to left on Beaver Dam Rd to East on Wise Rd to North on Smith Rd to East on Pin Oak Ln to sign on left.



Listed By:
Keller Williams Realty Professionals

Affinity Real Estate Inc. participates in the Regional Multiple Listing Service of Minnesota, Inc Broker Reciprocity (sm) program, allowing us to display other broker's listings on our website. All properties are subject to prior sale, change or withdrawal.



Call Affinity Real Estate

218-237-3333

info@affinityrealestate.com



Affinity Real Estate - 600 Park Avenue South - Park Rapids MN 56470



website: www.AffinityRealEstate.com | email: info@affinityrealestate.com | office: 218-237-3333 | fax: 218-237-3377

Affinity
REAL ESTATE INC

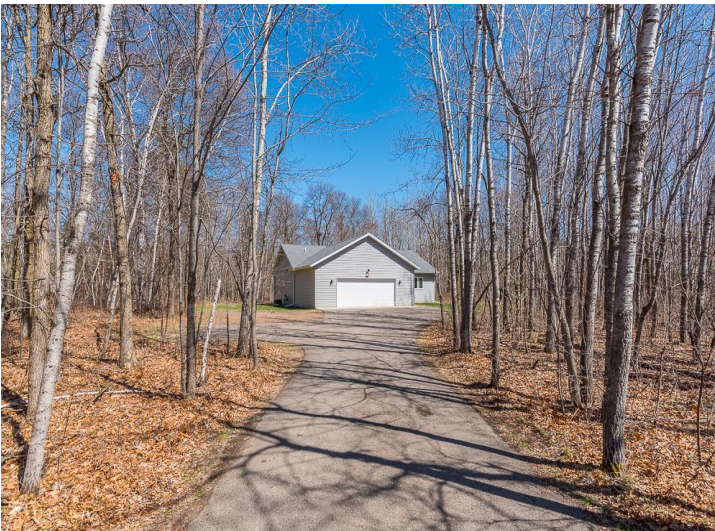
\$379,900
MLS 6712309 Residential
10098 Pin Oak Lane
Brainerd MN 56401



website: www.AffinityRealEstate.com | email: info@affinityrealestate.com | office: 218-237-3333 | fax: 218-237-3377

Affinity
REAL ESTATE INC

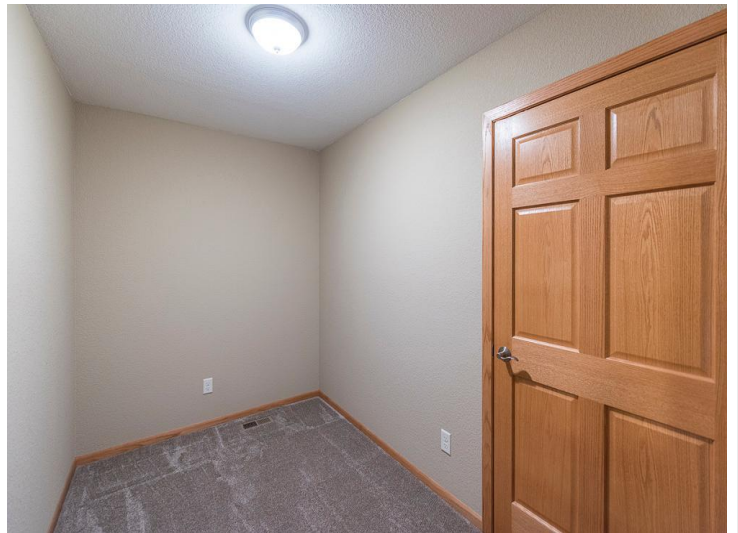
\$379,900
MLS 6712309 Residential
10098 Pin Oak Lane
Brainerd MN 56401



website: www.AffinityRealEstate.com | email: info@affinityrealestate.com | office: 218-237-3333 | fax: 218-237-3377



\$379,900
 MLS 6712309 Residential
 10098 Pin Oak Lane
 Brainerd MN 56401



website: www.AffinityRealEstate.com | email: info@affinityrealestate.com | office: 218-237-3333 | fax: 218-237-3377



\$379,900
 MLS 6712309 Residential
 10098 Pin Oak Lane
 Brainerd MN 56401



website: www.AffinityRealEstate.com | email: info@affinityrealestate.com | office: 218-237-3333 | fax: 218-237-3377

Affinity
REAL ESTATE INC

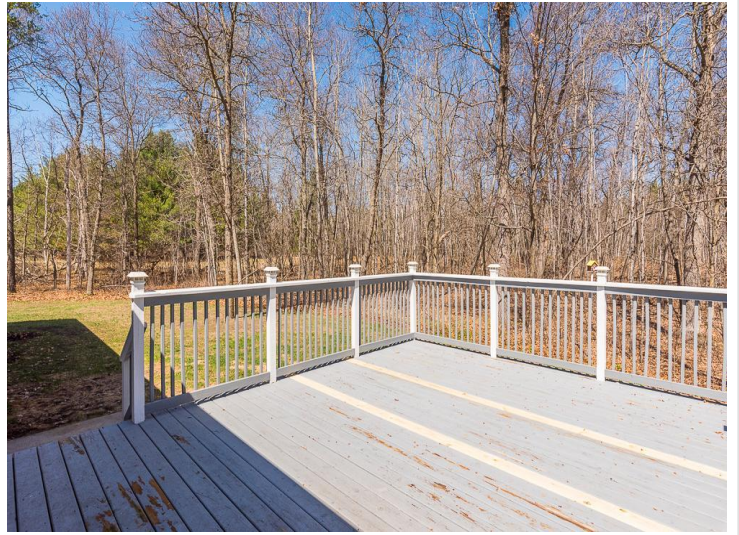
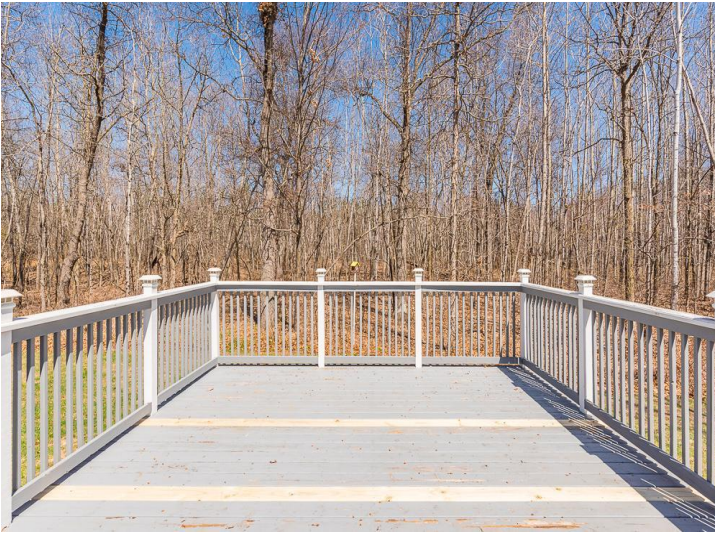
\$379,900
MLS 6712309 Residential
10098 Pin Oak Lane
Brainerd MN 56401



website: www.AffinityRealEstate.com | email: info@affinityrealestate.com | office: 218-237-3333 | fax: 218-237-3377



\$379,900
MLS 6712309 Residential
10098 Pin Oak Lane
Brainerd MN 56401



website: www.AffinityRealEstate.com | email: info@affinityrealestate.com | office: 218-237-3333 | fax: 218-237-3377



\$379,900
 MLS 6712309 Residential
 10098 Pin Oak Lane
 Brainerd MN 56401



website: www.AffinityRealEstate.com | email: info@affinityrealestate.com | office: 218-237-3333 | fax: 218-237-3377



\$379,900
MLS 6712309 Residential
10098 Pin Oak Lane
Brainerd MN 56401