



MLS 6712413 Residential

\$294,800

915 sq ft
2 bedrooms
1 baths

29133 Neighborly Drive
Laporte MN 56461

Status: Active

Description:

Welcome to Neighborly Dr—where this home gets a big dose of charm! This 1+ bedroom gem packs style, comfort, and smart design into every inch. Inside, you'll find cozy shiplap walls, barn wood ceilings, crisp grey cabinetry, a backsplash, and stainless appliances—all wrapped in a vibe that's rustic meets modern. The flexible layout includes a second room that walks through to the primary—great for an office, creative space, or guest nook. A loft overlooks the living room and makes a fun hangout or bonus sleeping spot. Industrial pipe handrails and ladder add cool character, and economical comfort is covered with floor heat, a mini-split for heating and cooling, and two electric fireplaces for extra coziness. Step outside to your private back patio, defined by bistro string lights for the perfect evening glow. The oversized 24x36 garage is insulated, has water, and is heated/cooled by a mini-split or wood stove—with garage doors on both ends for ultimate functionality. Need more space? There's also a 24x12 shed for all your gear and toys also with an attached dog kennel for your furry friends. The yard is open, sunny, and framed by mature trees for natural privacy. This place is ready to make you feel right at home! Just 2 miles from Laporte, MN. Check out an additional list of amenities and utility costs within the MLS documents.

Additional Details:

Year Built	2021
Lot Acres	2.5
Lot Dimensions	335x330
Garage Stalls	2
School District	306
Taxes	\$1,946
Taxes with Assessments	\$1,946
Tax Year	2025

Additional Features:

Basement: None **Fuel:** Propane **Garage:** 2 **Heat:** Boiler, Ductless Mini-Split, Fireplace(s), Radiant Floor **Sewer:** Septic System Compliant - Yes **Water:** Submersible - 4 Inch **Air Conditioning:** Ductless Mini-Split



Listed By:
Real Broker, LLC
39 to Neighborly Drive

Affinity Real Estate Inc. participates in the Regional Multiple Listing Service of Minnesota, Inc Broker Reciprocity (sm) program, allowing us to display other broker's listings on our website. All properties are subject to prior sale, change or withdrawal.



Call Affinity Real Estate
218-237-3333
info@affinityrealestate.com



Affinity Real Estate - 600 Park Avenue South - Park Rapids MN 56470



website: www.AffinityRealEstate.com | email: info@affinityrealestate.com | office: 218-237-3333 | fax: 218-237-3377

Affinity
REAL ESTATE INC

\$294,800
MLS 6712413 Residential
29133 Neighborly Drive
Laporte MN 56461



website: www.AffinityRealEstate.com | email: info@affinityrealestate.com | office: 218-237-3333 | fax: 218-237-3377

Affinity
REAL ESTATE INC

\$294,800
MLS 6712413 Residential
29133 Neighborly Drive
Laporte MN 56461



website: www.AffinityRealEstate.com | email: info@affinityrealestate.com | office: 218-237-3333 | fax: 218-237-3377

Affinity
REAL ESTATE INC

\$294,800
MLS 6712413 Residential
29133 Neighborly Drive
Laporte MN 56461



website: www.AffinityRealEstate.com | email: info@affinityrealestate.com | office: 218-237-3333 | fax: 218-237-3377

Affinity
REAL ESTATE INC

\$294,800
MLS 6712413 Residential
29133 Neighborly Drive
Laporte MN 56461



website: www.AffinityRealEstate.com | email: info@affinityrealestate.com | office: 218-237-3333 | fax:218-237-3377



\$294,800
MLS 6712413 Residential
29133 Neighborly Drive
Laporte MN 56461



website: www.AffinityRealEstate.com | email: info@affinityrealestate.com | office: 218-237-3333 | fax:218-237-3377



\$294,800
MLS 6712413 Residential
29133 Neighborly Drive
Laporte MN 56461



website: www.AffinityRealEstate.com | email: info@affinityrealestate.com | office: 218-237-3333 | fax:218-237-3377



\$294,800
MLS 6712413 Residential
29133 Neighborly Drive
Laporte MN 56461



website: www.AffinityRealEstate.com | email: info@affinityrealestate.com | office: 218-237-3333 | fax:218-237-3377

Affinity
REAL ESTATE INC

\$294,800
MLS 6712413 Residential
29133 Neighborly Drive
Laporte MN 56461



website: www.AffinityRealEstate.com | email: info@affinityrealestate.com | office: 218-237-3333 | fax:218-237-3377

Affinity
REAL ESTATE INC

\$294,800
MLS 6712413 Residential
29133 Neighborly Drive
Laporte MN 56461



website: www.AffinityRealEstate.com | email: info@affinityrealestate.com | office: 218-237-3333 | fax:218-237-3377



\$294,800
MLS 6712413 Residential
29133 Neighborly Drive
Laporte MN 56461



website: www.AffinityRealEstate.com | email: info@affinityrealestate.com | office: 218-237-3333 | fax:218-237-3377



\$294,800
MLS 6712413 Residential
29133 Neighborly Drive
Laporte MN 56461



website: www.AffinityRealEstate.com | email: info@affinityrealestate.com | office: 218-237-3333 | fax:218-237-3377



\$294,800
MLS 6712413 Residential
29133 Neighborly Drive
Laporte MN 56461



website: www.AffinityRealEstate.com | email: info@affinityrealestate.com | office: 218-237-3333 | fax: 218-237-3377

Affinity
REAL ESTATE INC

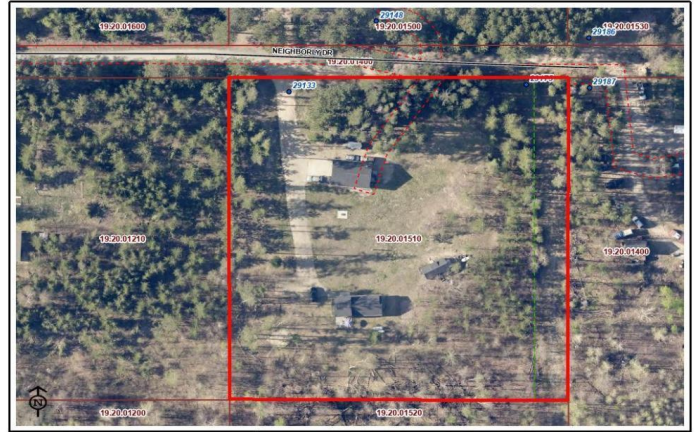
\$294,800
MLS 6712413 Residential
29133 Neighborly Drive
Laporte MN 56461



website: www.AffinityRealEstate.com | email: info@affinityrealestate.com | office: 218-237-3333 | fax: 218-237-3377

Affinity
REAL ESTATE INC

\$294,800
MLS 6712413 Residential
29133 Neighborly Drive
Laporte MN 56461



29133 Neighborly Dr
 Hubbard County - 301 Court Ave, Park Rapids, MN 56470
 Created 4/29/2025 at 04:34 PM



29133 Neighborly Dr
 Hubbard County - 301 Court Ave, Park Rapids, MN 56470
 Created 4/29/2025 at 04:41 PM



29133 Neighborly Dr
 Hubbard County - 301 Court Ave, Park Rapids, MN 56470
 Created 4/29/2025 at 04:47 PM

website: www.AffinityRealEstate.com | email: info@affinityrealestate.com | office: 218-237-3333 | fax: 218-237-3377



\$294,800
 MLS 6712413 Residential
 29133 Neighborly Drive
 Laporte MN 56461

website: www.AffinityRealEstate.com | email: info@affinityrealestate.com | office: 218-237-3333 | fax:218-237-3377



\$294,800

MLS 6712413 Residential
29133 Neighborly Drive
Laporte MN 56461

website: www.AffinityRealEstate.com | email: info@affinityrealestate.com | office: 218-237-3333 | fax:218-237-3377



\$294,800
MLS 6712413 Residential
29133 Neighborly Drive
Laporte MN 56461

website: www.AffinityRealEstate.com | email: info@affinityrealestate.com | office: 218-237-3333 | fax:218-237-3377



\$294,800
MLS 6712413 Residential
29133 Neighborly Drive
Laporte MN 56461