



MLS 6712442 Residential

\$329,000

2,748 sq ft
4 bedrooms
3 baths

2825 Florence Lane
Bemidji MN 56601

Status: Pending

Description:

4BR/3BA great Tudor-styled home in centrally located near town cul-de-sac neighborhood. Excellent home with lots of natural light, easy to care for yard and exceptional bedroom, bathroom and storage functions! Almost new natural gas furnace and central AC with one real wood and one gas fireplace!

Additional Details:

Year Built	1979
Lot Acres	0.78
Lot Dimensions	140x240
Garage Stalls	2
School District	31
Taxes	\$3,185
Taxes with Assessments	\$3,185
Tax Year	2025

Additional Features:

Basement: Block, Egress Window(s), Full, Partially Finished **Fuel:** Electric, Natural Gas, Wood **Garage:** 2 **Heat:** Forced Air, Fireplace(s)
Sewer: Private Sewer, Septic System Compliant - Yes, Tank with Drainage Field **Water:** Submersible - 4 Inch, Drilled, Private, Well **Air Conditioning:** Central Air

Driving Directions:

West on 15th St, right on Adams Ave, right on Florence Ln.



Listed By:
Century 21 Dickinson

Affinity Real Estate Inc. participates in the Regional Multiple Listing Service of Minnesota, Inc Broker Reciprocity (sm) program, allowing us to display other broker's listings on our website. All properties are subject to prior sale, change or withdrawal.



Call Affinity Real Estate

218-237-3333

info@affinityrealestate.com



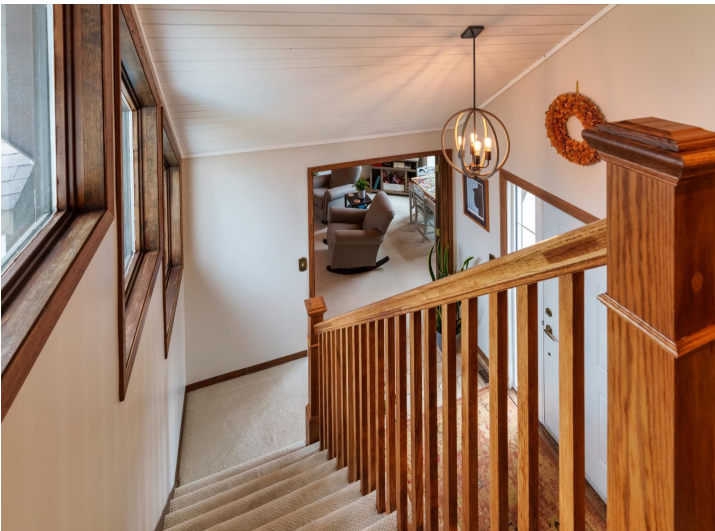
Affinity Real Estate - 600 Park Avenue South - Park Rapids MN 56470



website: www.AffinityRealEstate.com | email: info@affinityrealestate.com | office: 218-237-3333 | fax: 218-237-3377

Affinity
REAL ESTATE INC

\$329,000
MLS 6712442 Residential
2825 Florence Lane
Bemidji MN 56601



website: www.AffinityRealEstate.com | email: info@affinityrealestate.com | office: 218-237-3333 | fax: 218-237-3377

Affinity
REAL ESTATE INC

\$329,000
MLS 6712442 Residential
2825 Florence Lane
Bemidji MN 56601



website: www.AffinityRealEstate.com | email: info@affinityrealestate.com | office: 218-237-3333 | fax: 218-237-3377

Affinity
REAL ESTATE INC

\$329,000
MLS 6712442 Residential
2825 Florence Lane
Bemidji MN 56601



website: www.AffinityRealEstate.com | email: info@affinityrealestate.com | office: 218-237-3333 | fax: 218-237-3377

Affinity
REAL ESTATE INC

\$329,000
MLS 6712442 Residential
2825 Florence Lane
Bemidji MN 56601



website: www.AffinityRealEstate.com | email: info@affinityrealestate.com | office: 218-237-3333 | fax: 218-237-3377



\$329,000
MLS 6712442 Residential
2825 Florence Lane
Bemidji MN 56601