



MLS 6712741 Lake Home

\$327,000

880 sq ft
2 bedrooms
2 baths

16693 Hightop Way
Cass Lake MN 56633

Waterfront: Cass

Status: Active

Description:

Welcome to Tom's Harbor CIC on Cass Lake! This sweet home has 2 bedrooms, 2 baths with a detached double garage located on a corner lot. It's the perfect size for those looking to downsize into the right size home. Enjoy One level Living, your own boat slip in a protected harbor, newer outdoor swimming pool, amazing community lodge and no more mowing! Seller has added stylish new decks. Everything you need for year-round living or just come when you want to enjoy the lake. It's time to take the plunge into lake life at an affordable price. Call for a tour today.

Additional Details:

Year Built	2006
Lot Acres	0.01
Lot Dimensions	39x110
Garage Stalls	2
School District	115
Taxes	\$1,666
Taxes with Assessments	\$1,666
Tax Year	2025

Additional Features:

Fuel: Electric **Heat:** Forced Air

Driving Directions:

From Bemidi take Highway 2 E towards Cass Lake. In Cass Lake left on 61st Ave NW to 167th St NW. Right on 167th St NW to Hightop Way. Right on Hightop Way. Home on the right.



Listed By:
Better Homes and Gardens Real Estate First Choice

Affinity Real Estate Inc. participates in the Regional Multiple Listing Service of Minnesota, Inc Broker Reciprocity (sm) program, allowing us to display other broker's listings on our website. All properties are subject to prior sale, change or withdrawal.



Call Affinity Real Estate

218-237-3333

info@affinityrealestate.com



Affinity Real Estate - 600 Park Avenue South - Park Rapids MN 56470



website: www.AffinityRealEstate.com | email: info@affinityrealestate.com | office: 218-237-3333 | fax: 218-237-3377

Affinity
REAL ESTATE INC

\$327,000
MLS 6712741 Lake Home
16693 Hightop Way
Cass Lake MN 56633



website: www.AffinityRealEstate.com | email: info@affinityrealestate.com | office: 218-237-3333 | fax: 218-237-3377

Affinity
REAL ESTATE INC

\$327,000
MLS 6712741 Lake Home
16693 Hightop Way
Cass Lake MN 56633



website: www.AffinityRealEstate.com | email: info@affinityrealestate.com | office: 218-237-3333 | fax: 218-237-3377

Affinity
REAL ESTATE INC

\$327,000
MLS 6712741 Lake Home
16693 Hightop Way
Cass Lake MN 56633



website: www.AffinityRealEstate.com | email: info@affinityrealestate.com | office: 218-237-3333 | fax: 218-237-3377

Affinity
REAL ESTATE INC

\$327,000
MLS 6712741 Lake Home
16693 Hightop Way
Cass Lake MN 56633



website: www.AffinityRealEstate.com | email: info@affinityrealestate.com | office: 218-237-3333 | fax: 218-237-3377

Affinity
REAL ESTATE INC

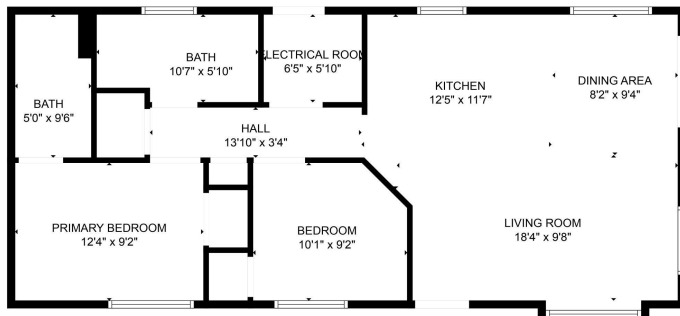
\$327,000
MLS 6712741 Lake Home
16693 Hightop Way
Cass Lake MN 56633



website: www.AffinityRealEstate.com | email: info@affinityrealestate.com | office: 218-237-3333 | fax: 218-237-3377

Affinity
REAL ESTATE INC

\$327,000
MLS 6712741 Lake Home
16693 Hightop Way
Cass Lake MN 56633



FLOOR PLAN CREATED BY CUBICASA APP. MEASUREMENTS DEEMED HIGHLY RELIABLE BUT NOT GUARANTEED.



website: www.AffinityRealEstate.com | email: info@affinityrealestate.com | office: 218-237-3333 | fax: 218-237-3377

Affinity
REAL ESTATE INC

\$327,000
MLS 6712741 Lake Home
16693 Hightop Way
Cass Lake MN 56633



website: www.AffinityRealEstate.com | email: info@affinityrealestate.com | office: 218-237-3333 | fax: 218-237-3377



\$327,000
 MLS 6712741 Lake Home
 16693 Hightop Way
 Cass Lake MN 56633



website: www.AffinityRealEstate.com | email: info@affinityrealestate.com | office: 218-237-3333 | fax:218-237-3377



\$327,000

MLS 6712741 Lake Home
16693 Hightop Way
Cass Lake MN 56633