



MLS 6712752 Lake Home

**\$1,775,000**

3,073 sq ft  
4 bedrooms  
3 baths

1380 Shore Drive  
Detroit Lakes MN 56501

Waterfront: Detroit

Status: Active

**Description:**

This beautifully crafted log home, built in 2000, offers the perfect blend of rustic charm and modern convenience. With 121 feet of pristine lake frontage, this property provides breathtaking views and direct access to the serene waters of Big Detroit Lake. Inside features four spacious bedrooms, a bright sunroom and a dedicated office, providing ample space for relaxation and productivity. The main floor laundry enhances convenience for everyday living and the fully finished walk-out basement is a true highlight, perfect for hosting gatherings, creating a recreational haven, or simply enjoying additional comfortable living space.

This property also includes a spacious four-stall detached garage, perfect for vehicles, recreational equipment, or a workshop. To make moving or renting effortless, the home comes fully furnished, allowing you to enjoy it immediately without the hassle of furnishing it yourself. Whether you're seeking a tranquil retreat or year-round lakeside living, this stunning home on the shores of Big Detroit Lake is a rare opportunity to own your personal slice of paradise.

**Additional Details:**


Year Built	2000
Lot Acres	0.64
Lot Dimensions	121 x 262 x 121 x 262
Garage Stalls	4
School District	22
Taxes	\$13,236
Taxes with Assessments	\$13,236
Tax Year	2025

**Additional Features:**

**Basement:** Finished, Concrete **Fuel:** Natural Gas **Garage:** 4 **Heat:** Forced Air **Sewer:** City Sewer/Connected **Water:** City Water/Connected **Air Conditioning:** Central Air

**Driving Directions:**

From Detroit Lakes, head East on Hwy 10 to East Shore Drive (County Hwy 53), then left onto South Shore Drive.

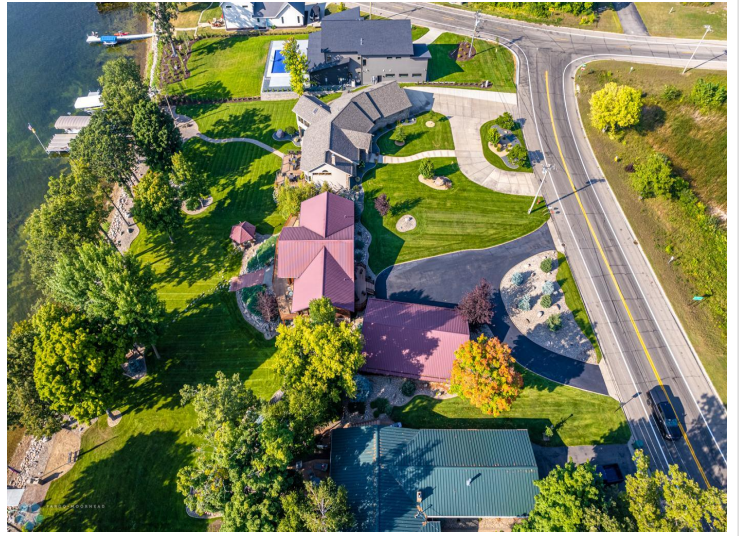
 Listed By:  
Berkshire Hathaway HomeServices Premier  
Property  
Affinity Real Estate Inc. participates in the Regional Multiple Listing  
Service of Minnesota, Inc Broker Reciprocity (sm) program, allowing  
us to display other broker's listings on our website. All properties are  
subject to prior sale, change or withdrawal.



**Call Affinity Real Estate**  
**218-237-3333**  
**info@affinityrealestate.com**



**Affinity Real Estate - 600 Park Avenue South - Park Rapids MN 56470**



website: [www.AffinityRealEstate.com](http://www.AffinityRealEstate.com) | email: [info@affinityrealestate.com](mailto:info@affinityrealestate.com) | office: 218-237-3333 | fax:218-237-3377



**\$1,775,000**  
MLS 6712752 Lake Home  
1380 Shore Drive  
Detroit Lakes MN 56501



website: [www.AffinityRealEstate.com](http://www.AffinityRealEstate.com) | email: [info@affinityrealestate.com](mailto:info@affinityrealestate.com) | office: 218-237-3333 | fax: 218-237-3377

**Affinity**  
REAL ESTATE INC

**\$1,775,000**  
MLS 6712752 Lake Home  
1380 Shore Drive  
Detroit Lakes MN 56501



website: [www.AffinityRealEstate.com](http://www.AffinityRealEstate.com) | email: [info@affinityrealestate.com](mailto:info@affinityrealestate.com) | office: 218-237-3333 | fax: 218-237-3377

**Affinity**  
REAL ESTATE INC

**\$1,775,000**  
MLS 6712752 Lake Home  
1380 Shore Drive  
Detroit Lakes MN 56501



website: [www.AffinityRealEstate.com](http://www.AffinityRealEstate.com) | email: [info@affinityrealestate.com](mailto:info@affinityrealestate.com) | office: 218-237-3333 | fax:218-237-3377

**Affinity**  
REAL ESTATE INC

**\$1,775,000**  
MLS 6712752 Lake Home  
1380 Shore Drive  
Detroit Lakes MN 56501



website: [www.AffinityRealEstate.com](http://www.AffinityRealEstate.com) | email: [info@affinityrealestate.com](mailto:info@affinityrealestate.com) | office: 218-237-3333 | fax:218-237-3377

**Affinity**  
REAL ESTATE INC

**\$1,775,000**  
MLS 6712752 Lake Home  
1380 Shore Drive  
Detroit Lakes MN 56501



website: [www.AffinityRealEstate.com](http://www.AffinityRealEstate.com) | email: [info@affinityrealestate.com](mailto:info@affinityrealestate.com) | office: 218-237-3333 | fax: 218-237-3377

**Affinity**  
REAL ESTATE INC

**\$1,775,000**  
MLS 6712752 Lake Home  
1380 Shore Drive  
Detroit Lakes MN 56501



website: [www.AffinityRealEstate.com](http://www.AffinityRealEstate.com) | email: [info@affinityrealestate.com](mailto:info@affinityrealestate.com) | office: 218-237-3333 | fax:218-237-3377



**\$1,775,000**  
MLS 6712752 Lake Home  
1380 Shore Drive  
Detroit Lakes MN 56501