



MLS 6712767 Lake Home

\$2,495,000

4,105 sq ft
5 bedrooms
5 baths

9356 Interlachen Road
Nisswa MN 56468

Waterfront: Gull

Status: Pending

Description:

"Chateau du Saisons" (Castle of Seasons) – Gull Lake

Architecturally inspired by Minnesota's four seasons is this custom designed Nor-Son Built 5BR 5BA craftsman-style lake home blending timeless craftsmanship with refined details throughout. This amazing property is situated on 118' of pristine Gull Lake shoreline offering easy elevation to a hard sand lake bottom and a water's edge deck ideal for enjoying stunning lake views and the beautifully manicured park-like grounds. The interior is of artisan design...featuring a 2-story entry with white oak plank floors throughout, oak beamed ceilings, a Grand staircase, hand crafted columns, copper light fixtures throughout and built-ins in nearly every room. The lakeside study has gorgeous Cherry woodworking, beamed ceilings, built-ins galore with a custom designed Murphy bed and doubles as an extra sleeping area for guests. The gourmet kitchen boasts custom quarter-sawn cabinetry with maple accents, black granite countertops with copper flecking, a large center island, top of the line stainless steel appliances and slate flooring. The formal dining includes a quarter-sawn oak buffet with a granite countertop, a buffet style built-in curio cabinet and prairie French doors that lead to the warm and welcoming lakeside sunroom offering a stone fireplace, a wall of windows and easy access to the beautiful aggregate lakeside covered porch...truly a great spot for enjoying special times with family and friends. The upper-level hosts two huge primary suites both with private executive baths along with a bright and cheerful family room. The lower level includes two additional guest bedrooms, a full bath, a hidden Tuscan style wine cellar, a partially finished workout area with endless possibilities that will add an additional 450 sq. ft. of living space when completed and a one-of-a-kind utility room equipped with top-tier mechanical systems...likely something you've never seen before. This quality built and impeccably cared for Gull Lake masterpiece is nestled beneath a canopy of mature trees and is surrounded by stunningly landscaped irrigated grounds, has a cobblestone paver driveway, copper heated gutters, an attached oversized 3-stall heated garage, a whole-home 20 KW generator and miles of paved walking and biking trails right out your back door.

Additional Details:

Year Built	2002
Lot Acres	0.65
Lot Dimensions	118 x 239 x 119 x 237
Garage Stalls	3
School District	181
Taxes	\$13,518

1	Broker Reciprocity	ents	\$13,518
1	Broker Reciprocity	Listed By:	Kurilla Real Estate LTD

Affinity Real Estate Inc. participates in the Regional Multiple Listing Service of Minnesota, Inc Broker Reciprocity (sm) program, allowing

Additional Features:
Basement: Block, Dark Tile, Stages, Windows, Full, Partially Finished, Storage, Back, Deck
Heating: Central Air, Radiant Floor, Private Sewer, Septic System Compliant - Yes, Tank with Drainage Field
Drilled, Private, Well **Air Conditioning:** Central Air



Call Affinity Real Estate

218-237-3333

info@affinityrealestate.com

MLS R Natural Gas Garage: 3
water: Submersible - 4 Inch,
Affinity Real Estate - 600 Park Avenue South - Park Rapids MN 56470

Driving Directions:
FROM NISSWA @ HOLIDAY STATION STOPLIGHT, JCT. OF 77 & 371, GO WEST ON 77 FOR 6.3 MILES TO SIGN & FIRE# 9356 ON LEFT



website: www.AffinityRealEstate.com | email: info@affinityrealestate.com | office: 218-237-3333 | fax: 218-237-3377

Affinity
REAL ESTATE INC

\$2,495,000

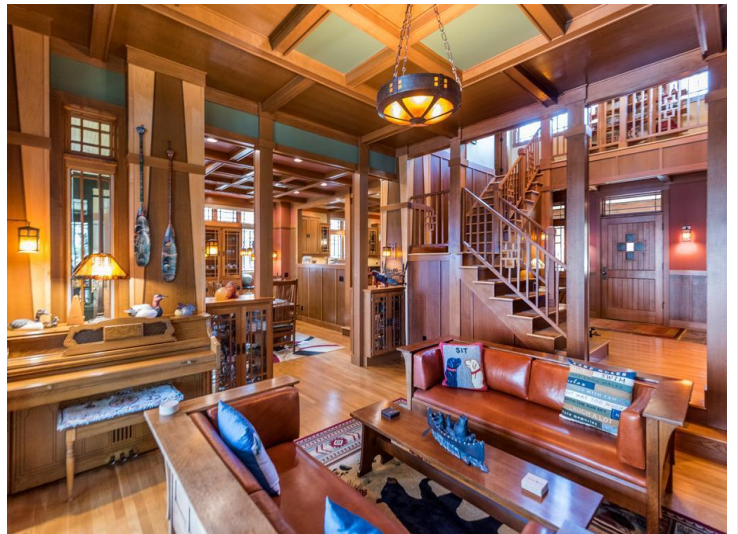
MLS 6712767 Lake Home
9356 Interlachen Road
Nisswa MN 56468



website: www.AffinityRealEstate.com | email: info@affinityrealestate.com | office: 218-237-3333 | fax: 218-237-3377



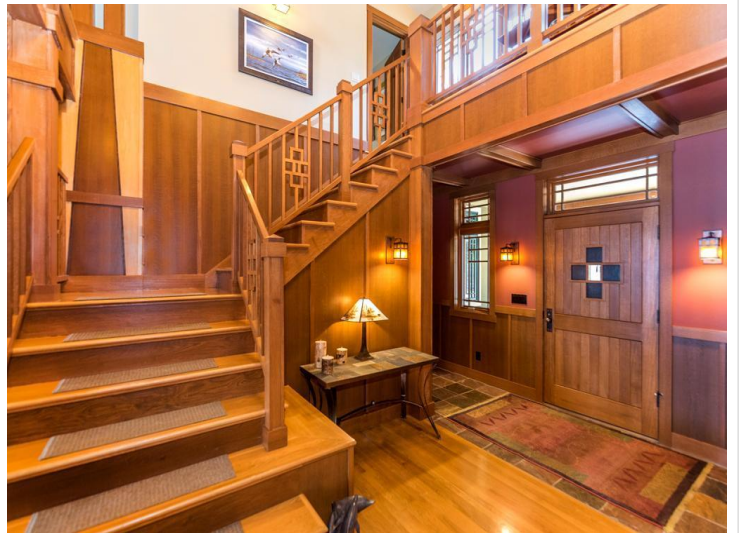
\$2,495,000
 MLS 6712767 Lake Home
 9356 Interlachen Road
 Nisswa MN 56468



website: www.AffinityRealEstate.com | email: info@affinityrealestate.com | office: 218-237-3333 | fax: 218-237-3377

Affinity
REAL ESTATE INC

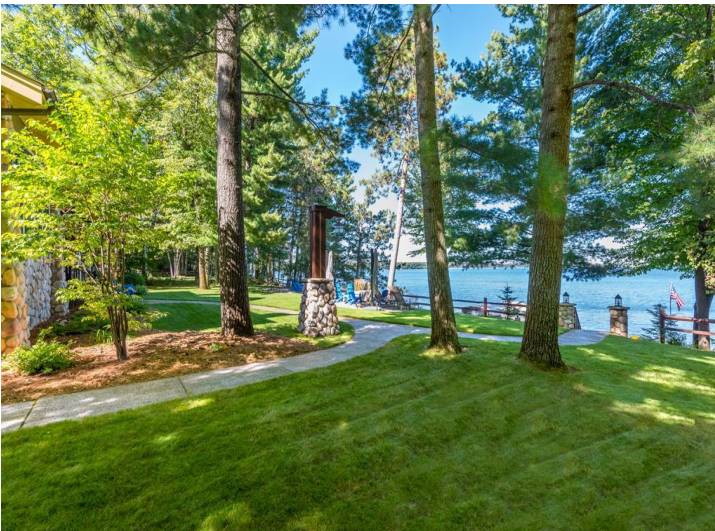
\$2,495,000
MLS 6712767 Lake Home
9356 Interlachen Road
Nisswa MN 56468



website: www.AffinityRealEstate.com | email: info@affinityrealestate.com | office: 218-237-3333 | fax: 218-237-3377

Affinity
REAL ESTATE INC

\$2,495,000
MLS 6712767 Lake Home
9356 Interlachen Road
Nisswa MN 56468



website: www.AffinityRealEstate.com | email: info@affinityrealestate.com | office: 218-237-3333 | fax: 218-237-3377

Affinity
REAL ESTATE INC

\$2,495,000

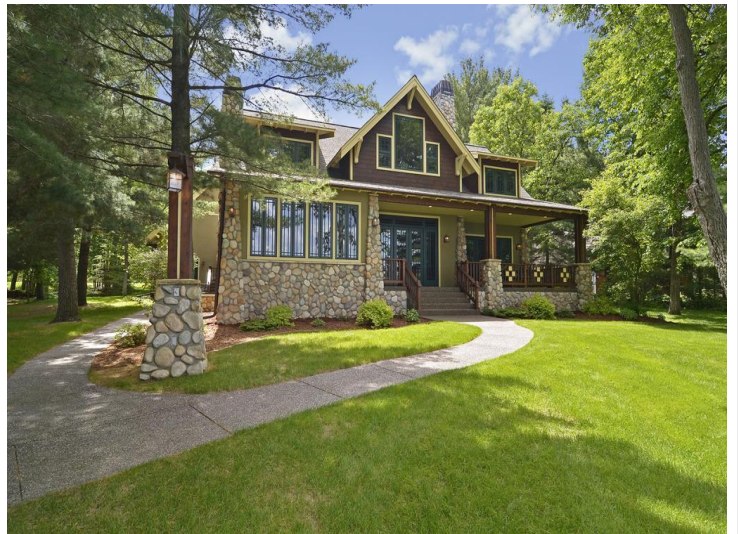
MLS 6712767 Lake Home
9356 Interlachen Road
Nisswa MN 56468



website: www.AffinityRealEstate.com | email: info@affinityrealestate.com | office: 218-237-3333 | fax: 218-237-3377

Affinity
REAL ESTATE INC

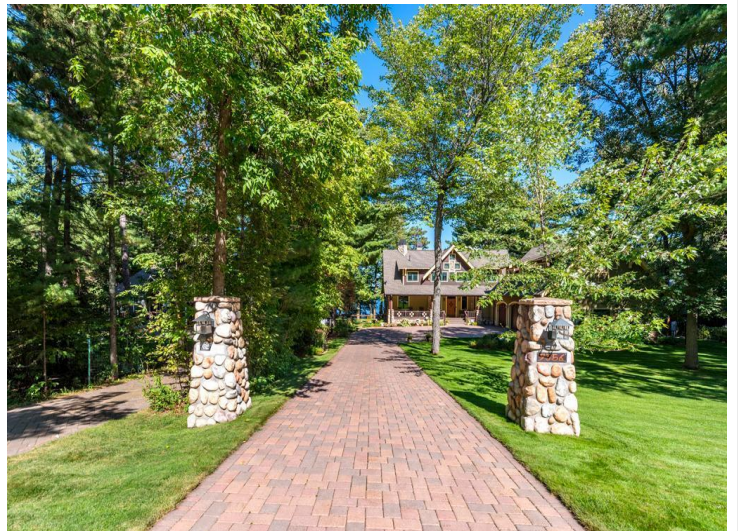
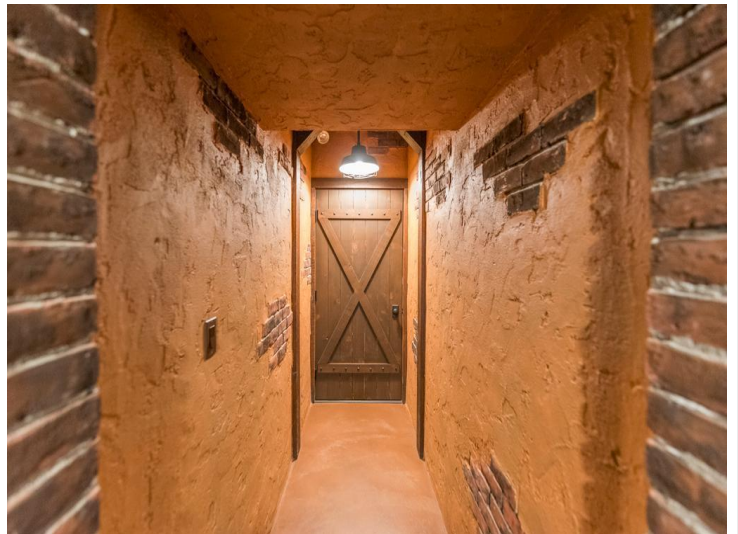
\$2,495,000
MLS 6712767 Lake Home
9356 Interlachen Road
Nisswa MN 56468



website: www.AffinityRealEstate.com | email: info@affinityrealestate.com | office: 218-237-3333 | fax: 218-237-3377

Affinity
REAL ESTATE INC

\$2,495,000
MLS 6712767 Lake Home
9356 Interlachen Road
Nisswa MN 56468



website: www.AffinityRealEstate.com | email: info@affinityrealestate.com | office: 218-237-3333 | fax: 218-237-3377

Affinity
REAL ESTATE INC

\$2,495,000
MLS 6712767 Lake Home
9356 Interlachen Road
Nisswa MN 56468



website: www.AffinityRealEstate.com | email: info@affinityrealestate.com | office: 218-237-3333 | fax: 218-237-3377



\$2,495,000

MLS 6712767 Lake Home
9356 Interlachen Road
Nisswa MN 56468