



MLS 6712852 Lake Home

**\$359,900**

1,248 sq ft  
3 bedrooms  
2 baths

617 Brookside Pass  
Outing MN 56662

Waterfront: Lawrence

Status: Active

#### Description:

Enjoy the lake life!! This property is located on Lawrence Lake in Outing, MN which is also connected to Roosevelt Lake!! This property features 70' of lake frontage, a dock, gradual elevation that levels out at the lake which makes for great lakeside entertaining and enjoyment!! The property also features a lakeside garage which makes for great storage for all the lake toys, mature pine trees which adds to the up north feel, an additional 16x24 garage by the cabin and is located close to ATV/Snowmobile trails!! Inside this lightly used property features a nice kitchen space with ample cabinet space, two dining spaces, laundry room w/hookups, primary bedroom with a full primary bath, 2 additional guest bedrooms, a 2nd full bath and a large living room!! Additional features include central air, updated water heater and also comes completely furnished!! Start making those lake memories today!!

#### Additional Details:

Year Built	2003
Lot Acres	0.48
Lot Dimensions	See Aerial Map
Garage Stalls	3
School District	118
Taxes	\$1,454
Taxes with Assessments	\$1,520
Tax Year	2025

#### Additional Features:

**Basement:** Slab **Fuel:** Propane **Garage:** 3 **Heat:** Forced Air **Sewer:** Private Sewer, Tank with Drainage Field **Water:** Drilled, Well **Air Conditioning:** Central Air

#### Driving Directions:

In Outing take County Road 58 to a right onto Brookside Pass NE and follow to 617 Brookside Pass NE



Listed By:  
Edina Realty, Inc.

Affinity Real Estate Inc. participates in the Regional Multiple Listing Service of Minnesota, Inc Broker Reciprocity (sm) program, allowing us to display other broker's listings on our website. All properties are subject to prior sale, change or withdrawal.



Call Affinity Real Estate

**218-237-3333**

[info@affinityrealestate.com](mailto:info@affinityrealestate.com)



Affinity Real Estate - 600 Park Avenue South - Park Rapids MN 56470



website: [www.AffinityRealEstate.com](http://www.AffinityRealEstate.com) | email: [info@affinityrealestate.com](mailto:info@affinityrealestate.com) | office: 218-237-3333 | fax: 218-237-3377

**Affinity**  
REAL ESTATE INC

**\$359,900**  
MLS 6712852 Lake Home  
617 Brookside Pass  
Outing MN 56662



website: [www.AffinityRealEstate.com](http://www.AffinityRealEstate.com) | email: [info@affinityrealestate.com](mailto:info@affinityrealestate.com) | office: 218-237-3333 | fax: 218-237-3377



**\$359,900**  
 MLS 6712852 Lake Home  
 617 Brookside Pass  
 Outing MN 56662

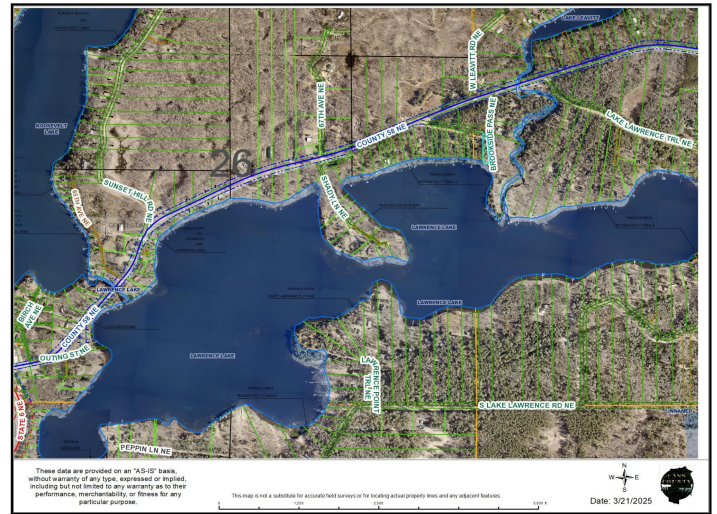


website: [www.AffinityRealEstate.com](http://www.AffinityRealEstate.com) | email: [info@affinityrealestate.com](mailto:info@affinityrealestate.com) | office: 218-237-3333 | fax: 218-237-3377

**Affinity**  
REAL ESTATE INC

**\$359,900**

MLS 6712852 Lake Home  
617 Brookside Pass  
Outing MN 56662



FLOOR PLAN

GROSS INTERNAL AREA  
FLOOR PLAN 1,227 sq. ft.  
TOTAL 1,227 sq. ft.  
SIZES AND DIMENSIONS ARE APPROXIMATE, ACTUAL MAY VARY.



website: [www.AffinityRealEstate.com](http://www.AffinityRealEstate.com) | email: [info@affinityrealestate.com](mailto:info@affinityrealestate.com) | office: 218-237-3333 | fax: 218-237-3377



**\$359,900**  
MLS 6712852 Lake Home  
617 Brookside Pass  
Outing MN 56662



website: [www.AffinityRealEstate.com](http://www.AffinityRealEstate.com) | email: [info@affinityrealestate.com](mailto:info@affinityrealestate.com) | office: 218-237-3333 | fax: 218-237-3377

**Affinity**  
REAL ESTATE INC

**\$359,900**  
MLS 6712852 Lake Home  
617 Brookside Pass  
Outing MN 56662



website: [www.AffinityRealEstate.com](http://www.AffinityRealEstate.com) | email: [info@affinityrealestate.com](mailto:info@affinityrealestate.com) | office: 218-237-3333 | fax: 218-237-3377

**Affinity**  
REAL ESTATE INC

**\$359,900**  
MLS 6712852 Lake Home  
617 Brookside Pass  
Outing MN 56662



website: [www.AffinityRealEstate.com](http://www.AffinityRealEstate.com) | email: [info@affinityrealestate.com](mailto:info@affinityrealestate.com) | office: 218-237-3333 | fax: 218-237-3377



**\$359,900**  
MLS 6712852 Lake Home  
617 Brookside Pass  
Outing MN 56662



website: [www.AffinityRealEstate.com](http://www.AffinityRealEstate.com) | email: [info@affinityrealestate.com](mailto:info@affinityrealestate.com) | office: 218-237-3333 | fax: 218-237-3377



**\$359,900**  
 MLS 6712852 Lake Home  
 617 Brookside Pass  
 Outing MN 56662

website: [www.AffinityRealEstate.com](http://www.AffinityRealEstate.com) | email: [info@affinityrealestate.com](mailto:info@affinityrealestate.com) | office: 218-237-3333 | fax:218-237-3377



**\$359,900**

MLS 6712852 Lake Home  
617 Brookside Pass  
Outing MN 56662