



MLS 6712870 Land

**\$200,000**

1.8 Acres

Raw Land

TBD County Road 11  
Pequot Lakes MN 56472

Status: Active



**Description:**

Zoning allows for 10,000 sq ft lots on sewer land. County round about coming at Edgewater Farms intersection to the west. Working with City of Breezy Point for lot split.

**Additional Details:**

Lot Acres	1.8
Lot Dimensions	212 x 366
School District	186
Taxes	\$2,266
Taxes with Assessments	\$2,316
Tax Year	2024

**Additional Features:**

**Driving Directions:**

Located on Cty Rd 11 across from Eagle View Elementary school between Breezy Point and Pequot Lakes.



Listed By:  
RE/MAX Results - Crosslake

Affinity Real Estate Inc. participates in the Regional Multiple Listing Service of Minnesota, Inc Broker Reciprocity (sm) program, allowing us to display other broker's listings on our website. All properties are subject to prior sale, change or withdrawal.



Call Affinity Real Estate

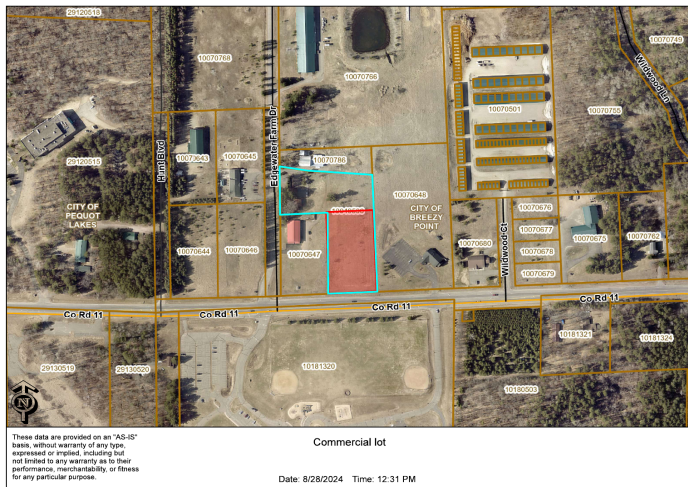
**218-237-3333**

[info@affinityrealestate.com](mailto:info@affinityrealestate.com)



Affinity Real Estate - 600 Park Avenue South - Park Rapids MN 56470





website: [www.AffinityRealEstate.com](http://www.AffinityRealEstate.com) | email: [info@affinityrealestate.com](mailto:info@affinityrealestate.com) | office: 218-237-3333 | fax: 218-237-3377

**Affinity**  
REAL ESTATE INC

**\$200,000**  
MLS 6712870 Land  
TBD County Road 11  
Pequot Lakes MN 56472





website: [www.AffinityRealEstate.com](http://www.AffinityRealEstate.com) | email: [info@affinityrealestate.com](mailto:info@affinityrealestate.com) | office: 218-237-3333 | fax:218-237-3377



**\$200,000**  
MLS 6712870 Land  
TBD County Road 11  
Pequot Lakes MN 56472