



MLS 6712892 Lake Home

\$429,900

1,792 sq ft
2 bedrooms
2 baths

38922 Christie Lane
Cohasset MN 55721

Waterfront: Bass Lake (31057600)

Status: Active

Description:

Escape to the quiet beauty of the northwoods with this cozy, well maintained home situated on over 9 acres along the tranquil shores of Bass Lake. This 2-bedroom, 2-bathroom home is the perfect blend of comfort and country charm, surrounded by towering trees, wildlife, and lake living. All living is on the main floor, offering a practical and inviting layout that includes an open living area, a country-style eat in kitchen, and two full bathrooms. There is an attached three-stall garage that adds convenience for parking, hobbies and maintenance of equipment. Step outside to enjoy your own slice of nature by walking the wooded trail to Bass Lake, cast a line from the shoreline, and maintain a nice sized garden. With plenty of space to roam and room to breathe, this Bass Lake property is ideal as a year-round home, seasonal getaway, or a place to simply unplug and unwind.

Additional Details:

Year Built	2001
Lot Acres	9.92
Lot Dimensions	485x982x376x1206
Garage Stalls	3
School District	318
Taxes	\$2,944
Taxes with Assessments	\$2,944
Tax Year	2025

Additional Features:

Basement: Crawl Space, Concrete **Fuel:** Natural Gas **Garage:** 3 **Heat:** Forced Air **Sewer:** Private Sewer **Water:** Drilled, Private, Well **Air Conditioning:** Central Air

Driving Directions:

Hwy 2 West, right onto County Road 88, right onto County Road 226 (Pincherry Grove Resort Road)



Listed By:
MOVE IT REAL ESTATE
GROUP/LAKEHOMES.COM
Affinity Real Estate Inc. participates in the Regional Multiple Listing Service of Minnesota, Inc Broker Reciprocity (sm) program, allowing us to display other broker's listings on our website. All properties are subject to prior sale, change or withdrawal.



Call Affinity Real Estate

218-237-3333

info@affinityrealestate.com



Affinity Real Estate - 600 Park Avenue South - Park Rapids MN 56470



website: www.AffinityRealEstate.com | email: info@affinityrealestate.com | office: 218-237-3333 | fax: 218-237-3377

Affinity
REAL ESTATE INC

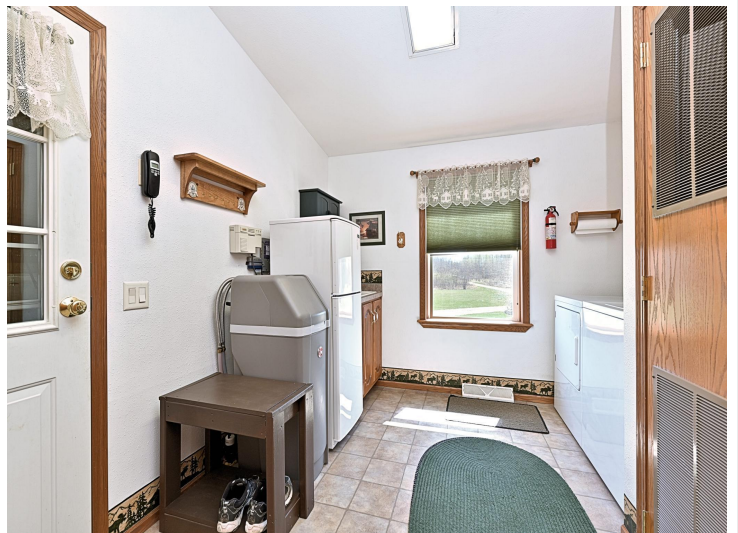
\$429,900
MLS 6712892 Lake Home
38922 Christie Lane
Cohasset MN 55721



website: www.AffinityRealEstate.com | email: info@affinityrealestate.com | office: 218-237-3333 | fax: 218-237-3377

Affinity
REAL ESTATE INC

\$429,900
MLS 6712892 Lake Home
38922 Christie Lane
Cohasset MN 55721



website: www.AffinityRealEstate.com | email: info@affinityrealestate.com | office: 218-237-3333 | fax: 218-237-3377

Affinity
REAL ESTATE INC

\$429,900
MLS 6712892 Lake Home
38922 Christie Lane
Cohasset MN 55721



website: www.AffinityRealEstate.com | email: info@affinityrealestate.com | office: 218-237-3333 | fax: 218-237-3377

Affinity
REAL ESTATE INC

\$429,900
MLS 6712892 Lake Home
38922 Christie Lane
Cohasset MN 55721



website: www.AffinityRealEstate.com | email: info@affinityrealestate.com | office: 218-237-3333 | fax: 218-237-3377



\$429,900
 MLS 6712892 Lake Home
 38922 Christie Lane
 Cohasset MN 55721



website: www.AffinityRealEstate.com | email: info@affinityrealestate.com | office: 218-237-3333 | fax:218-237-3377



\$429,900

MLS 6712892 Lake Home
38922 Christie Lane
Cohasset MN 55721