



MLS 6713053 Lake Land

\$155,000

Description:

Check out this fantastic property that would make for either a wonderful homestead or a great place to build a hunting shack. This 39+ acre parcel features frontage on both Jokela Lake and Hay Creek. The great views from the perfect building site make this a dream location. There is a mixture of waterfront and heavily wooded areas. The entrance to the property across the rustic bridge make for your perfect beginning.

Additional Details:

Lot Acres	39.23
Lot Dimensions	1322x1333
School District	2174
Taxes	\$368
Taxes with Assessments	\$368
Tax Year	2025

Additional Features:

Driving Directions:

From Jenkins, take Lilac St West, turn right on 12th Ave SW, turn left on Haycreek Rd SW, turns into 40th St and property on right.



Listed By:
Weichert REALTORS Tower Properties

Affinity Real Estate Inc. participates in the Regional Multiple Listing Service of Minnesota, Inc Broker Reciprocity (sm) program, allowing us to display other broker's listings on our website. All properties are subject to prior sale, change or withdrawal.



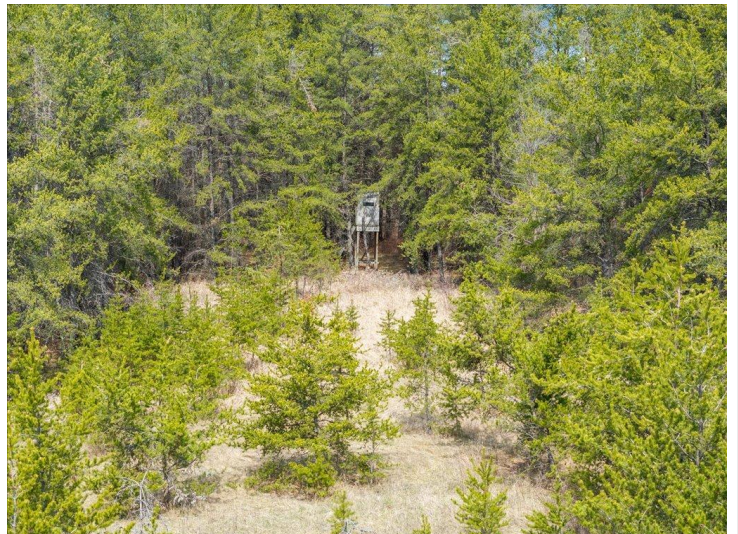
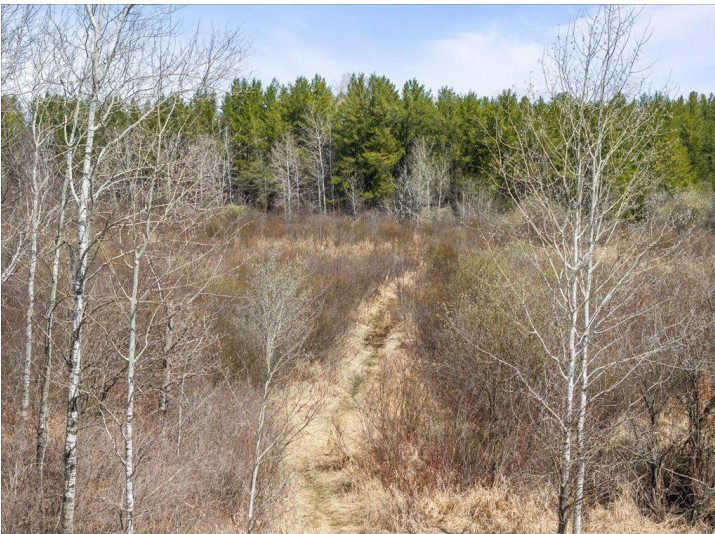
Call Affinity Real Estate

218-237-3333

info@affinityrealestate.com



Affinity Real Estate - 600 Park Avenue South - Park Rapids MN 56470



website: www.AffinityRealEstate.com | email: info@affinityrealestate.com | office: 218-237-3333 | fax: 218-237-3377



\$155,000
 MLS 6713053 Lake Land
 1500 40th Street
 Pine River MN 56474

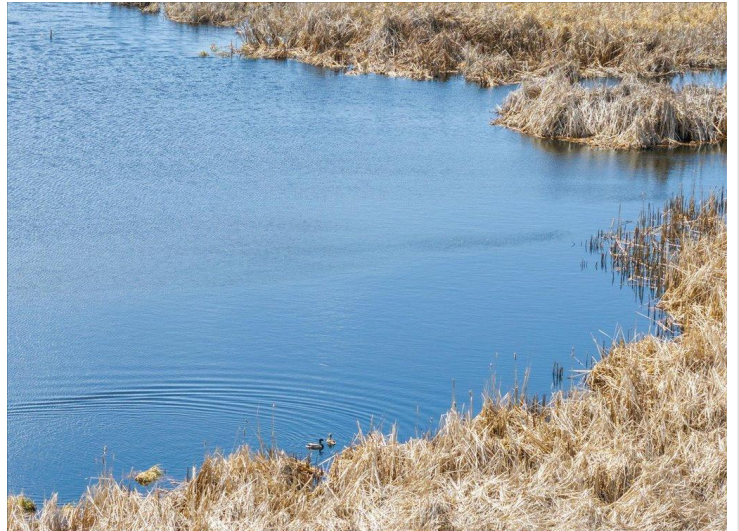


website: www.AffinityRealEstate.com | email: info@affinityrealestate.com | office: 218-237-3333 | fax: 218-237-3377



\$155,000

MLS 6713053 Lake Land
1500 40th Street
Pine River MN 56474



website: www.AffinityRealEstate.com | email: info@affinityrealestate.com | office: 218-237-3333 | fax: 218-237-3377



\$155,000
 MLS 6713053 Lake Land
 1500 40th Street
 Pine River MN 56474