



MLS 6713074 Land

\$99,900

10 Acres
Raw Land

TBD County Rd 1
Pequot Lakes MN 56472

Status: Pending

Description:

Embrace the tranquility of northern Minnesota with this expansive 10-acre property situated in Fairview Township, just minutes from Pequot Lakes, Nisswa, Pillager, and more. This parcel offers a open setting, providing the perfect canvas for your dream home, hobby farm, or recreational retreat. A short drive to Gull Lake, championship golf courses, Pillsbury State Forest, plenty of trails, and the city of Brainerd for more amenities that the Brainerd Lakes Area has to offer! Schedule your showing today!

Additional Details:

Lot Acres	10
Lot Dimensions	TBD
School District	116
Taxes	(unreported)
Taxes with Assessments	(unreported)
Tax Year	2025

Additional Features:

Driving Directions:

North of CR15 on east side of CR1



Listed By:
Edina Realty, Inc.

Affinity Real Estate Inc. participates in the Regional Multiple Listing Service of Minnesota, Inc Broker Reciprocity (sm) program, allowing us to display other broker's listings on our website. All properties are subject to prior sale, change or withdrawal.



Call Affinity Real Estate

218-237-3333

info@affinityrealestate.com



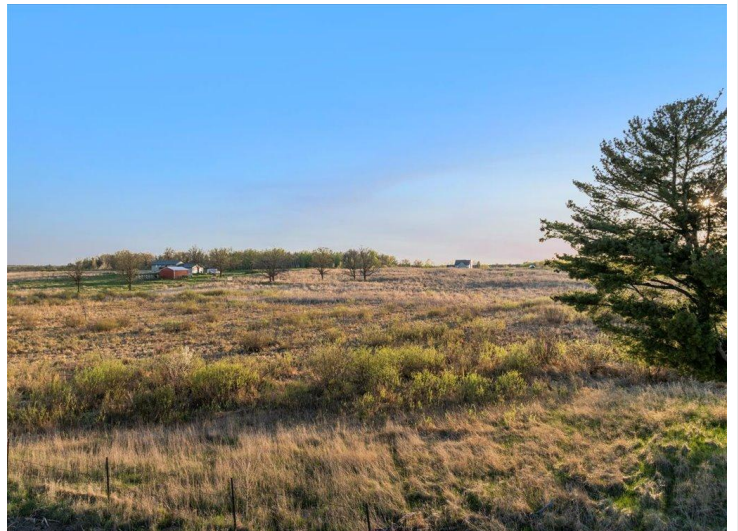
Affinity Real Estate - 600 Park Avenue South - Park Rapids MN 56470



website: www.AffinityRealEstate.com | email: info@affinityrealestate.com | office: 218-237-3333 | fax: 218-237-3377



\$99,900
 MLS 6713074 Land
 TBD County Rd 1
 Pequot Lakes MN 56472



website: www.AffinityRealEstate.com | email: info@affinityrealestate.com | office: 218-237-3333 | fax: 218-237-3377



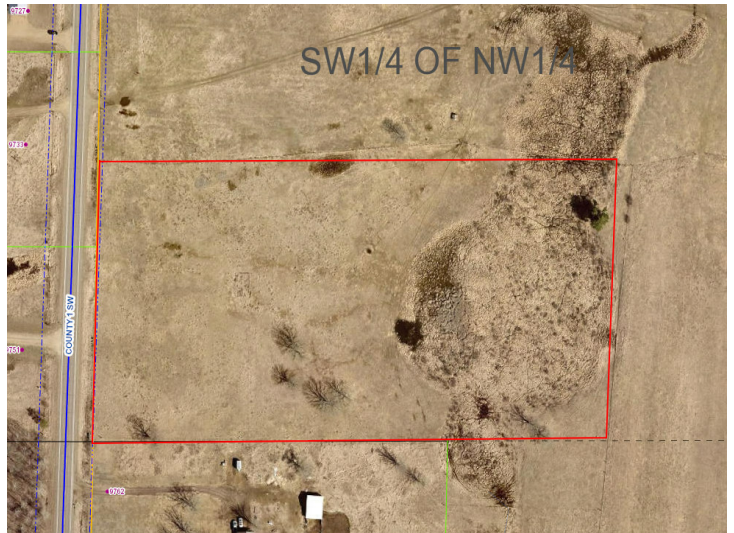
\$99,900
MLS 6713074 Land
TBD County Rd 1
Pequot Lakes MN 56472



website: www.AffinityRealEstate.com | email: info@affinityrealestate.com | office: 218-237-3333 | fax: 218-237-3377



\$99,900
 MLS 6713074 Land
 TBD County Rd 1
 Pequot Lakes MN 56472



website: www.AffinityRealEstate.com | email: info@affinityrealestate.com | office: 218-237-3333 | fax:218-237-3377



\$99,900
MLS 6713074 Land
TBD County Rd 1
Pequot Lakes MN 56472