



MLS 6713631 Lake Home

\$595,000

2,192 sq ft
3 bedrooms
2 baths

23505 Gracewood Drive
Park Rapids MN 56470

Waterfront: Beden

Status: Active

Description:

Escape to this year-round and secluded one-level living home with 2700 sq ft, 600 feet on Beden Lake and 20 acres with plenty of privacy and incredible wildlife. As you enter this home you will see the attention to detail and the craftsmanship featured with its rustic oak hardwood flooring and tile, custom built cherry cabinetry throughout, granite countertops and stainless-steel appliances. Additional features include 3 bedrooms, 2 baths and one of them being the primary suite with a tiled walk-in shower, walk-out to the lakeside deck for those beautiful sunsets and easy access to the lake. There is a partial basement with tons of storage, large family room and updated mechanics including furnace, water heater, pump, water softener, Kinetico water systems and also washer and dryer hookups on each floor. There is a 2-car attached garage and also a detached 24x40 shop with a great supply of cabinets and a separate barn for storage. To add to all those great features, it is also turn-key with all the furniture and furnishings! This remarkable property offers the perfect blend of rustic charm and modern comfort, making it an idyllic escape from the hustle and bustle of everyday life and everything that an outdoor enthusiast is looking for! The setting truly defines the northern experience!!

Additional Details:

Year Built	1982
Lot Acres	19.1
Lot Dimensions	600x1380
Garage Stalls	6
School District	309
Taxes	\$707
Taxes with Assessments	\$928
Tax Year	2025

Additional Features:

Fuel: Electric, Propane **Heat:** Dual, Forced Air, Heat Pump

Driving Directions:

From Hwy 34/71 in Park Rapids, go north on 71 for 4.8 miles. Turn left onto County 32 and go approx 1.6 miles. Turn right onto Gracewood Dr and go .5 miles to our sign on the left.



Listed By:
Affinity Real Estate Inc.

Affinity Real Estate Inc. participates in the Regional Multiple Listing Service of Minnesota, Inc Broker Reciprocity (sm) program, allowing us to display other broker's listings on our website. All properties are subject to prior sale, change or withdrawal.



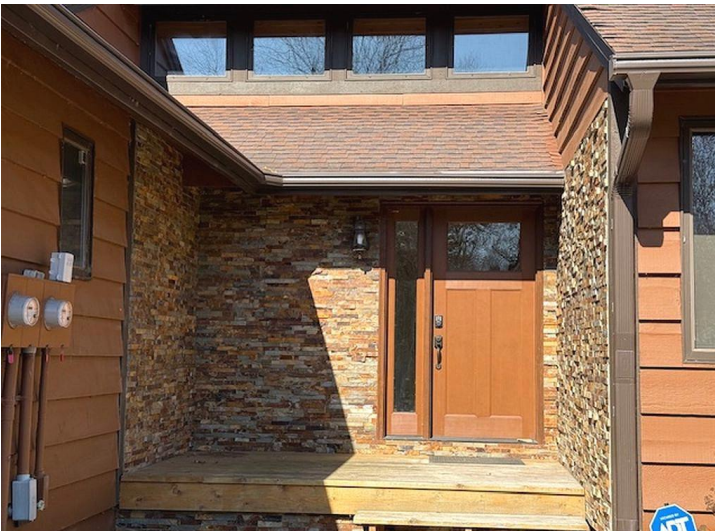
Call Affinity Real Estate

218-237-3333

info@affinityrealestate.com



Affinity Real Estate - 600 Park Avenue South - Park Rapids MN 56470



website: www.AffinityRealEstate.com | email: info@affinityrealestate.com | office: 218-237-3333 | fax: 218-237-3377

Affinity
REAL ESTATE INC

\$595,000
MLS 6713631 Lake Home
23505 Gracewood Drive
Park Rapids MN 56470



website: www.AffinityRealEstate.com | email: info@affinityrealestate.com | office: 218-237-3333 | fax: 218-237-3377



\$595,000

MLS 6713631 Lake Home
23505 Gracewood Drive
Park Rapids MN 56470



website: www.AffinityRealEstate.com | email: info@affinityrealestate.com | office: 218-237-3333 | fax: 218-237-3377

Affinity
REAL ESTATE INC

\$595,000
MLS 6713631 Lake Home
23505 Gracewood Drive
Park Rapids MN 56470



website: www.AffinityRealEstate.com | email: info@affinityrealestate.com | office: 218-237-3333 | fax: 218-237-3377



\$595,000
 MLS 6713631 Lake Home
 23505 Gracewood Drive
 Park Rapids MN 56470

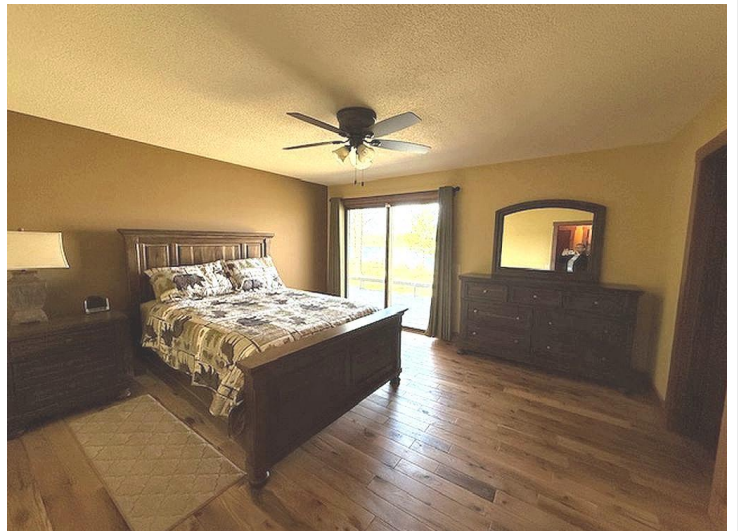


website: www.AffinityRealEstate.com | email: info@affinityrealestate.com | office: 218-237-3333 | fax: 218-237-3377



\$595,000

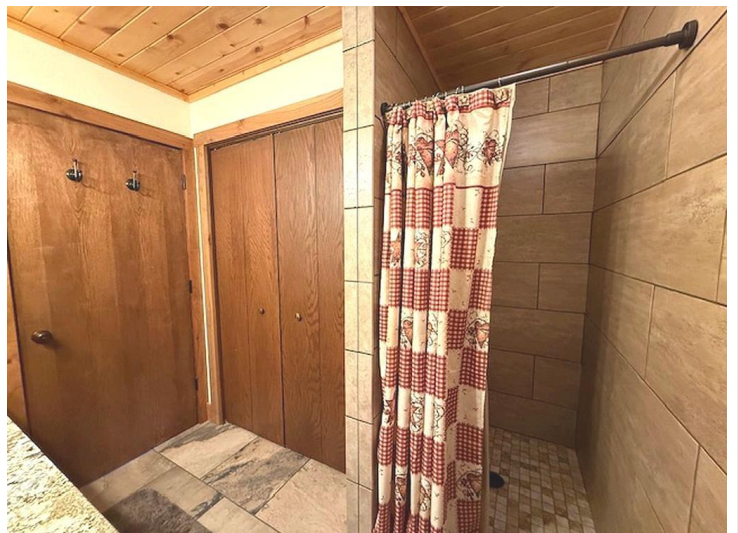
MLS 6713631 Lake Home
23505 Gracewood Drive
Park Rapids MN 56470



website: www.AffinityRealEstate.com | email: info@affinityrealestate.com | office: 218-237-3333 | fax: 218-237-3377

Affinity
REAL ESTATE INC

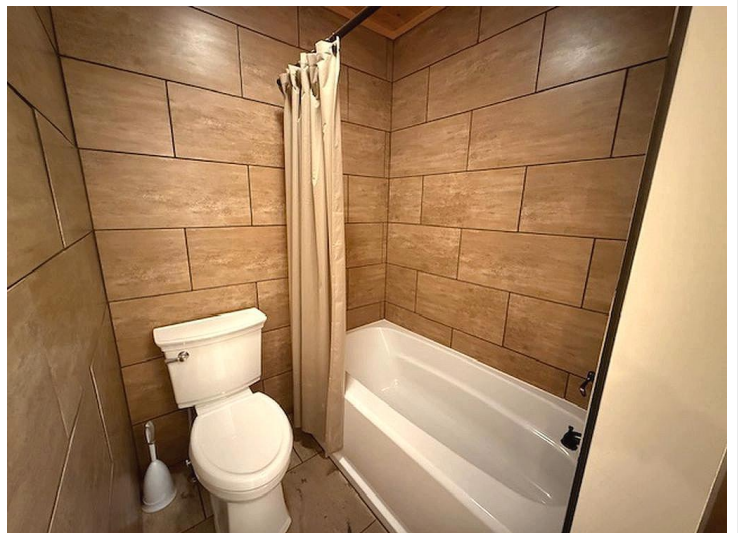
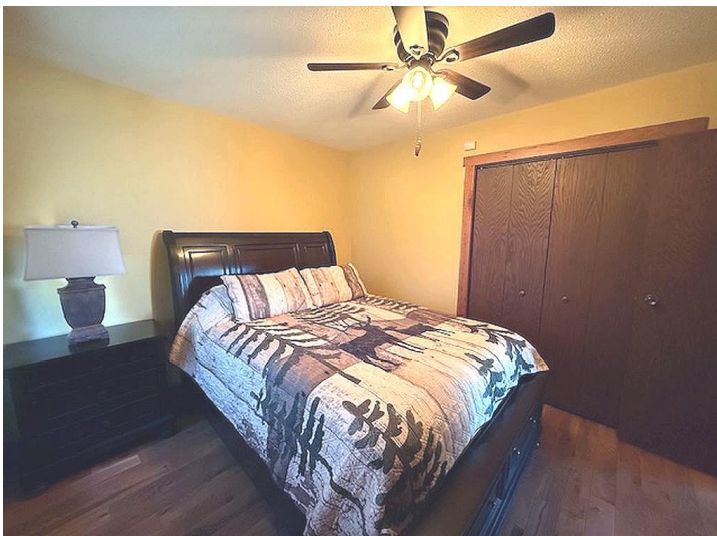
\$595,000
MLS 6713631 Lake Home
23505 Gracewood Drive
Park Rapids MN 56470



website: www.AffinityRealEstate.com | email: info@affinityrealestate.com | office: 218-237-3333 | fax: 218-237-3377



\$595,000
MLS 6713631 Lake Home
23505 Gracewood Drive
Park Rapids MN 56470



website: www.AffinityRealEstate.com | email: info@affinityrealestate.com | office: 218-237-3333 | fax: 218-237-3377

Affinity
REAL ESTATE INC

\$595,000
MLS 6713631 Lake Home
23505 Gracewood Drive
Park Rapids MN 56470



website: www.AffinityRealEstate.com | email: info@affinityrealestate.com | office: 218-237-3333 | fax: 218-237-3377



\$595,000
 MLS 6713631 Lake Home
 23505 Gracewood Drive
 Park Rapids MN 56470



website: www.AffinityRealEstate.com | email: info@affinityrealestate.com | office: 218-237-3333 | fax: 218-237-3377



\$595,000
 MLS 6713631 Lake Home
 23505 Gracewood Drive
 Park Rapids MN 56470



website: www.AffinityRealEstate.com | email: info@affinityrealestate.com | office: 218-237-3333 | fax: 218-237-3377



\$595,000
 MLS 6713631 Lake Home
 23505 Gracewood Drive
 Park Rapids MN 56470