



MLS 6714610 Land

\$45,000

3 Acres
Raw Land

6690 108th Street
Laporte MN 56461

Status: Active

Description:

RV site or building site, 3 acres, nicely wooded with building or parking area already cleared, driveway in, newly mounted RV elect, 50amp, 30amp & 3x 110 outlets. Outhouse w elect. 10x 12 shed with wood floor, shelving and elect. (locked). Food plot started rear and side boundary ribboned. Excellent location, just 7 miles north of Walker on Hwy 371 then ½ mi west on 108th Str. Extensive public lands only 2 mi to the west, great hunting. Excellent public access to Leech Lake off Hwy 371 only 5 minutes away and nice public access to Steamboat Lake just 6 min away. Very Nice Property. Fish house there DOES NOT STAY.

Additional Details:

Lot Acres	3
Lot Dimensions	185x464x370x244x185x220
School District	113
Taxes	\$142
Taxes with Assessments	\$208
Tax Year	2025

Additional Features:

Driving Directions:

From Walker take Hwy 371N 7 miles, turn left on 108th St (County Rd 61), follow 1/2 mile to property on right, sign on property.



Listed By:
askRICK.com dba Walker Area Realty

Affinity Real Estate Inc. participates in the Regional Multiple Listing Service of Minnesota, Inc Broker Reciprocity (sm) program, allowing us to display other broker's listings on our website. All properties are subject to prior sale, change or withdrawal.



Call Affinity Real Estate

218-237-3333

info@affinityrealestate.com



Affinity Real Estate - 600 Park Avenue South - Park Rapids MN 56470



website: www.AffinityRealEstate.com | email: info@affinityrealestate.com | office: 218-237-3333 | fax: 218-237-3377

Affinity
REAL ESTATE INC

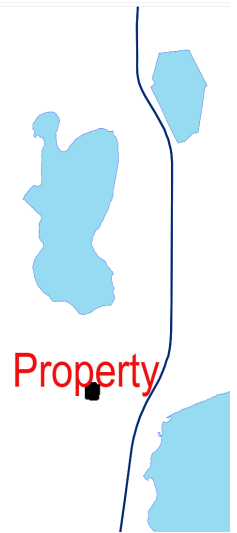
\$45,000
MLS 6714610 Land
6690 108th Street
Laporte MN 56461



website: www.AffinityRealEstate.com | email: info@affinityrealestate.com | office: 218-237-3333 | fax: 218-237-3377



\$45,000
 MLS 6714610 Land
 6690 108th Street
 Laporte MN 56461



website: www.AffinityRealEstate.com | email: info@affinityrealestate.com | office: 218-237-3333 | fax: 218-237-3377



\$45,000
MLS 6714610 Land
6690 108th Street
Laporte MN 56461