



MLS 6714720 Lake Home

\$228,000

595 sq ft
1 bedrooms
1 baths

15827 Wilderness Trail
Crosslake MN 56442

Waterfront: Little Pine Lake
(Crosslake City)

Status: Active

Description:

Rare Opportunity to own turnkey escape with Dock on the Whitefish Chain of Lakes!

This 2020 Skyline Park Model offers the perfect blend of modern comfort and serenity — and it's one of only a handful in the park with a spacious 200 sq. ft. Minnesota Room!

Key Features:

- Private Aluminum Dock – 1 of only 24 in the park approved for a boat lift
- 1 Bedroom + Loft – Sleeps a crowd comfortably!
- Fully Equipped Kitchen – Just bring your toothbrush
- Beautiful Furnishings & Finishes – Turnkey and tastefully done
- Two Electric Fireplaces – Cozy evenings
- Spacious 12x30 Garage w/ Loft – Perfect for your boat and lake toys
- Large Gravel Driveway – Ample parking for vehicles and guests
- Outdoor Living – BBQ grill, patio furniture, shed, and outdoor lighting
- Oversized Shower – Comfort meets style
- Gas Golf Cart – Cruise the park in style

Community Perks:

- Tennis & Pickleball Courts
- Clubhouse & Swimming Pool
- Beautiful Sandy Beach
- Direct Access to the Whitefish Chain – One of Minnesota's most sought after lake destinations!

Whether you're looking for a weekend getaway or your summer sanctuary, this peaceful and beautifully maintained property offers unbeatable value and location. Homes with boat lift access and this level of luxury are rarely available – don't miss your chance!

Contact us today to schedule a private showing – this gem won't last long!



Listed By:
Edina Real Estate Inc.

Garage Stalls
School District
Taxes
Subject to prior sale, change or withdrawal.

Taxes with Assessments \$236

Tax Year 2024



Call Affinity Real Estate

218-237-3333

info@affinityrealestate.com



Affinity Real Estate - 600 Park Avenue South - Park Rapids MN 56470

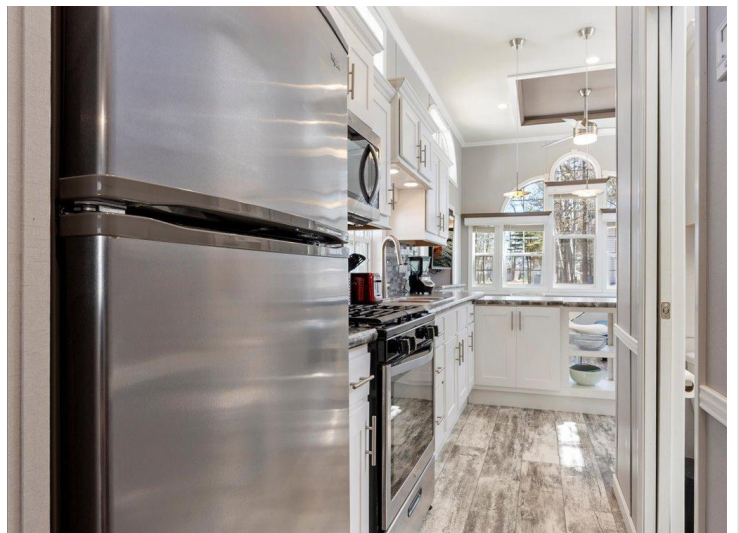
Additional Features:



website: www.AffinityRealEstate.com | email: info@affinityrealestate.com | office: 218-237-3333 | fax: 218-237-3377



\$228,000
 MLS 6714720 Lake Home
 15827 Wilderness Trail
 Crosslake MN 56442



website: www.AffinityRealEstate.com | email: info@affinityrealestate.com | office: 218-237-3333 | fax: 218-237-3377

Affinity
REAL ESTATE INC

\$228,000
MLS 6714720 Lake Home
15827 Wilderness Trail
Crosslake MN 56442



website: www.AffinityRealEstate.com | email: info@affinityrealestate.com | office: 218-237-3333 | fax: 218-237-3377



\$228,000
 MLS 6714720 Lake Home
 15827 Wilderness Trail
 Crosslake MN 56442



website: www.AffinityRealEstate.com | email: info@affinityrealestate.com | office: 218-237-3333 | fax: 218-237-3377



\$228,000
 MLS 6714720 Lake Home
 15827 Wilderness Trail
 Crosslake MN 56442



website: www.AffinityRealEstate.com | email: info@affinityrealestate.com | office: 218-237-3333 | fax: 218-237-3377



\$228,000
MLS 6714720 Lake Home
15827 Wilderness Trail
Crosslake MN 56442



website: www.AffinityRealEstate.com | email: info@affinityrealestate.com | office: 218-237-3333 | fax: 218-237-3377



\$228,000
 MLS 6714720 Lake Home
 15827 Wilderness Trail
 Crosslake MN 56442



website: www.AffinityRealEstate.com | email: info@affinityrealestate.com | office: 218-237-3333 | fax: 218-237-3377



\$228,000
 MLS 6714720 Lake Home
 15827 Wilderness Trail
 Crosslake MN 56442



website: www.AffinityRealEstate.com | email: info@affinityrealestate.com | office: 218-237-3333 | fax: 218-237-3377



\$228,000
MLS 6714720 Lake Home
15827 Wilderness Trail
Crosslake MN 56442