



MLS 6715102 Residential

\$199,900

847 sq ft
2 bedrooms
1 baths

1222 12th Street
Brainerd MN 56401

Status: Pending

Description:

Welcome to this charming two-bedroom, one-bathroom residence featuring an attached one-car garage. Newer roof, water heater and furnace. Step inside to discover a thoughtfully designed, easy-flowing floor plan enhanced by the warmth of hardwood floors and a recently painted inside. Situated on a generous lot, this property boasts a sizable yard, offering ample outdoor space.

Please note that the exterior of the property needs to be painted and will not qualify for RD or FHA financing due to the existing peeling paint. The interior currently does not include a shower; however, there is potential for a buyer to add this.

Additional Details:

Year Built	1954
Lot Acres	0.16
Lot Dimensions	140x50x140x50
Garage Stalls	1
School District	181
Taxes	\$957
Taxes with Assessments	\$982
Tax Year	2025

Additional Features:

Basement: Unfinished **Fuel:** Natural Gas **Garage:** 1 **Heat:** Forced Air **Sewer:** City Sewer/Connected **Water:** City Water/Connected **Air Conditioning:** Central Air

Driving Directions:

E on MN 210 (Washington St) to right onto 6th St, left onto Willow St, left onto 12th St SE, property is on the left.



Listed By:
Positive Realty

Affinity Real Estate Inc. participates in the Regional Multiple Listing Service of Minnesota, Inc Broker Reciprocity (sm) program, allowing us to display other broker's listings on our website. All properties are subject to prior sale, change or withdrawal.



Call Affinity Real Estate

218-237-3333

info@affinityrealestate.com



Affinity Real Estate - 600 Park Avenue South - Park Rapids MN 56470



website: www.AffinityRealEstate.com | email: info@affinityrealestate.com | office: 218-237-3333 | fax: 218-237-3377

Affinity
REAL ESTATE INC

\$199,900
MLS 6715102 Residential
1222 12th Street
Brainerd MN 56401



website: www.AffinityRealEstate.com | email: info@affinityrealestate.com | office: 218-237-3333 | fax: 218-237-3377



\$199,900
MLS 6715102 Residential
1222 12th Street
Brainerd MN 56401



website: www.AffinityRealEstate.com | email: info@affinityrealestate.com | office: 218-237-3333 | fax: 218-237-3377

Affinity
REAL ESTATE INC

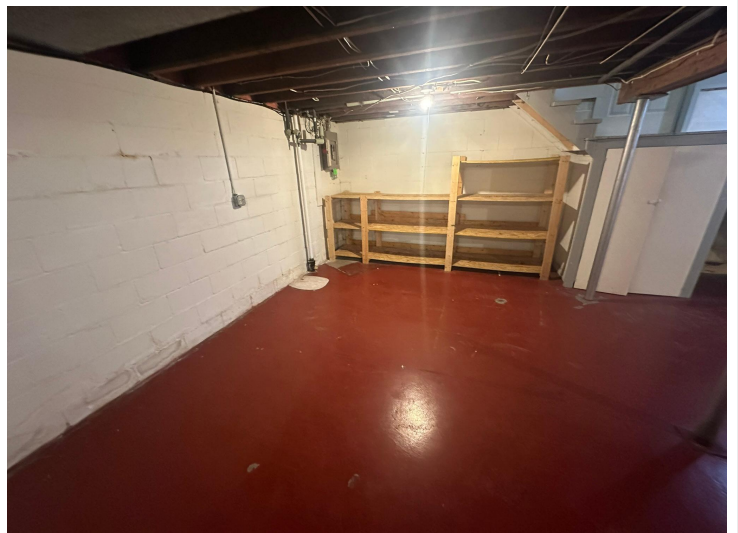
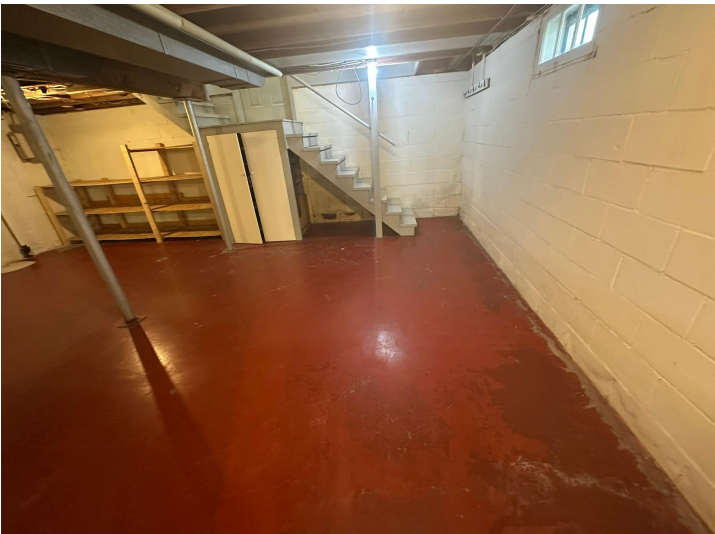
\$199,900
MLS 6715102 Residential
1222 12th Street
Brainerd MN 56401



website: www.AffinityRealEstate.com | email: info@affinityrealestate.com | office: 218-237-3333 | fax: 218-237-3377



\$199,900
 MLS 6715102 Residential
 1222 12th Street
 Brainerd MN 56401



website: www.AffinityRealEstate.com | email: info@affinityrealestate.com | office: 218-237-3333 | fax: 218-237-3377



\$199,900
MLS 6715102 Residential
1222 12th Street
Brainerd MN 56401



website: www.AffinityRealEstate.com | email: info@affinityrealestate.com | office: 218-237-3333 | fax:218-237-3377



\$199,900
MLS 6715102 Residential
1222 12th Street
Brainerd MN 56401