



MLS 6715240 Residential

**\$199,900**

1,080 sq ft  
2 bedrooms  
2 baths

5636 County Road 125  
Longville MN 56655

Status: Pending

**Description:**

A great Starter home, or home to retire at in the Lakes Area without all the high lakeshore taxes. Close to town and clinic. Snowmobile, ATV, and UTV trails close by. 1000's of acres of public land for your use

**Additional Details:**

Year Built	2013
Lot Acres	5
Lot Dimensions	200x400 +-
Garage Stalls	2
School District	118
Taxes	\$850
Taxes with Assessments	\$916
Tax Year	2024

**Additional Features:**

**Basement:** Block **Fuel:** Propane **Garage:** 2 **Heat:** Forced Air **Sewer:** Mound Septic, Tank with Drainage Field **Water:** Submersible - 4 Inch **Air Conditioning:** None

**Driving Directions:**

From Longville go west on HWY 5 about 1/2 mile turn right on 125 go about 1 mile to sign on right



Listed By:  
Rusty's Up North Realty

Affinity Real Estate Inc. participates in the Regional Multiple Listing Service of Minnesota, Inc Broker Reciprocity (sm) program, allowing us to display other broker's listings on our website. All properties are subject to prior sale, change or withdrawal.



**Call Affinity Real Estate**

**218-237-3333**

**info@affinityrealestate.com**



**Affinity Real Estate - 600 Park Avenue South - Park Rapids MN 56470**





website: [www.AffinityRealEstate.com](http://www.AffinityRealEstate.com) | email: [info@affinityrealestate.com](mailto:info@affinityrealestate.com) | office: 218-237-3333 | fax: 218-237-3377



**\$199,900**  
 MLS 6715240 Residential  
 5636 County Road 125  
 Longville MN 56655





website: [www.AffinityRealEstate.com](http://www.AffinityRealEstate.com) | email: [info@affinityrealestate.com](mailto:info@affinityrealestate.com) | office: 218-237-3333 | fax: 218-237-3377



**\$199,900**  
 MLS 6715240 Residential  
 5636 County Road 125  
 Longville MN 56655



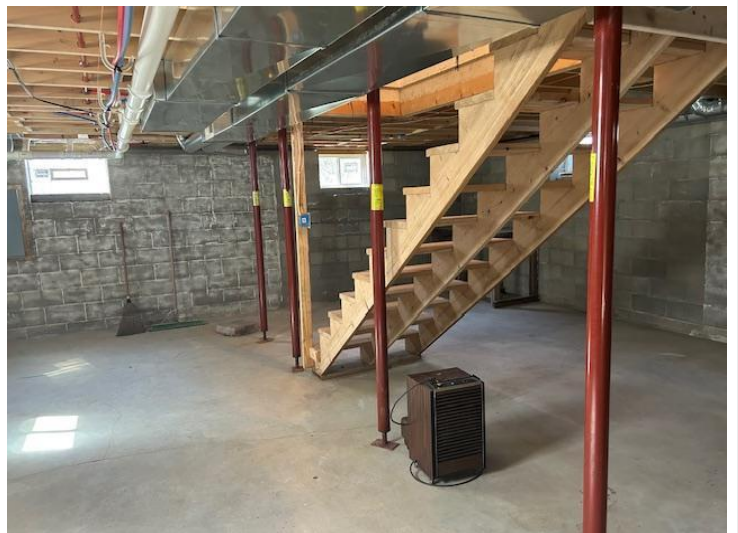
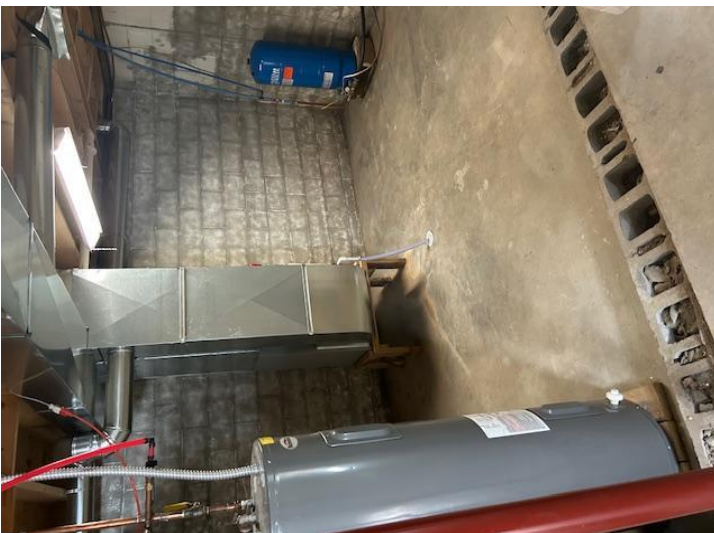
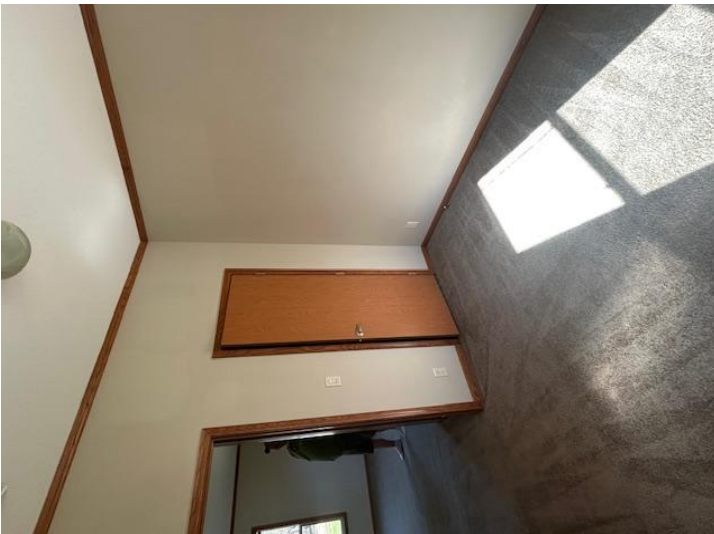


website: [www.AffinityRealEstate.com](http://www.AffinityRealEstate.com) | email: [info@affinityrealestate.com](mailto:info@affinityrealestate.com) | office: 218-237-3333 | fax: 218-237-3377



**\$199,900**  
 MLS 6715240 Residential  
 5636 County Road 125  
 Longville MN 56655





website: [www.AffinityRealEstate.com](http://www.AffinityRealEstate.com) | email: [info@affinityrealestate.com](mailto:info@affinityrealestate.com) | office: 218-237-3333 | fax: 218-237-3377



**\$199,900**  
 MLS 6715240 Residential  
 5636 County Road 125  
 Longville MN 56655

website: [www.AffinityRealEstate.com](http://www.AffinityRealEstate.com) | email: [info@affinityrealestate.com](mailto:info@affinityrealestate.com) | office: 218-237-3333 | fax:218-237-3377



**\$199,900**

MLS 6715240 Residential  
5636 County Road 125  
Longville MN 56655