



MLS 6715292 Residential

\$429,900

2,060 sq ft
3 bedrooms
2 baths

5678 Square Circle
Brainerd MN 56401

Status: Pending

Description:

Welcome to your dream home - nestled on a spacious 2.6 acre lot, this stunning single-level slab home combines modern design with serene country living. Featuring three bedrooms, two full bathrooms, and a three-car garage, this home offers both space and functionality. Inside, you'll find vaulted ceilings in the main living area and 9-foot ceilings throughout the rest of the home, creating an open, airy feel. Each bedroom includes a walk-in closet, providing ample storage. The open-concept layout is perfect for both everyday living and entertaining. With quality craftsmanship and thoughtful details throughout, this home is ready to welcome its first owners.

Additional Details:

Year Built	2025
Lot Acres	2.6
Lot Dimensions	180x627
Garage Stalls	3
School District	181
Taxes	\$256
Taxes with Assessments	\$256
Tax Year	2025

Additional Features:

Fuel: Propane **Heat:** Forced Air

Driving Directions:

From Brainerd go South on Hwy 371, take the exit on Business 371, turn right at the top of the exit, turn left on Sweet road, turn right on Square Circle to home on right.



Listed By:
Weichert REALTORS Tower Properties

Affinity Real Estate Inc. participates in the Regional Multiple Listing Service of Minnesota, Inc Broker Reciprocity (sm) program, allowing us to display other broker's listings on our website. All properties are subject to prior sale, change or withdrawal.



Call Affinity Real Estate

218-237-3333

info@affinityrealestate.com



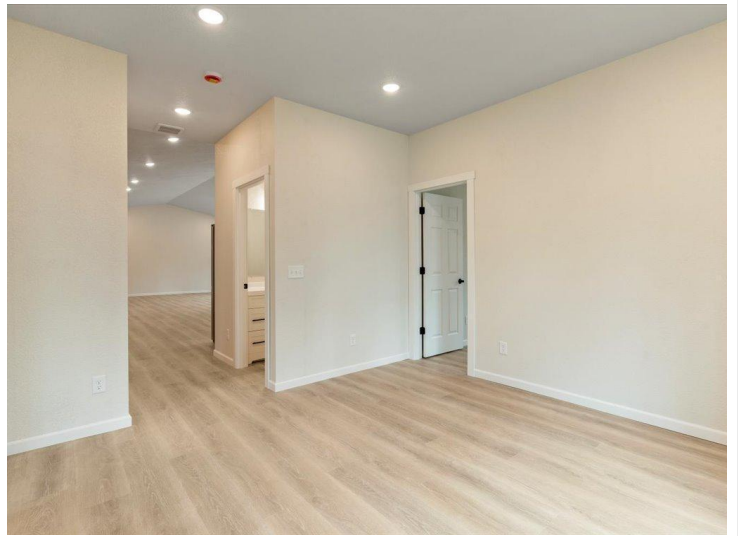
Affinity Real Estate - 600 Park Avenue South - Park Rapids MN 56470



website: www.AffinityRealEstate.com | email: info@affinityrealestate.com | office: 218-237-3333 | fax: 218-237-3377



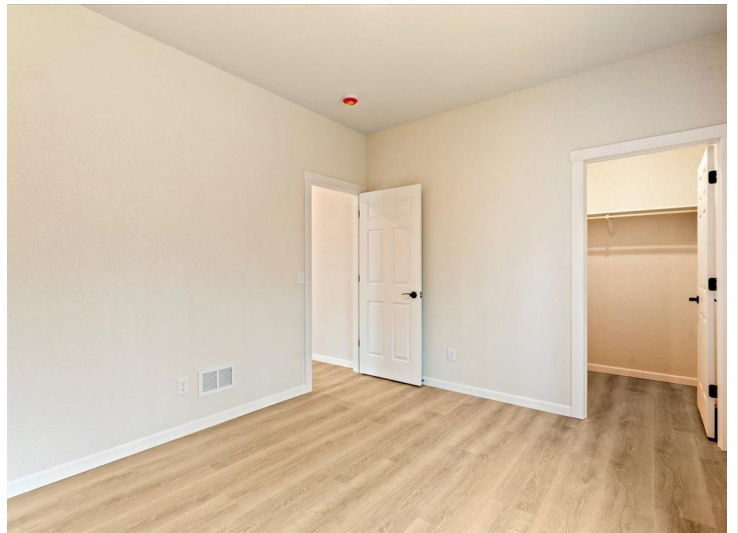
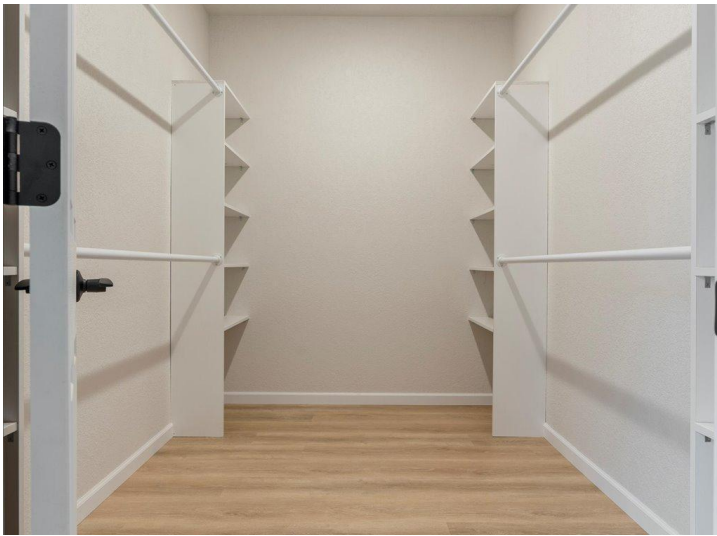
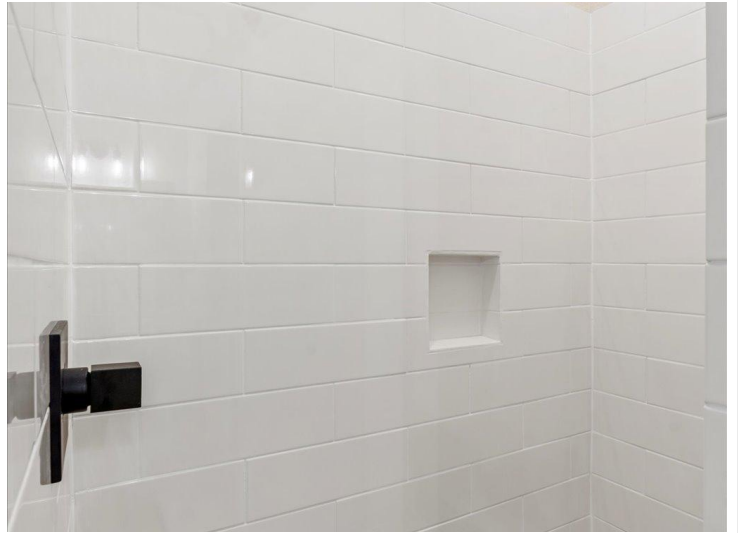
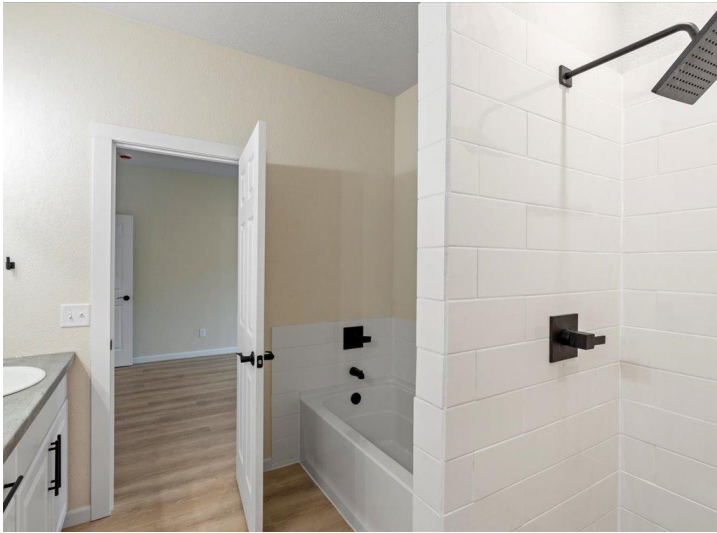
\$429,900
 MLS 6715292 Residential
 5678 Square Circle
 Brainerd MN 56401



website: www.AffinityRealEstate.com | email: info@affinityrealestate.com | office: 218-237-3333 | fax: 218-237-3377



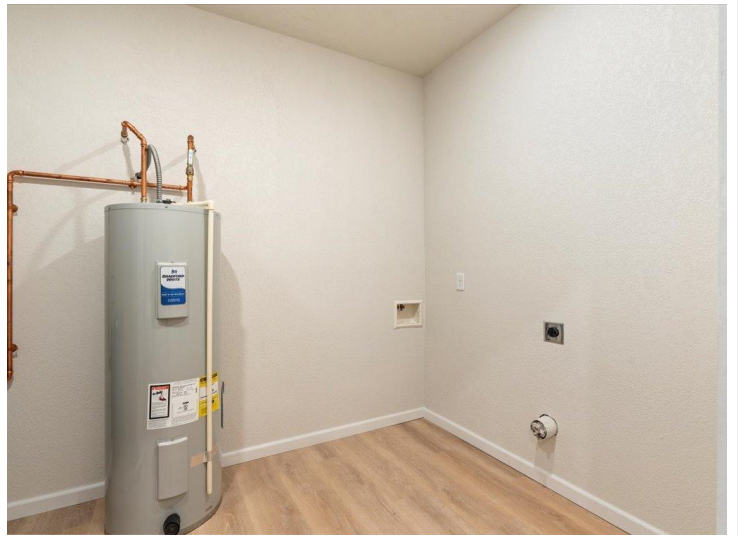
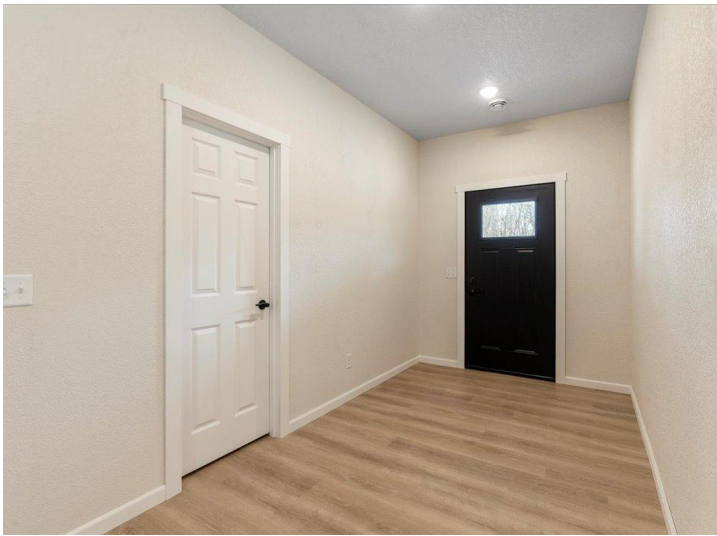
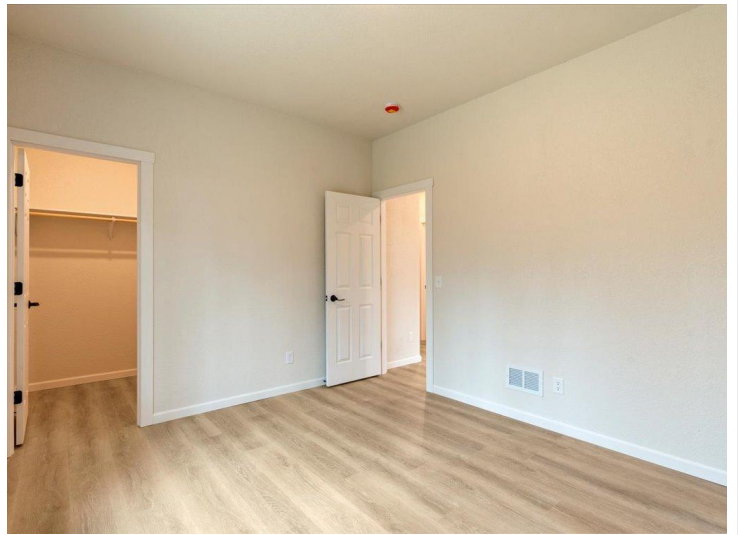
\$429,900
MLS 6715292 Residential
5678 Square Circle
Brainerd MN 56401



website: www.AffinityRealEstate.com | email: info@affinityrealestate.com | office: 218-237-3333 | fax: 218-237-3377



\$429,900
 MLS 6715292 Residential
 5678 Square Circle
 Brainerd MN 56401



website: www.AffinityRealEstate.com | email: info@affinityrealestate.com | office: 218-237-3333 | fax: 218-237-3377



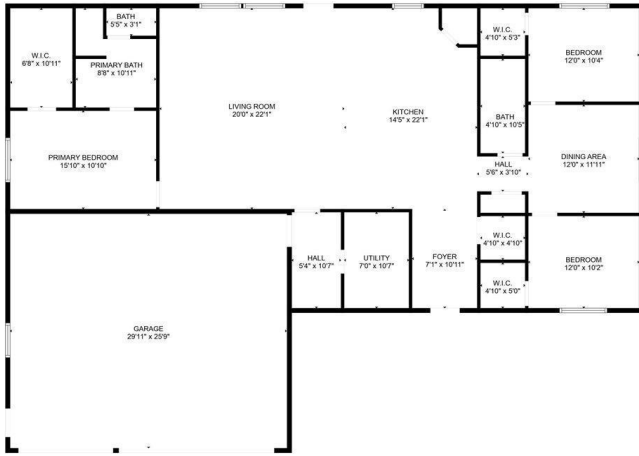
\$429,900
MLS 6715292 Residential
5678 Square Circle
Brainerd MN 56401



website: www.AffinityRealEstate.com | email: info@affinityrealestate.com | office: 218-237-3333 | fax: 218-237-3377



\$429,900
 MLS 6715292 Residential
 5678 Square Circle
 Brainerd MN 56401



FLOOR PLAN CREATED BY CUBICADA APP. MEASUREMENTS DEEMED HIGHLY RELIABLE BUT NOT GUARANTEED.

website: www.AffinityRealEstate.com | email: info@affinityrealestate.com | office: 218-237-3333 | fax: 218-237-3377



\$429,900
 MLS 6715292 Residential
 5678 Square Circle
 Brainerd MN 56401