



MLS 6715311 Residential

**\$234,500**

888 sq ft  
1 bedrooms  
1 baths

787 35th Avenue  
Backus MN 56435

Status: Pending

**Description:**

1+bed/1 bath, wood burning fireplace, detached garage; on 24 acres with established trails, and a second driveway access already in place. This property holds an abundance of possibilities, & SOLD AS IS.

**Additional Details:**

Year Built	1968
Lot Acres	24.8
Lot Dimensions	1315x973x350x350x964x792
Garage Stalls	2
School District	2174
Taxes	\$66
Taxes with Assessments	\$66
Tax Year	2024

**Additional Features:**

**Fuel:** Electric, Wood **Heat:** Baseboard, Fireplace(s)

**Driving Directions:**

Headed North on 371 in Backus. Turn Right onto State 87 and follow for approximately 2miles. Turn right onto 35th Ave. Home is on the right hand side.



Listed By:  
Lyndsay Lane Real Property

Affinity Real Estate Inc. participates in the Regional Multiple Listing Service of Minnesota, Inc Broker Reciprocity (sm) program, allowing us to display other broker's listings on our website. All properties are subject to prior sale, change or withdrawal.



**Call Affinity Real Estate**

**218-237-3333**

**info@affinityrealestate.com**



**Affinity Real Estate - 600 Park Avenue South - Park Rapids MN 56470**



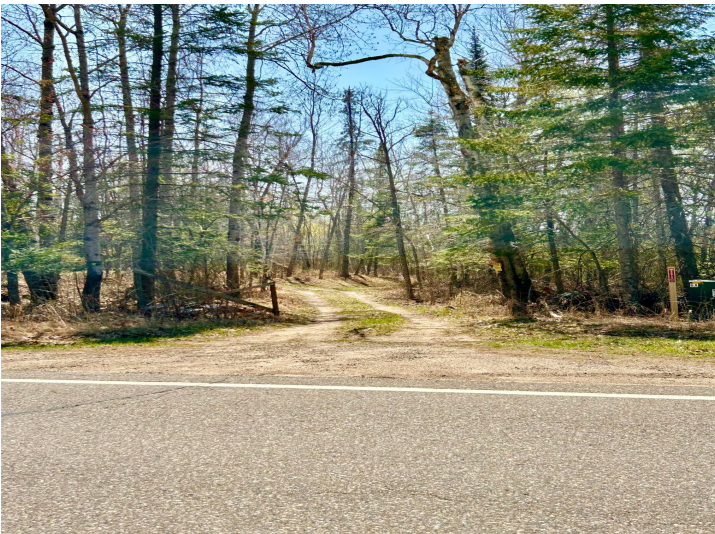


website: [www.AffinityRealEstate.com](http://www.AffinityRealEstate.com) | email: [info@affinityrealestate.com](mailto:info@affinityrealestate.com) | office: 218-237-3333 | fax: 218-237-3377

**Affinity**  
REAL ESTATE INC

**\$234,500**  
MLS 6715311 Residential  
787 35th Avenue  
Backus MN 56435





website: [www.AffinityRealEstate.com](http://www.AffinityRealEstate.com) | email: [info@affinityrealestate.com](mailto:info@affinityrealestate.com) | office: 218-237-3333 | fax: 218-237-3377



**\$234,500**  
MLS 6715311 Residential  
787 35th Avenue  
Backus MN 56435

website: [www.AffinityRealEstate.com](http://www.AffinityRealEstate.com) | email: [info@affinityrealestate.com](mailto:info@affinityrealestate.com) | office: 218-237-3333 | fax:218-237-3377



**\$234,500**  
MLS 6715311 Residential  
787 35th Avenue  
Backus MN 56435



website: [www.AffinityRealEstate.com](http://www.AffinityRealEstate.com) | email: [info@affinityrealestate.com](mailto:info@affinityrealestate.com) | office: 218-237-3333 | fax:218-237-3377



**\$234,500**

MLS 6715311 Residential  
787 35th Avenue  
Backus MN 56435



website: [www.AffinityRealEstate.com](http://www.AffinityRealEstate.com) | email: [info@affinityrealestate.com](mailto:info@affinityrealestate.com) | office: 218-237-3333 | fax:218-237-3377



**\$234,500**

MLS 6715311 Residential  
787 35th Avenue  
Backus MN 56435