



MLS 6715407 Lake Home

\$625,000

2,118 sq ft
3 bedrooms
2 baths

32061 Primrose Lane
Laporte MN 56461

Waterfront: Steamboat

Status: Hold

Description:

Welcome to your lake retreat on beautiful Steamboat Lake—part of the sought-after Leech Lake Chain! This Fully Furnished Home is neat and clean lake PLUS it has approximately 165 feet of private hard bottom shoreline on a level lot, perfect for enjoying year-round views and fantastic fishing right out your door. Conveniently located near Walker, Cass Lake, Laporte, and Bemidji, this property is the ideal Up North getaway or year-round residence.

Steamboat Lake covers approximately 1,744 acres with a maximum depth of about 93 feet, making it ideal for both recreation and fishing.

The lake is connected to Leech Lake via Steamboat Bay and the Steamboat River, allowing boat access to the broader Leech Lake Chain, which spans over 112,000 acres. Steamboat Lake offers the serenity of a quieter, less developed lake while still giving you direct boat access to the massive Leech Lake Chain via Steamboat River—ideal for serious anglers, recreational boaters, and nature lovers alike.

The home features numerous upgrades, including a stunning asphalt driveway and parking pad, a welcoming foyer addition with built-in storage for coats and shoes, and a brand-new kitchen. The kitchen is a true showstopper, complete with warm hickory cabinets, a large center island, updated flooring, and ample storage space—including a reach-in pantry. The adjoining dining room opens to a spacious, oversized deck overlooking the lake, with a heavy-duty patio set included for your enjoyment.

Inside, the main floor offers two bedrooms and a cozy living room with picturesque lake views. The lower level adds even more space with a guest bedroom, full bathroom, and a massive family/recreation room that walks out to an updated lakeside patio—perfect for entertaining or relaxing.

A detached 2-stall garage adds functionality and features finished space above, currently used as a heated bunkhouse. This flexible area is perfect for extra sleeping space, a studio, workshop, or game room. In addition there is a 10x12 garden shed.

Most furnishings are included, making this a turnkey opportunity to own your piece of Northern Minnesota paradise. Swim, fish, and float from your own private lakeshore.



Headwaters Realty Services LLC
This property offers quick access to premier outdoor recreation, including nearby state and national forests for hiking along the scenic Heartland and Superior State Trails, both of which pass through the area and connect to Walker, the Superior National Forest, and the Leech Lake National Forest. The property is also an ATV-friendly area with trails and roads available in surrounding state forests for off-road adventures. For even more exploration, the Leech Lake National Forest is just minutes away, offering hiking, wildlife watching, and year-round outdoor fun.



Call Affinity Real Estate

218-237-3333

info@affinityrealestate.com

utes away, offering

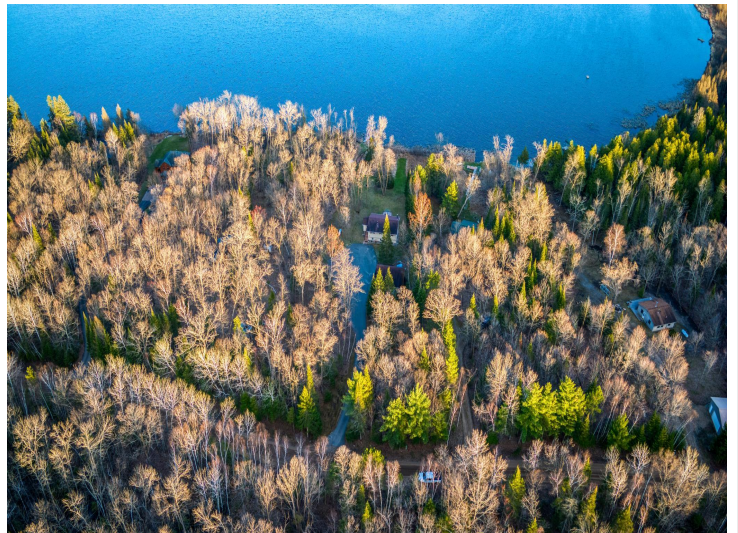
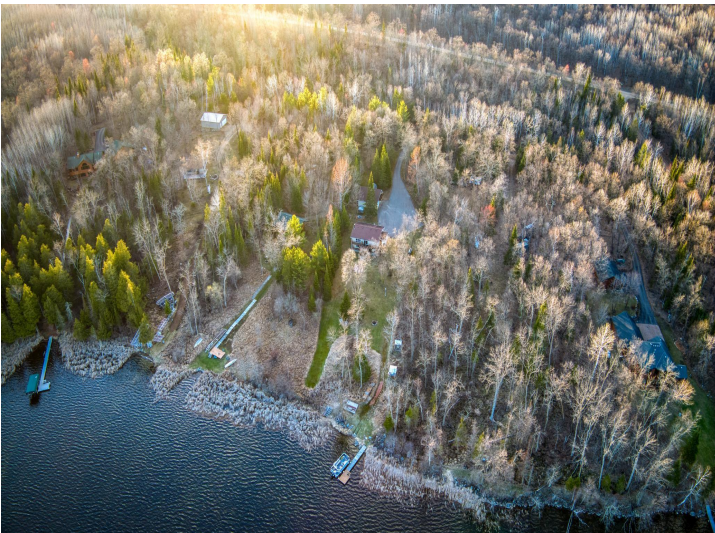
MLS REALTOR® EQUAL OPPORTUNITY

Affinity Real Estate - 600 Park Avenue South - Park Rapids MN 56470

Schedule your private showing today and see all this exceptional lake home has to offer!

Additional Details:

Year Built 1998



website: www.AffinityRealEstate.com | email: info@affinityrealestate.com | office: 218-237-3333 | fax: 218-237-3377



\$625,000
 MLS 6715407 Lake Home
 32061 Primrose Lane
 Laporte MN 56461



website: www.AffinityRealEstate.com | email: info@affinityrealestate.com | office: 218-237-3333 | fax: 218-237-3377



\$625,000
 MLS 6715407 Lake Home
 32061 Primrose Lane
 Laporte MN 56461



website: www.AffinityRealEstate.com | email: info@affinityrealestate.com | office: 218-237-3333 | fax: 218-237-3377

Affinity
REAL ESTATE INC

\$625,000
MLS 6715407 Lake Home
32061 Primrose Lane
Laporte MN 56461



website: www.AffinityRealEstate.com | email: info@affinityrealestate.com | office: 218-237-3333 | fax: 218-237-3377

Affinity
REAL ESTATE INC

\$625,000
MLS 6715407 Lake Home
32061 Primrose Lane
Laporte MN 56461



website: www.AffinityRealEstate.com | email: info@affinityrealestate.com | office: 218-237-3333 | fax: 218-237-3377

Affinity
REAL ESTATE INC

\$625,000
MLS 6715407 Lake Home
32061 Primrose Lane
Laporte MN 56461



website: www.AffinityRealEstate.com | email: info@affinityrealestate.com | office: 218-237-3333 | fax: 218-237-3377

Affinity
REAL ESTATE INC

\$625,000
MLS 6715407 Lake Home
32061 Primrose Lane
Laporte MN 56461



website: www.AffinityRealEstate.com | email: info@affinityrealestate.com | office: 218-237-3333 | fax: 218-237-3377

Affinity
REAL ESTATE INC

\$625,000
MLS 6715407 Lake Home
32061 Primrose Lane
Laporte MN 56461



website: www.AffinityRealEstate.com | email: info@affinityrealestate.com | office: 218-237-3333 | fax: 218-237-3377

Affinity
REAL ESTATE INC

\$625,000
MLS 6715407 Lake Home
32061 Primrose Lane
Laporte MN 56461



website: www.AffinityRealEstate.com | email: info@affinityrealestate.com | office: 218-237-3333 | fax: 218-237-3377

Affinity
REAL ESTATE INC

\$625,000
MLS 6715407 Lake Home
32061 Primrose Lane
Laporte MN 56461



website: www.AffinityRealEstate.com | email: info@affinityrealestate.com | office: 218-237-3333 | fax: 218-237-3377

Affinity
REAL ESTATE INC

\$625,000
MLS 6715407 Lake Home
32061 Primrose Lane
Laporte MN 56461



website: www.AffinityRealEstate.com | email: info@affinityrealestate.com | office: 218-237-3333 | fax: 218-237-3377



\$625,000

MLS 6715407 Lake Home
32061 Primrose Lane
Laporte MN 56461



website: www.AffinityRealEstate.com | email: info@affinityrealestate.com | office: 218-237-3333 | fax: 218-237-3377

Affinity
REAL ESTATE INC

\$625,000
MLS 6715407 Lake Home
32061 Primrose Lane
Laporte MN 56461



website: www.AffinityRealEstate.com | email: info@affinityrealestate.com | office: 218-237-3333 | fax: 218-237-3377

Affinity
REAL ESTATE INC

\$625,000
MLS 6715407 Lake Home
32061 Primrose Lane
Laporte MN 56461



website: www.AffinityRealEstate.com | email: info@affinityrealestate.com | office: 218-237-3333 | fax: 218-237-3377



\$625,000
MLS 6715407 Lake Home
32061 Primrose Lane
Laporte MN 56461



website: www.AffinityRealEstate.com | email: info@affinityrealestate.com | office: 218-237-3333 | fax: 218-237-3377



\$625,000
MLS 6715407 Lake Home
32061 Primrose Lane
Laporte MN 56461



website: www.AffinityRealEstate.com | email: info@affinityrealestate.com | office: 218-237-3333 | fax: 218-237-3377



\$625,000
MLS 6715407 Lake Home
32061 Primrose Lane
Laporte MN 56461



website: www.AffinityRealEstate.com | email: info@affinityrealestate.com | office: 218-237-3333 | fax:218-237-3377



\$625,000
MLS 6715407 Lake Home
32061 Primrose Lane
Laporte MN 56461

website: www.AffinityRealEstate.com | email: info@affinityrealestate.com | office: 218-237-3333 | fax:218-237-3377



\$625,000

MLS 6715407 Lake Home
32061 Primrose Lane
Laporte MN 56461

website: www.AffinityRealEstate.com | email: info@affinityrealestate.com | office: 218-237-3333 | fax:218-237-3377



\$625,000

MLS 6715407 Lake Home
32061 Primrose Lane
Laporte MN 56461