



MLS 6715554 Lake Home

\$499,900

2,770 sq ft
3 bedrooms
3 baths

19319 Elsie Way
Bemidji MN 56601

Waterfront: Long Lake (Liberty
Twp.)

Status: Active

Description:

Come for the Fishing, Stay for the View!

This is your chance to own a beautiful slice of heaven on Long Lake. Enjoy stunning views from every level of the home and the large deck that overlooks the water. With 3 plus bedrooms (lower level no egress), 3 bathrooms, and a walkout basement for easy lake access, there's room for everyone to enjoy.

The property includes two double detached garages, one with a heated bonus room—perfect for a guest space, workshop, or studio. You'll love the 200 feet of hard sand shoreline—ideal for swimming and boating.

Don't miss this rare lakefront opportunity!

Additional Details:

Year Built	2000
Lot Acres	2.06
Lot Dimensions	200 x 445
Garage Stalls	4
School District	31
Taxes	\$4,150
Taxes with Assessments	\$4,150
Tax Year	2025

Additional Features:

Fuel: Electric **Heat:** Baseboard, Forced Air

Driving Directions:

North on Irvine Ave, West on County RD 22, North on County 9 (Cardinal Rd), West on Old Long Lake RD, Left on Elise Way, Property on right fire number 19319



Listed By:
Grimes Realty

Affinity Real Estate Inc. participates in the Regional Multiple Listing Service of Minnesota, Inc Broker Reciprocity (sm) program, allowing us to display other broker's listings on our website. All properties are subject to prior sale, change or withdrawal.



Call Affinity Real Estate

218-237-3333

info@affinityrealestate.com



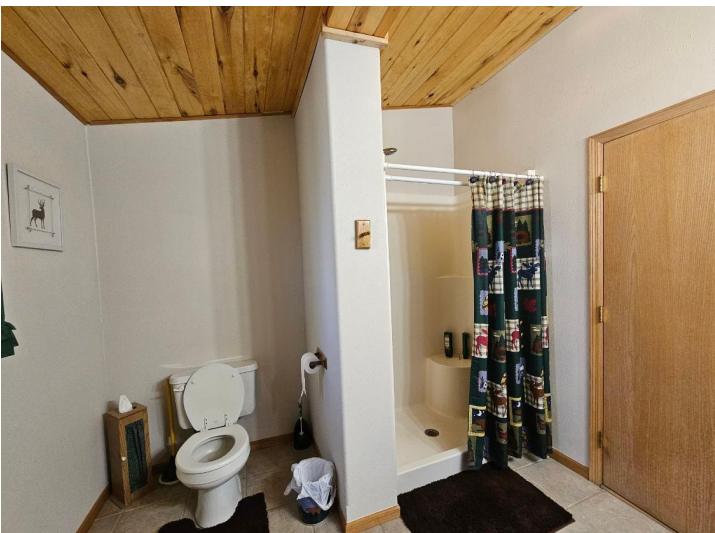
Affinity Real Estate - 600 Park Avenue South - Park Rapids MN 56470



website: www.AffinityRealEstate.com | email: info@affinityrealestate.com | office: 218-237-3333 | fax: 218-237-3377

Affinity
REAL ESTATE INC

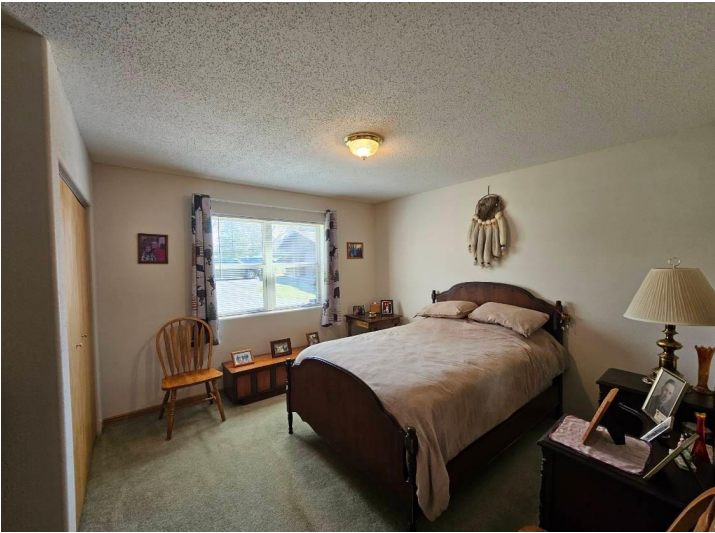
\$499,900
MLS 6715554 Lake Home
19319 Elsie Way
Bemidji MN 56601



website: www.AffinityRealEstate.com | email: info@affinityrealestate.com | office: 218-237-3333 | fax: 218-237-3377

Affinity
REAL ESTATE INC

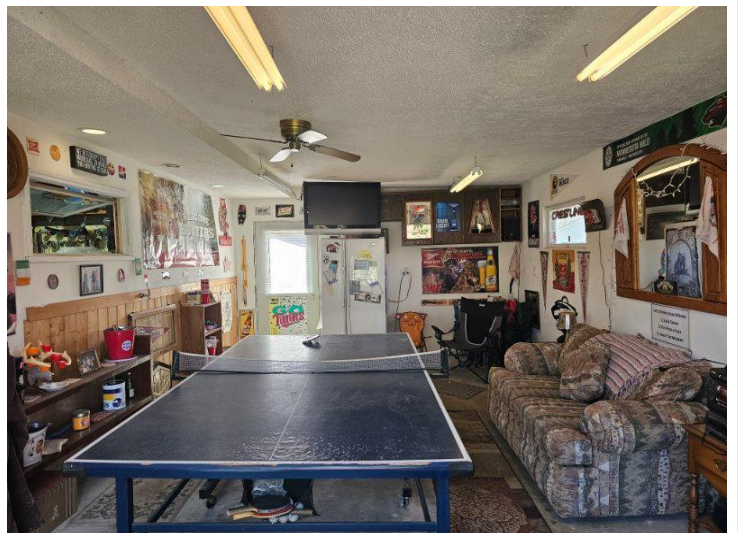
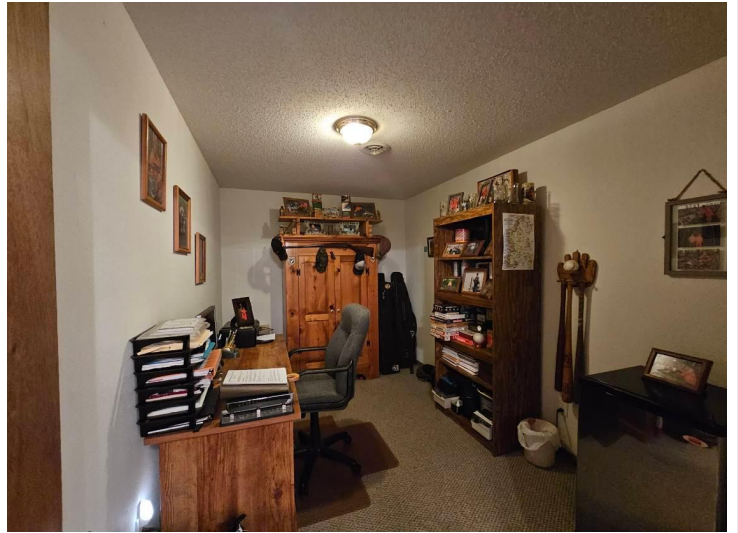
\$499,900
MLS 6715554 Lake Home
19319 Elsie Way
Bemidji MN 56601



website: www.AffinityRealEstate.com | email: info@affinityrealestate.com | office: 218-237-3333 | fax: 218-237-3377

Affinity
REAL ESTATE INC

\$499,900
MLS 6715554 Lake Home
19319 Elsie Way
Bemidji MN 56601



website: www.AffinityRealEstate.com | email: info@affinityrealestate.com | office: 218-237-3333 | fax: 218-237-3377

Affinity
REAL ESTATE INC

\$499,900
MLS 6715554 Lake Home
19319 Elsie Way
Bemidji MN 56601



website: www.AffinityRealEstate.com | email: info@affinityrealestate.com | office: 218-237-3333 | fax: 218-237-3377

Affinity
REAL ESTATE INC

\$499,900
MLS 6715554 Lake Home
19319 Elsie Way
Bemidji MN 56601