



MLS 6716768 Lake Home

\$538,500

1,904 sq ft
3 bedrooms
2 baths

715 Lake Shore Drive
Bemidji MN 56601

Waterfront: Bemidji (main lake)

Status: Hold

Description:

Welcome to Bemidji's premier lake side condominiums on the south shore of Lake Bemidji and welcome to this fabulous 3 bedroom lake side home that could be yours! This floor plan, 'The North Star', offers 3 bedrooms 2 baths and a roomy 1904 sf. with storage everywhere. 110 is located on the first floor with lake view from the great room and EVERY bedroom. Beside the climate controlled secure indoor parking, two elevators, lake side patio, triple pane windows, soundproof insulation, and private balconies each residence sports quartz countertops and Onyx Showers systems. Living at the Bixby provides an ultra convenient lifestyle with no mowing of lawn, trimming of trees or plowing of snow. The association fee also includes natural gas, water, sewer and refuse. Schedule a tour today and see how easy life can be!

Additional Details:

Year Built	2022
Lot Dimensions	348x228
Garage Stalls	1
School District	31
Taxes	\$5,658
Taxes with Assessments	\$5,658
Tax Year	2025

Additional Features:

Basement: None **Fuel:** Electric **Garage:** 1 **Heat:** Heat Pump **Sewer:** City Sewer/Connected **Water:** City Water/Connected **Air Conditioning:** Central Air

Driving Directions:

East on 1st Street to Central Ave SE, Left to Lakeshore Drive



Listed By:
Lake-N-Woods Realty

Affinity Real Estate Inc. participates in the Regional Multiple Listing Service of Minnesota, Inc Broker Reciprocity (sm) program, allowing us to display other broker's listings on our website. All properties are subject to prior sale, change or withdrawal.



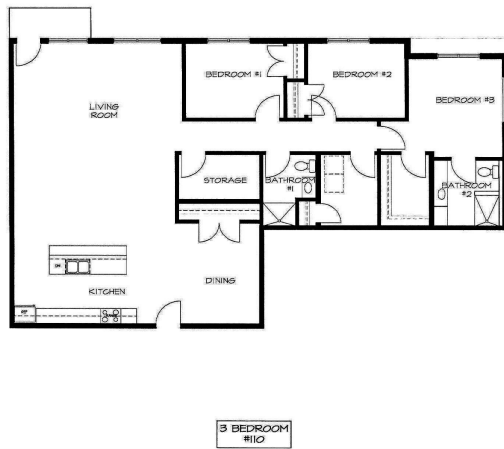
Call Affinity Real Estate

218-237-3333

info@affinityrealestate.com



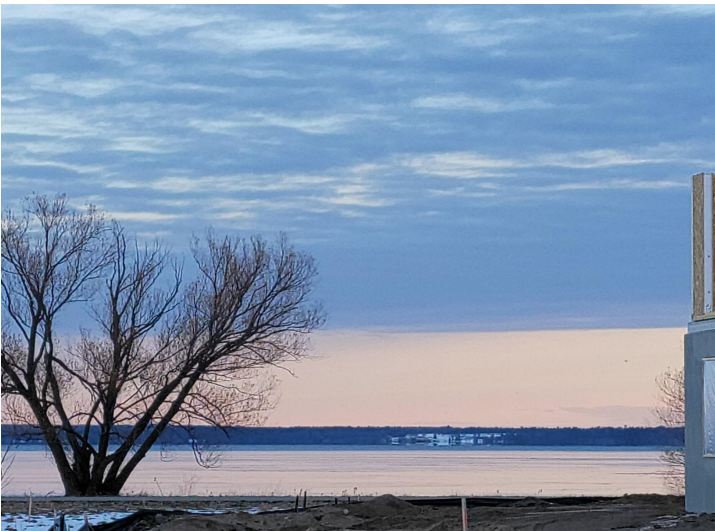
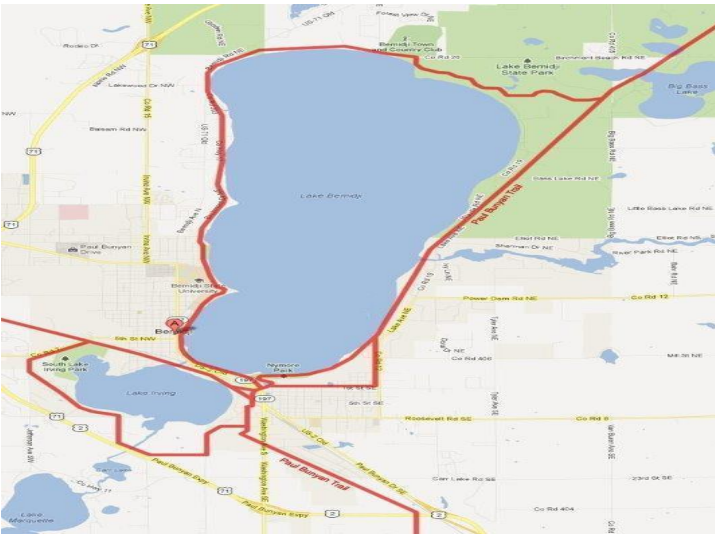
Affinity Real Estate - 600 Park Avenue South - Park Rapids MN 56470



website: www.AffinityRealEstate.com | email: info@affinityrealestate.com | office: 218-237-3333 | fax: 218-237-3377



\$538,500
 MLS 6716768 Lake Home
 715 Lake Shore Drive
 Bemidji MN 56601



website: www.AffinityRealEstate.com | email: info@affinityrealestate.com | office: 218-237-3333 | fax: 218-237-3377

Affinity
REAL ESTATE INC

\$538,500
MLS 6716768 Lake Home
715 Lake Shore Drive
Bemidji MN 56601



website: www.AffinityRealEstate.com | email: info@affinityrealestate.com | office: 218-237-3333 | fax: 218-237-3377



\$538,500
 MLS 6716768 Lake Home
 715 Lake Shore Drive
 Bemidji MN 56601