



MLS 6716874 Residential

\$699,900

3,277 sq ft
5 bedrooms
3 baths

30850 Firewatch Way
Pequot Lakes MN 56472

Status: Active

Description:

To be built. Foundation/slab has been poured and construction starts May 2025. The foundation has been poured for this new construction home. 5 bedroom 3 bathrooms with in-floor heat throughout the home and garage. Also offers natural gas forced air and central air.

This is a prime lot surrounded by trees and wildlife at the end of the cul-de-sac. This is the Aspen model, and the attached photos are of the first Aspen in the development that has sold. This gorgeous two-story home is designed for flow and functionality with the open concept, 9-foot ceilings, butler's pantry, main floor primary ensuite, and gorgeous finishes. This development offers a mountain modern design; a natural blend of rustic, nature-inspired elements with clean lines, minimalist yet luxury features. Prime location nestled between Pequot Lakes and Breezy Point. Contact agent for further questions. Modifications open for discussion.

Additional Details:

Year Built	2025
Lot Acres	1
Lot Dimensions	330x137x190x120
Garage Stalls	3
School District	186
Taxes	\$66
Taxes with Assessments	\$66
Tax Year	2024

Additional Features:

Fuel: Natural Gas **Heat:** Forced Air, Fireplace(s), Radiant Floor

Driving Directions:

From Pequot Lakes head east on County Road 11 to the new development on your right. Turn right on Firewatch Way to the end of the cul-de-sac and #30850



Listed By:
Northland Sotheby's International Realty

Affinity Real Estate Inc. participates in the Regional Multiple Listing Service of Minnesota, Inc Broker Reciprocity (sm) program, allowing us to display other broker's listings on our website. All properties are subject to prior sale, change or withdrawal.



Call Affinity Real Estate

218-237-3333

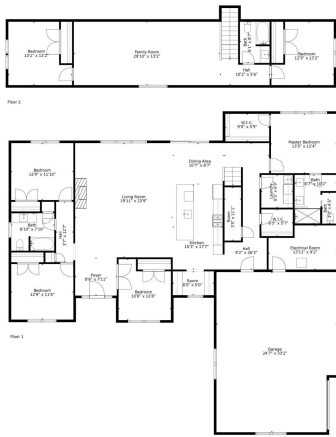
info@affinityrealestate.com



Affinity Real Estate - 600 Park Avenue South - Park Rapids MN 56470



TOTAL: 2997 sq. ft.
FLOOR 1: 2111 sq. ft., FLOOR 2: 886 sq. ft.
EXCLUDED AREAS: GARAGE: 792 sq. ft., ELECTRICAL ROOM: 114 sq. ft.
Floor Plan Created By: Caliente App. Measurements Deemed Highly Reliable But Not Guaranteed.



TOTAL: 2997 sq. ft.
FLOOR 1: 2111 sq. ft., FLOOR 2: 886 sq. ft.
EXCLUDED AREAS: GARAGE: 792 sq. ft., ELECTRICAL ROOM: 114 sq. ft.
Floor Plan Created By: Caliente App. Measurements Deemed Highly Reliable But Not Guaranteed.



website: www.AffinityRealEstate.com | email: info@affinityrealestate.com | office: 218-237-3333 | fax: 218-237-3377

Affinity
REAL ESTATE INC

\$699,900
MLS 6716874 Residential
30850 Firewatch Way
Pequot Lakes MN 56472



website: www.AffinityRealEstate.com | email: info@affinityrealestate.com | office: 218-237-3333 | fax: 218-237-3377



\$699,900
MLS 6716874 Residential
30850 Firewatch Way
Pequot Lakes MN 56472



website: www.AffinityRealEstate.com | email: info@affinityrealestate.com | office: 218-237-3333 | fax: 218-237-3377



\$699,900
MLS 6716874 Residential
30850 Firewatch Way
Pequot Lakes MN 56472



website: www.AffinityRealEstate.com | email: info@affinityrealestate.com | office: 218-237-3333 | fax: 218-237-3377

Affinity
REAL ESTATE INC

\$699,900
MLS 6716874 Residential
30850 Firewatch Way
Pequot Lakes MN 56472



website: www.AffinityRealEstate.com | email: info@affinityrealestate.com | office: 218-237-3333 | fax: 218-237-3377



\$699,900
MLS 6716874 Residential
30850 Firewatch Way
Pequot Lakes MN 56472



website: www.AffinityRealEstate.com | email: info@affinityrealestate.com | office: 218-237-3333 | fax: 218-237-3377



\$699,900
MLS 6716874 Residential
30850 Firewatch Way
Pequot Lakes MN 56472