



MLS 6717116 Land

\$129,900

18.54 Acres
Subdivided

148XX Co Hwy 30 [C]
Pelican Rapids MN 56572

Status: Active

Description:

Discover 18.54 Acres of Prime Oak-Wooded Hunting Land Just Minutes from Pelican Rapids! Tucked into a Mature Oak Forest, this 18.54-Acre Parcel delivers Exceptional Hunting Opportunities amid Rolling Terrain and a Secluded Pond that draws Deer, Turkey, and Small Game year-round. With No Covenants or Building Restrictions, you have complete Freedom to construct a Rustic Hunting Cabin, a Custom Dream Home, or simply enjoy the Land as your Private Wilderness Escape. Just a Five-Minute Drive from Pelican Rapids, the Property offers Rare Convenience without sacrificing Seclusion. Whether you're a Dedicated Hunter or simply seeking a Peaceful Retreat in Nature, this Land offers a Flexible and Inspiring Setting to make your Vision a Reality. Opportunities like this—where Hunting, Privacy, and Location align—don't come along often. Come walk the Land and see its Potential for yourself.

Additional Details:

Lot Acres	18.54
Lot Dimensions	610 x 1321
School District	548
Taxes	\$908
Taxes with Assessments	\$908
Tax Year	2024

Additional Features:

Driving Directions:

From Pelican Rapids travel 4 miles west on HWY 108. Turn right on HWY 30. Travel 1/4 mile. Property on left.



Listed By:
Jack Chivers Realty

Affinity Real Estate Inc. participates in the Regional Multiple Listing Service of Minnesota, Inc Broker Reciprocity (sm) program, allowing us to display other broker's listings on our website. All properties are subject to prior sale, change or withdrawal.



Call Affinity Real Estate

218-237-3333

info@affinityrealestate.com



Affinity Real Estate - 600 Park Avenue South - Park Rapids MN 56470



website: www.AffinityRealEstate.com | email: info@affinityrealestate.com | office: 218-237-3333 | fax: 218-237-3377



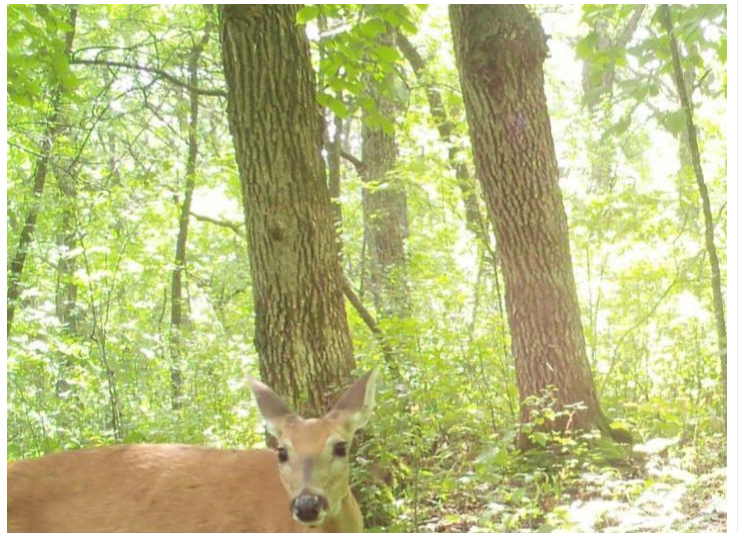
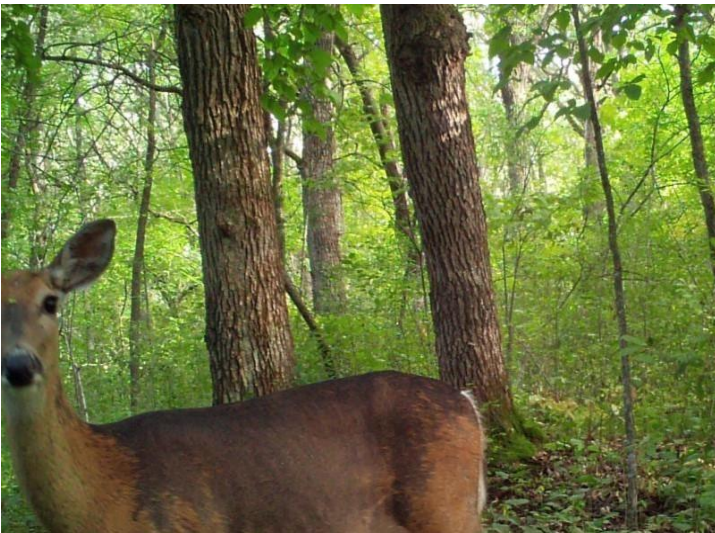
\$129,900
MLS 6717116 Land
148XX Co Hwy 30 [C]
Pelican Rapids MN 56572



website: www.AffinityRealEstate.com | email: info@affinityrealestate.com | office: 218-237-3333 | fax: 218-237-3377



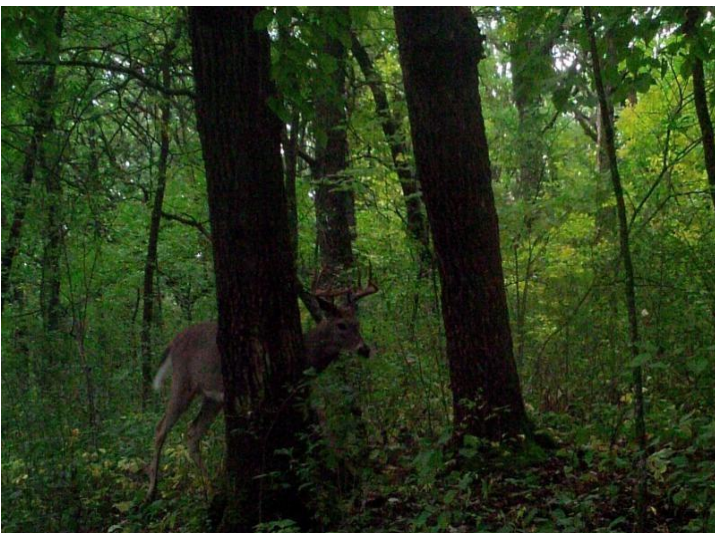
\$129,900
MLS 6717116 Land
148XX Co Hwy 30 [C]
Pelican Rapids MN 56572



website: www.AffinityRealEstate.com | email: info@affinityrealestate.com | office: 218-237-3333 | fax: 218-237-3377



\$129,900
MLS 6717116 Land
148XX Co Hwy 30 [C]
Pelican Rapids MN 56572



website: www.AffinityRealEstate.com | email: info@affinityrealestate.com | office: 218-237-3333 | fax: 218-237-3377



\$129,900
MLS 6717116 Land
148XX Co Hwy 30 [C]
Pelican Rapids MN 56572



website: www.AffinityRealEstate.com | email: info@affinityrealestate.com | office: 218-237-3333 | fax: 218-237-3377



\$129,900
MLS 6717116 Land
148XX Co Hwy 30 [C]
Pelican Rapids MN 56572